

OLIVER TAMBO RECREATION GROUND (formerly Albert Road)



Section	Heading	Page
	Contents	
	Foreword	4
	Open Space Vision in Haringey	5
	Purpose of the management plan	6
1.0	Setting the Scene	
1.1	Haringey in a nutshell	7
1.2	The demographics of Haringey	7
1.3	Open space provision in Haringey	8
2.0	About Oliver Tambo Recreation Ground	
2.1	Site location and description	9
2.2	Facilities	9
2.3	Trees	12
3.0	A welcoming place	
3.1	Visiting Oliver Tambo Recreation Ground	14
3.2	Entrances	15
3.3	Access for all	16
3.4	Signage	16
3.5	Toilet facilities and refreshments	17
3.6	Events	17
4.0	A clean and well-maintained park	
4.1	Operational and management responsibility for parks	19
4.2	Current maintenance by Parks Operations	20
4.3	Asset management and project management	21
4.4	Scheduled maintenance	23
4.5	Setting and measuring service standards	26
4.6	Monitoring the condition of equipment and physical assets	28
4.7	Tree maintenance programme	29
4.8	Graffiti	29
4.9	Maintenance of buildings, equipment and landscape	29
4.10	Hygiene	29
5.0	Healthy, safe and secure place to visit	
5.1	Smoking	31
5.2	Alcohol	31
5.3	Walking	31
5.4	Health and safety	32
5.5	Reporting issues with the 'Our Haringey' app	33
5.6	Community safety and policing	33
5.7	Extending Neighbourhood Watch into parks	34
5.8	Designing out crime	34
5.9	24 hour access	35
5.10	Dogs and dog control orders	35
6.0	Sustainability	
6.1	Greenest borough strategy	37
6.2	Pesticide use	37
6.3	Sustainable use of materials	38
6.4	Recycling	38
6.5	Pollution reduction	38
6.6	Water efficiency	38

Section	Heading	Page
7.0	Community involvement	
7.1	Volunteering in parks	40
7.2	Haringey Friends of Parks Forum	40
7.3	Friends of Oliver Tambo Recreation Ground	41
7.4	Other community involvement	42
8.0	Conservation and heritage	
8.1	Biodiversity and the Biodiversity Action Plan	46
8.2	Habitat representation and nature conservation interests	46
8.3	Designation status	46
8.4	Conservation Action Plan	47
8.5	Site history and heritage	52
9.0	Marketing and communications	
9.1	The marketing approach	56
9.2	Websites	56
9.3	Social media	56
9.4	Publications	57
9.5	Noticeboards	57
9.6	Campaigns	57
9.7	Awards	58
9.8	Tree and bench sponsorship	58
9.9	Consultation and market research	58
10	Management of the park	
10.1	Setting the financial scene	60
10.2	Management structure	61
10.3	Borough Plan 2019-2023	62
10.4	Parks and Open Spaces Strategy	62
10.5	The Greenest Borough Strategy	63
10.6	The Health & Wellbeing Strategy	63
10.7	Finance and funding	63
11	Improving Oliver Tambo Recreation Ground	65
12	Action Plan	
	Action Plan 2020	68

Foreword

Dear residents and park users,

I am pleased to share with you the management plan for Oliver Tambo Recreation Ground. This plan has been developed by Haringey Council, in partnership with the Friends of Oliver Tambo Recreation Ground, stakeholders in and around the park and with input from your local ward councillors.

Residents have told us that our parks and green spaces are one of the things they love the most about Haringey, and as a council, we agree. We are proud of our green spaces and are committed to doing all we can to make our parks the very best they can be.

Most of Haringey's district and local parks have been nationally recognised through the Green Flag Award scheme, and we continue to work with Friends groups to maintain and improve our parks for our community and visitors alike. In a recent resident survey 80% of people told us they were satisfied with parks and greenspaces in the borough.

It is no secret that Haringey – like all local authorities – has been affected by austerity, but we continue to work hard to fund and maintain our parks, as well as bringing in external investment to provide a much-needed boost.

Green spaces in Haringey play so many different roles - from a retreat from the busy city, or a place for sport and play, to sites for nature conservation and world-renowned events. Each management plan seeks to balance the many competing demands for each park to allow our community to enjoy the park their way.

This management plan looks to show how the council is meeting and addressing the criteria of the Green Flag Award scheme and sets out the priorities for action and improvement of the park over the coming years.

I hope you find this document useful and I would encourage you to make the most of your local park. If you want to get more involved in the future management of the park why not consider joining a Friends group, attending an event or simply just send us some of your thoughts?

Thank you,




Cllr Kirsten Hearn
Cabinet Member for Climate Change and Sustainability

Cabinet Member for Climate Change, Equalities & Leisure

Open space vision in Haringey

Our draft vision is that Haringey's parks and green spaces will be places where:

- Residents' lives are being improved by access to quality green space
- Communities take an active role in the decisions about the future of parks and green spaces
- Civic pride and community ownership of parks are encouraged, through a diverse range of volunteering opportunities
- A diverse range of events is offered, providing a backdrop for communities to celebrate together and enhance the borough's cultural offer
- Wildlife flourishes and habitats are maintained, expanded and connected.
- Spaces are protected and future proofed for the next generation
- Funding for parks is sustainable and sufficient to deliver the agreed service standards
- Full advantage is taken of the health and wellbeing benefits

The Parks and Green Spaces Strategy is in development and will be subject to consultation with a range of partners and stakeholders before the Council is asked to formally adopt it in 2022. More details are set out in sections 10.4 and 10.5

Purpose of the Management Plan

This management plan details and guides the management, maintenance, development and improvement of Oliver Tambo Recreation Ground.

In developing this management plan, we particularly want to stress the importance we place on our commitment to involve the whole community in shaping the future of Oliver Tambo Recreation Ground. This is because we recognise that open space affects the lives of almost everyone who lives and works nearby. We believe that the combination of effective management and community involvement of all our open spaces offers considerable potential for helping to make Haringey a thriving and more cohesive community.

This management plan should be treated as a living and evolving document. It is open to review and adaption in an ever-changing environment.

This document is the primary location where all those with a connection to Oliver Tambo Recreation Ground - council staff and members, Friends and community groups, partners and residents - should be confident that everything about Oliver Tambo Recreation Ground can be found and is set out here.

It also tells a little of the history of the park, how it is today and details future plans and aspirations and how these are to be achieved.

1. Setting the scene

1.1 Haringey in a nutshell

Haringey is one of 33 London boroughs, and is located to the north of the capital covering 11 square miles (28km²) in total. The borough population in 2020 is estimated to be 289,000 which is 15% more than ten years ago.



Fig 1

Overall Haringey is the seventh most deprived borough in London (out of 32). However, the borough has extreme contrasts. Areas such as the high hilly communities of Highgate, Muswell Hill and Crouch End in the west are some of the most prosperous locations to live in London, while some wards in the east are classified as being amongst the more deprived in the country.

1.2 The demographics of Haringey

The population is very diverse and very youthful. Around a quarter of the borough population is aged 0-19 and only a tenth of residents are over 65. Nearly two fifths of the borough population are from black, Asian or minority ethnic (BAME) groups and 26% identify as “white other”.

Oliver Tambo Recreation Ground is in Alexandra ward. The population density in Alexandra ward is 4,920 residents per km² (This is the lowest in Haringey and compares to an average of 10,264 in Haringey and 8,697 in London).

The Haringey website has detailed information about the population of the borough and individual wards within the borough. This can be found at <http://www.haringey.gov.uk/local-democracy/about-council/state-of-the-borough>

1.3 Open space provision in Haringey

Haringey Council manages most of the public open space within the borough, except for Alexandra Park, Highgate Woods and Tottenham Marshes.

Although much greener than some other London boroughs, Haringey is deficient in all types of open space, including public parks. This fact underlines the importance of improving and maintaining sites like Oliver Tambo Recreation Ground to enable more intense and diverse use.

In 2014, 52.2% of Alexandra ward (in which Oliver Tambo Recreation Ground is located) was described as open space. This is above the average open space across Haringey (27.8%) and London (39%).

Furthermore, 30.3% of the land area of Alexandra ward is **public** open space compared to nearly 17% across the whole of Haringey and nearly 19% across London. This highlights that the west of Haringey has more open space and publicly open space than the east of Haringey.

2. About Oliver Tambo Recreation Ground

2.1 Site location and description

The site formerly known as Albert Road Recreation Ground was formally renamed O.R. Tambo Recreation Ground in February 2021 in recognition of the importance of Oliver Tambo, who lived locally to the site, and his work to fight apartheid in South Africa and racism globally.

Oliver Tambo Recreation Ground is a 6.62ha park in Alexandra Ward. The site is designated Metropolitan Open Land (MOL) and is also a Site of Importance for Nature Conservation (SINC).

It lies in the parliamentary constituency of Hornsey and Wood Green and abuts Muswell Hill Golf Course with Alexandra Park to the south.

The park's perimeter along Albert Road and Durnsford Road is fenced with iron railings, coupled with beech hedges. The boundary with Bidwell Gardens to the north is marked solely by iron railings. Alexandra Park School and Rhodes Avenue Primary School borders the west. A spinney lies to the west of the Rec and is used by Rhodes Avenue Primary School as a 'forest garden'. This area is also a designated SINC. The Sunshine Garden Centre provides a boundary to the east.

In 2010 the site was awarded Beacon status from the Tennis Foundation in recognition of its high quality, affordable community tennis programmes.

The Park first won its Green Flag in 2006 and has retained it each year since. A Safer Park gold award was awarded by the Mayor of London in 2011 and 2012 and became a Queen Elizabeth II designated park at the end of 2011 gaining protection in perpetuity.

An Oliver Tambo memorial was erected at the site in 2007 however more recently a life-size, life-like statue was erected in 2019 to celebrate what would have been his 102nd birthday and 25 years of freedom in South Africa.

The grid reference of the park is 529250,190750.

2.2 Facilities

For a relatively small park the site contains a wide range of facilities. The eastern section of the park - adjacent to the garden centre - holds the playground, tennis courts, basketball courts, the old bowling green and pavilion and the Pavilion Café. Between these amenities and Albert and Durnsford Roads are three football pitches, see Figure 2 below.

The presence of the café has led to a change in usage of the site and its facilities. The tennis courts are now heavily used as a result of the coaching offered by Pavilion Tennis and the recent improvements to the courts.

The football pitches have seen their popularity grow in recent years with matches being played on a daily basis. Pavilion Tennis and the café have had a positive effect on user numbers.

During weekday term times, Alexandra Park School uses the western field for sports activities. Rhodes Avenue School uses the park for sports days and PE lessons. School children use the park informally at lunch times and as a thoroughfare to and from the school. Parents use the park as a meeting place to socialise, and children make extensive use of the under 12s play facilities. Bounds Green School and St Martins School also use Oliver Tambo Recreation Ground for their Sports Days.

For more passive informal recreational purposes there are benches and informal amenity areas throughout the park.

The site also features a trim trail and a nature conversation area (SINC) with a pond.

In 2019 the Council was approached by interested parties connected to Priory Park with a request for permission to install a fully funded a petanque 'terrain' at Priory Park. As there was an existing petanque terrain at Oliver Tambo Recreation Ground we put the interested parties in touch with the Friends of Oliver Tambo Recreation Ground, the benefit for Oliver Tambo Recreation Ground being that this site's underused and deteriorating petanque facility was given a make-over and is now in regular use.

Albert Road Rec: Key features

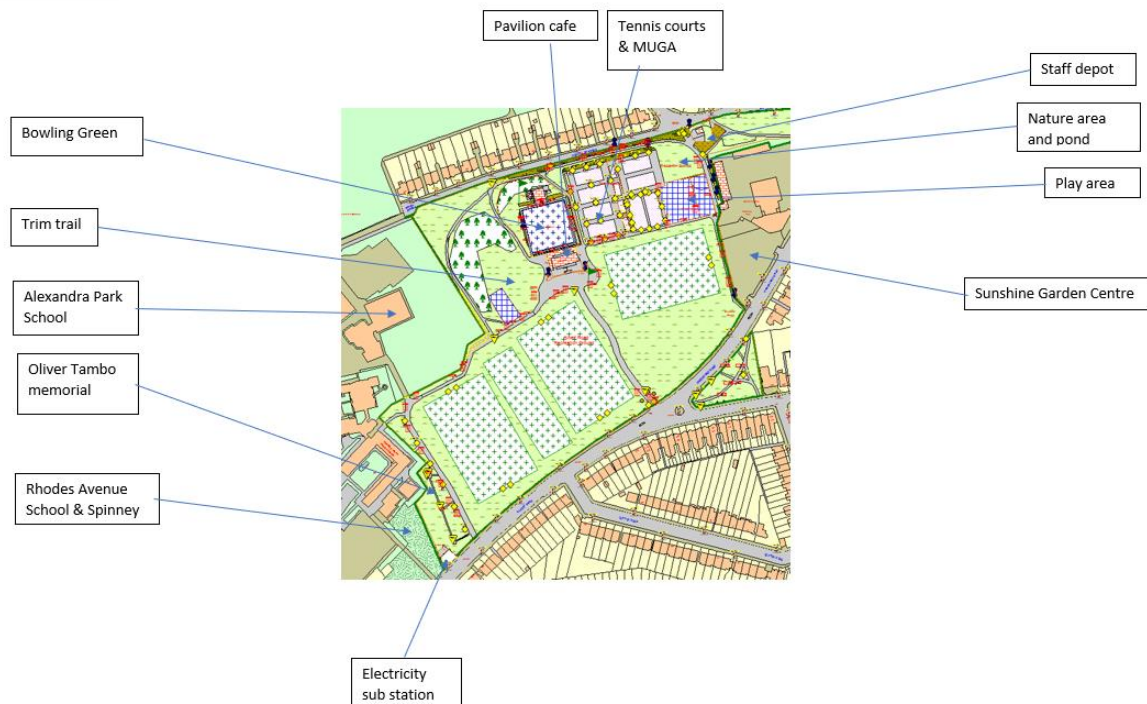


Fig 2: Oliver Tambo Recreation Ground: Site Plan

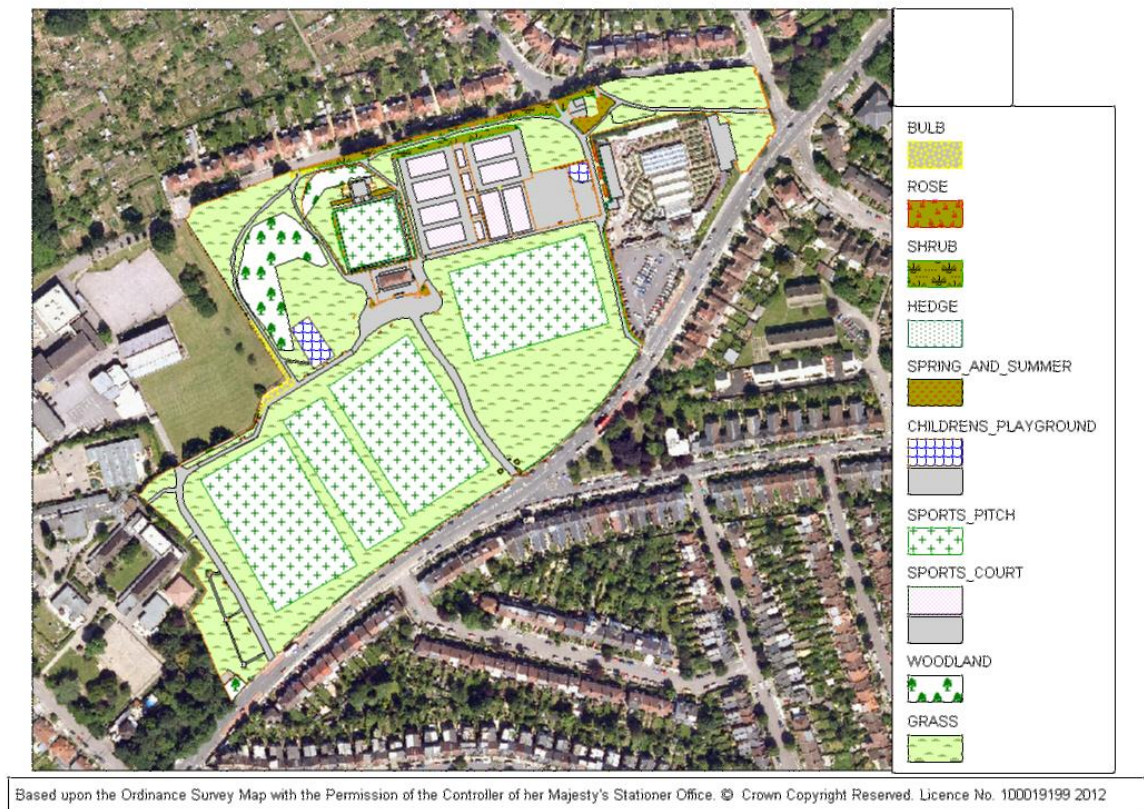


Fig 3: A map of Oliver Tambo Recreation Ground and its management areas is shown below.

Soft features

Feature	Quantity	Unit of measure
Grass	47,871.99	m2
Shrubs	1,049.07	m2
Sports Pitch	24,605.57	m2
Tennis Courts	8	No
Junior Tennis Courts	4	No
Bowling Green	1	No
Football Pitch	2	No
Mini Pitch	1	No
Junior Football Pitch	2	No
Hedge	304.78	m2
Spring and Summer Bedding	320.36	m2
Woodland	2,998.40	m2
Nature area and pond	636	m2
Bulb Area	183.81	m2
Rose Bed	51.47	m2

Table 1: Soft landscape features at Oliver Tambo Recreation Ground

Buildings

Feature	Quantity	Unit of measure
Pavilion Cafe	1	No
Bowling Green Pavilion	1	No

Staff depot	1	No
-------------	---	----

Table 2: Buildings at Oliver Tambo Recreation Ground

Hard assets

Feature	Quantity	Unit of measure
Paths	6,925.11	m2
Playground Surface	2,007.44	m2
Sports Pitch	24,605.57	m2
Tennis Courts	8	No
Junior Tennis Courts	4	No
MUGA	?	?
Bowling Green	1	No
Petanque terrain	1	No
Benches	45	No
Bins	35	No
Dog Bin	4	No
Gate	24	No
Park Sign	12	No
Oliver Tambo memorial	1	1

Table 3: Hard assets at Oliver Tambo Recreation Ground



The Trim Trail at Oliver Tambo Recreation Ground

2.3 Trees

Parks and open spaces are of significant arboricultural importance as they contain some of the largest and oldest trees in the Borough. Trees are an essential feature in

parks providing shade and structure, making them a more attractive environment to visit. There is a planned inspection programme, where we aim to inspect trees every four years. Trees in parks usually only require maintenance to mitigate risks to site users and adjacent properties. We have planted over 150 new trees in parks in 2017 and 2018, for which we have funding from the GLA.

We will be reviewing and updating policies on tree management as part of the new parks strategy. It is likely to include changes to inspection regimes and details on a more planned approach to new tree planting in parks.

Oliver Tambo Recreation Ground contains a range of deciduous and coniferous tree species. The dominant species is Hawthorn with over 100 specimens, there are also approx. 50 Oaks and 50 Acers. A number of the mature Oaks can be found along the northern boundary with Bidwell gardens, creating an important ecological corridor, which also includes other mature native trees. Within the north east corner of the site are a number of interesting conifers, including Redwoods, Pines and Cypresses.

‘The Big Tree Plant’ tree planting days were held at Oliver Tambo Recreation Ground in November and December 2018 funded through the Mayor of London’s Greener Capital Fund, to coincide with National Tree Week. There are current discussions about the wildlife area managed by the friends and the inclusion of further tree planting and management in that area.

3. A welcoming place

3.1 Visiting Oliver Tambo Recreation Ground

As well as being a destination in its own right, Oliver Tambo Recreation Ground also provides a pleasant route for people using the adjacent schools and plant nursery. It is directly connected to other parks and open spaces, including Bidwell Gardens and Tunnel Gardens.

Oliver Tambo Rec provides a wide range of sporting and recreational facilities.

Whether you fancy a game of tennis or basketball, are interested in bowls or petanque, or simply want to play a game of football, or join a fitness class, Oliver Tambo Recreation Ground has all you need.

There is also a good children's playground, a trim trail, a woodland adventure area, a nature area with a wildlife pond, and some lovely trees and flowers.

The Pavilion Café provides meals and snacks and also hosts activities and is the base for FORTR, the Friends of Oliver Tambo Recreation Ground.

You can also see the bust of Oliver Tambo, sculpted by Ian Walters who sculpted the statue of Nelson Mandela in Parliament Square. Oliver Tambo was the leader of the African National Congress during the apartheid years in South Africa who was exiled from his native country, coming to live near the park where his children played.

A life-like, life-size bronze statue of Oliver Tambo was added in 2019.

3.1.1 Public transport

London Buses 102, 184, 299 stop near the crossings on Albert Road. Bounds Green tube station is a ten minute walk away north along Durnsford Road, where the Piccadilly Line can be boarded.

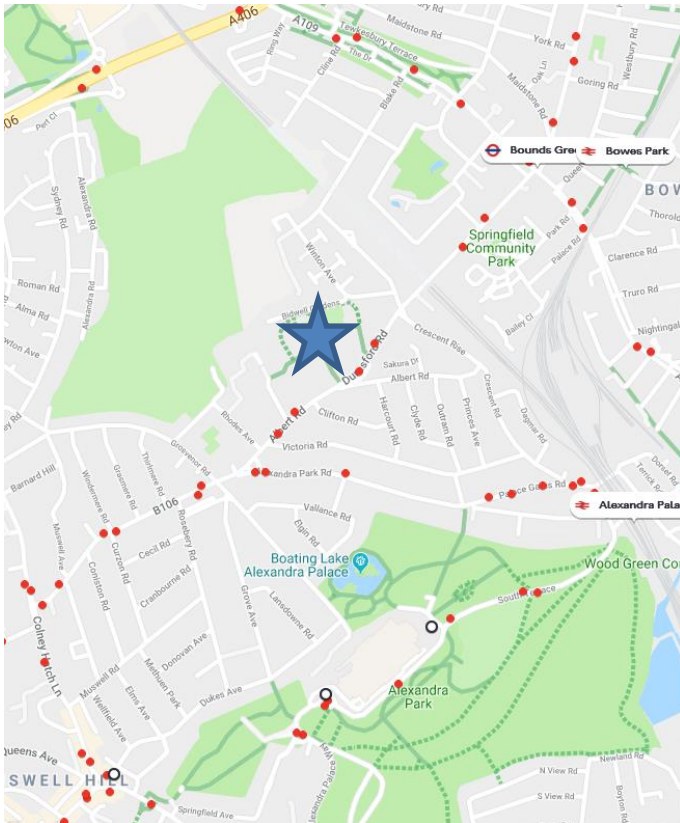


Fig 4: Public transport links near Oliver Tambo Recreation Ground (Location of site: )

<https://tfl.gov.uk/maps>

3.1.2 Vehicles

There is no public vehicle access to the site and limited parking is available in the surrounding roads.

3.1.3 Bicycles

Bicycles are permitted in Oliver Tambo Recreation Ground though cyclists are expected to be attentive to other park users on the shared use paths.

Cycling access is possible on the western side of the park where the access road to the schools accommodates both pedestrians and cyclists.

3.2 Entrances

Pedestrian access is via an entrance on Albert Road, two entrances on Durnsford Road, and two entrances on Bidwell Gardens.

Three pedestrian crossings can be found across Albert Road and one across Durnsford Road.

Albert Road Rec: Entrances

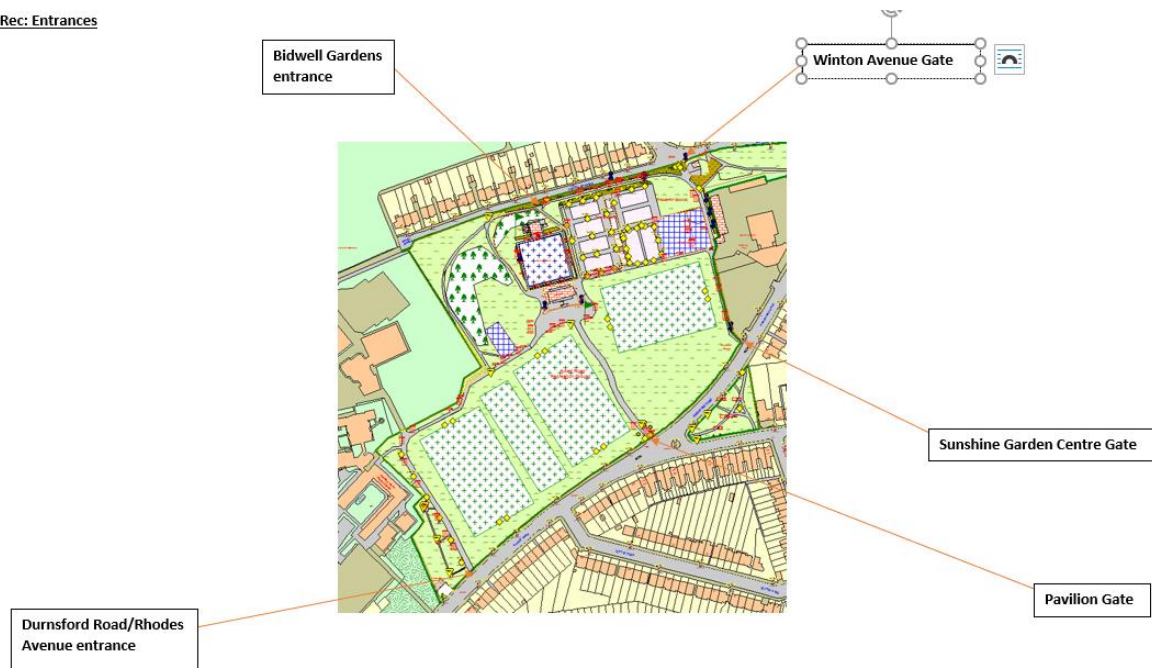


Fig 5: Entrances to Oliver Tambo Recreation Ground

3.3 Access for all

The Equality Act 2010 defines a disabled person as someone with ‘a physical or mental impairment, which has a substantial and long-term adverse effect on their ability to carry out normal, day-to-day activities’.

Haringey Council and its partners are required by law to ensure that disabled people are not discriminated against with regard to access to public places, such as Oliver Tambo Recreation Ground. The council is also committed to meeting its obligations under the Public Sector Equality Duty with regard to ensuring that those with and without protected characteristics under the Equality Act are able to enjoy the park’s facilities.

This commitment is considered whenever changes or improvements are made to the park. This not only benefits disabled users of the parks and their carers/companions, but also benefits those with small children and older people.

3.4 Signage

The welcome signs at each entrance to the park show an individual gate name for ease of identification as well as contact numbers for the council, police emergency and non-emergency numbers and for the Friends of Oliver Tambo Recreation Ground.

Symbols are also shown to highlight initiatives and make users aware of restrictions in place. These include:

- Shared use walking / cycling symbols (with pedestrian priority)
- no unauthorised vehicles
- keep your park tidy
- three dog control orders with potential penalty for failing to adhere

As well as the entrance gate signs, the play areas have signs which include:

- contact details for the Council
- any relevant age restrictions
- no alcohol symbol
- no smoking symbol
- no dogs allowed
- no glass bottles
- a message that children must be accompanied at all times

The site also has two noticeboards which are used by both the Friends of Oliver Tambo Recreation Ground and Haringey Council to publicise other relevant information and activities. These were refreshed in 2019.

3.5 Toilet facilities and refreshments

The Pavilion Sports & Café was founded in 2003 by Robby Sukhdeo, with the support of Haringey Council and the Friends of Oliver Tambo Recreation Ground (FORTR). The café is open 360 days a year from 9am until at least 6pm. It often stays open into the evening when the park is busy. The café offers a range of hot and cold drinks sandwiches and light meals, including a range of healthy options.

The link between the café and the sporting and recreational facilities has helped create an active hub in the heart of the park that has led to a significant increase in community usage and involvement at the same time as a significant decrease in criminal activity and anti-social behaviour at the park.

There is an outdoor seating area overlooking the pitches.

Public toilets are available immediately outside the café but due to vandalism in the past these are locked when the café is closed.

If the toilets need supplies park users can ask the café staff to replenish them. Maintenance issues can also be reported to the café staff or via the council's 'Our Haringey' smart phone app or by reporting via the website or by telephone.

3.6 Events

The council welcomes and encourages events put on for the community in Oliver Tambo Recreation Ground. The [outdoor events policy](#) sets out the types of events that are encouraged and those we do not allow..

Oliver Tambo Recreation Ground has the potential to host events for up to 13,000 people in the designated event area on the sports pitches. Those interested in holding an event of any size can refer to the [Events Brochure](#).

Small community events and activities are particularly encouraged so we have made the application process easier and events for under 100 people are free of any charge.

Money generated from events held in the borough contributes to providing support for community events to take place in parks. This includes more than £20,000 from the

[Parks and Open Spaces Small Grants](#) 'community events' theme which is available for anyone to apply for.

An environmental impact fee is set out within the events fees and charges. This is charged to hirers on a sliding scale with the price dependent on the size and scale of the event. This is specifically set aside for the Friends and recognised stakeholders of the park the event took place in, to bid for.

Event management training is also held each year for groups who want to learn how to put on a safe and exciting event.



Fig 6

The Friends of Oliver Tambo Recreation Ground put on a Jazz Fest, family sports day, quiz nights, Cancer fundraising and a Christmas party in previous years.

4. A Clean and Well-Maintained Park

4.1 Operational and management responsibility for parks

Responsibility for the management and maintenance of all the borough’s parks is split between three council teams.

The Parks Operations team is responsible for the ground’s maintenance and management of litter and hygiene within the park, while the Client and Commissioning Team is responsible for the physical assets within parks, arboriculture, allotments, nature conservation and the management of projects within parks.

The Active Communities Team is responsible for the management of events in parks, activation of parks through cycling, walking, and other fitness initiatives. The team is also responsible for the management of the council’s small grant scheme and its partnerships with Neighbourhood Watch and The Conservation Volunteers.

Simplified parks structure chart

Haringey park structure chart (April 2019)

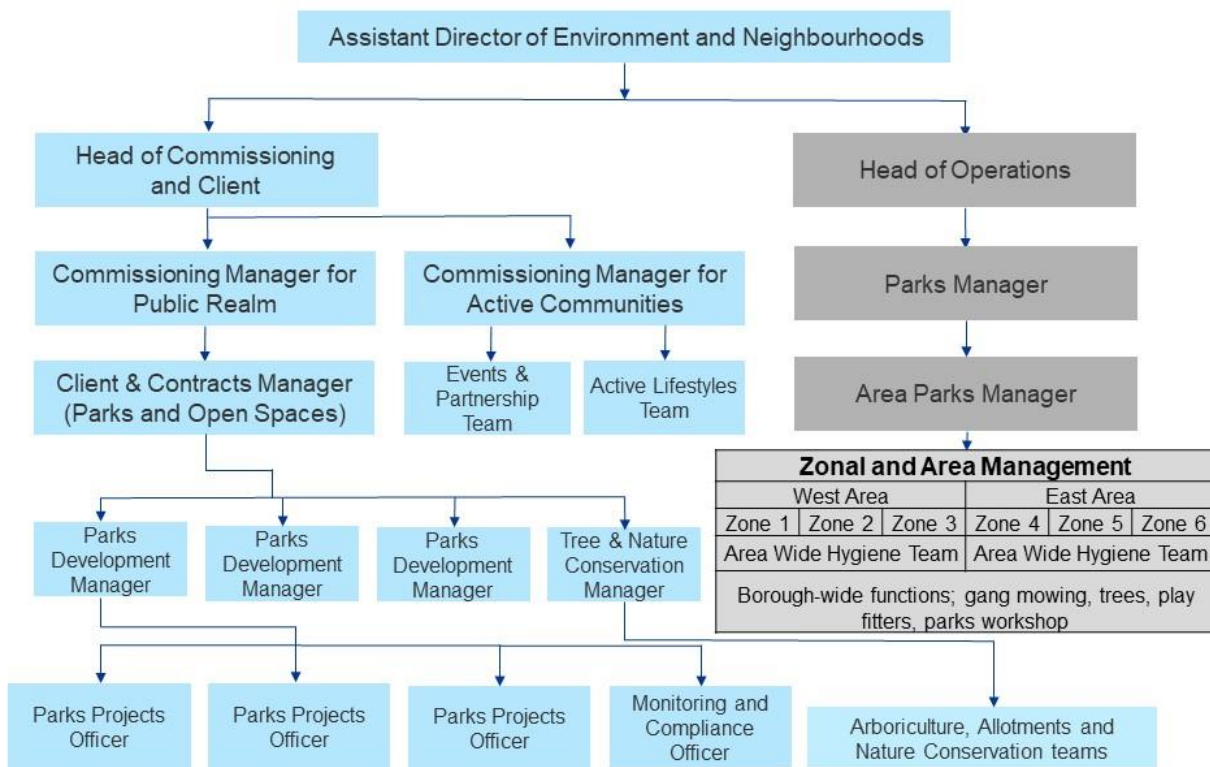


Fig 7

4.2 Current maintenance by Park Operations

The structure chart in section 4.1 shows a simplified overview of the work of the Park Operations Team (shaded in grey).

As shown, the borough is divided into two geographic sections (east and west), each of which is divided into three zones, giving a total of six zones across the borough. The zones are shown in the map overleaf.

Each zone has a six grounds maintenance staff: a team leader, a senior operative and four gardeners, but team sizes are altered to meet operational demands by transferring staff between zones and by bringing in seasonal agency resource as necessary. Oliver Tambo Rec is in operational zone 2.

The Parks Operations structure is the total resource available for all parks and open spaces. This not only includes council parks and open spaces, but also all the Homes for Haringey sites across the borough.

In addition to the zonal operations, the hygiene function is organised at a section-wide basis, one team operating in the east section of the borough and the other in the west. The hygiene teams empty litter bins across all parks and open spaces to an agreed schedule. They also respond to emergency cleansing and hygiene requests.

At a borough-wide level there are also two play fitters who undertake maintenance and repair of playground equipment and outdoor gyms, and a team of two in-house arboricultural staff who carry out tree planting and supplement the use of external contractors for tree maintenance and responsive arboricultural work. Tractor-based mowing of larger areas of grass is also carried out as a borough-wide activity.

There are also two parks workshop fitters who carry out regular servicing of equipment and reactive repairs to parks machinery. They are based in dedicated parks workshop at Ashley Road depot.

Most park operatives work Monday – Thursday 7.30am – 3.30pm and Friday 7.30 to 1.30pm. However, limited weekend work also takes place with pitch marking and hygiene activities for example.

Map showing zones for operational management of parks in Haringey



Fig 8

4.3 Asset management and management of projects in parks

The Parks Development team now works to the same six zones as the Operations team. A new zonal team has been created with each zonal team member being responsible for two zones. Each zonal officer has responsibility for:

- Regular asset inspections
- Asset related enquiries
- Non-emergency asset repairs
- Management Plan input
- Project identification
- Friends Groups liaison
- Support for Friends-led development work
- Councillor liaison
- Identification of volunteering opportunities

The allocated officer for Zone 2, in which Oliver Tambo Recreation Ground sits, is Glynis Kirkwood-Warren, Parks Zonal Manager.

A Nature Conservation Officer has responsibility for parks and open spaces across all zones, including Oliver Tambo Recreation Ground.

4.3.1 Park asset inspections and Spotlight visits

In 2018 the council adopted the Mayor of London’s typology for parks. Under this typology Oliver Tambo Recreation Ground is described as a local park site (A3) as it is between 2-20 hectares in area.

Since January 2019 the council has also instigated a programme of park asset inspections with the frequency dependent on the type of park. As a local park Oliver Tambo Recreation Ground is inspected every quarter.

The inspections cover hard assets, including:

- Bins, benches, bollards, lighting columns
- Signage, noticeboards, interpretation
- Paths, steps, handrails, areas of hardstanding, car parking and roadways
- Railings, fencing, gates, walls
- Play area safety surfacing and minor repairs
- Outdoor gyms
- MUGAs, tennis courts, hard sports courts
- Football goalposts
- Paddling pools
- Historic/heritage features/War memorials
- Fountains, artworks, structures, pergolas
- Waterbodies, SUDs, water leaks, drain covers
- Cycle stands, raised beds
- Bird & bat boxes

Parks assets are inspected and rated according to their condition, as follows:

A: Excellent: No action required

B: Good: No action required

C: Acceptable: No action required

D: Improvement required: Defects will be addressed as budgets allow

E: Emergency repair required: Make-safe within 24 hours. Full repair within 28 days.

All hard assets are inspected on a quarterly basis to ensure that none have deteriorated to such an extent that they would pose a significant risk of causing injury to the public.

From 2020 we plan to use the Confirm database system to record the outcomes of all inspections, defects and customer enquiries. ConfirmConnect handheld devices will be the main tool for recording site inspections.

Defects can also be reported by the public, Friends, councillors and stakeholders online via the Council's website at www.haringey.gov.uk/park-problem or by using the 'Our Haringey' smart phone app or by calling the council. This resource is also available to Council staff.

As part of our zonal approach we have also started to hold 'Spotlight meetings' with councillors, Friends and key stakeholders of Oliver Tambo Recreation Ground every quarter. This is an opportunity to look at the park together to identify issues and opportunities within the park and by the stakeholders. The first of these was held in April 2019.

4.3.2 Capital projects

A parks capital project commences once a project brief has been approved by the council's Parks & Leisure Projects Board and a capital budget and project manager has been allocated. The project manager is a member of the Parks Development team's 'projects team'.

Capital projects for Oliver Tambo Recreation Ground are listed in the Action Plan in section 12

4.4 Scheduled Maintenance

The following table provides a summary of the maintenance regime within Oliver Tambo Recreation Ground.

Scheduled maintenance in Oliver Tambo Recreation Ground (Table 4)

Activity	Frequency	Notes/comments
<p>Grass cutting:</p> <p>To achieve grade A at each maintenance visit:</p> <ul style="list-style-type: none"> • Grass has been uniformly cut and is 35mm or less. • Edges are trimmed and not growing onto hard surface or bedding. • Litter picking prior to mowing. <p>Grass remains at grade B or above prior to maintenance visit:</p> <ul style="list-style-type: none"> • Grass is 35-60mm long but looks tidy. • Edges are slightly untidy • Litter picking as per hygiene schedule. 	<p>Approximately Fortnightly</p>	<p>During the growing season (Mar-Oct approx.). May extend into November subject to prevailing climatic conditions.</p>
<p>Bulb areas in Grass</p> <p>To achieve grade A:</p> <ul style="list-style-type: none"> • Areas where bulbs are present should remain uncut from time of bulb emergence, until 6 weeks after flowerings ceases, or 	<p>One occasion plus regular litter picking</p>	<p>Works required where bulbs are present in grass on site.</p>

Activity	Frequency	Notes/comments
<p>when foliage dies back or turns brown.</p> <ul style="list-style-type: none"> Litter picking as per hygiene schedule. 		
<p>Meadows</p> <p>To achieve grade A:</p> <ul style="list-style-type: none"> Meadow grass is cut at correct times of year for species type. Area surrounding the meadow is well maintained. Litter picking as per hygiene schedule. 	<p>One or more occasions subject to type. Plus regular litter picking.</p>	<p>Guidance on maintenance schedule to be drawn from the conservation management plan for each park.</p>
<p>Shrub and Rose bed maintenance</p> <p>To achieve grade A at each maintenance visit:</p> <ul style="list-style-type: none"> Bed free of weeds. No litter. Mulched where appropriate. Wide variety of plants. Roses deadhead as required. Shrubs pruned as required. Edging well maintained. 	<p>Two – four occasions as required per location.</p>	<p>Herbicide application will take place on two occasions a year via controlled droplet application.</p>
<p>Summer Seasonal Flower Beds</p> <p>To achieve grade B at each maintenance visit:</p> <ul style="list-style-type: none"> Bed free of weeds. No litter. 	<p>Up to ten occasions</p>	<p>Gapping up of bedding to take place in response to vandalism.</p> <p>Drought tolerant planting to reduce need to water.</p>

Activity	Frequency	Notes/comments
<ul style="list-style-type: none"> • Adequate variety of plants (more could be added – excluding beds that have plants that are not yet established). • Edging maintained. • No deadheads. 		
<p>Hedge Maintenance</p> <p>To achieve grade A at each maintenance visit:</p> <ul style="list-style-type: none"> • Well shaped and trimmed hedge. • Level sides and top. • No missed areas. • Base weed free. • No arisings present 	<p>Two occasions per year except Privet hedges requiring three occasions.</p>	<p>Account of bird nesting to be taken each year and site specifics.</p>
<p>Staked Tree Maintenance</p> <p>To achieve grade B at each maintenance visit:</p> <ul style="list-style-type: none"> • Growth is healthy and vigorous with little sign of disease. • Branches have been correctly pruned for species, purpose and location. • No dead or hanging branches. • Small amount of basal or sucker growth. • Base has been mulched where applicable. • Tree stake in good condition, firm in ground and 	<p>One occasion per year plus watering for new trees during first two seasons</p>	

Activity	Frequency	Notes/comments
<ul style="list-style-type: none"> • not rubbing tree where applicable. • Tree tie holding tree firmly but not tightly to stake where applicable. • No damage to base of tree during maintenance. • No dead material or cuttings left in area. 		
<p>Sports Pitch Maintenance</p> <p>To achieve grade B at each maintenance visit:</p> <ul style="list-style-type: none"> • Surface in good condition. • Grass is cut to standard. • Line markings are well maintained and may be slightly faded. • Where net supports exist, in good condition. • Leaf fall removed. • Litter picking as per hygiene schedule. 	<p>A minimum number of visits as required to achieve the grass height required for football / rugby.</p> <p>Weekly line marking during playing season</p> <p>Winter season work as required to optimise playing period.</p>	<p>Seeding and fertilising as required.</p>
<p>Bins, Litter and Dog Fouling</p> <p>To achieve grade B at each maintenance visit:</p> <ul style="list-style-type: none"> • All bins are emptied • The site is litter picked but may have a small amount of scattered litter in low traffic areas. • Predominately free of detritus except for some light scattering. 	<p>Daily</p>	<p>Dog fouling dealt with when reported.</p>
<p>Fly tips and other hygiene issues</p>	<p>Reactive</p>	<p>In response to emergency call-outs</p>

Activity	Frequency	Notes/comments
Sweeping of hard surfaces (e.g. tennis courts, hard standing etc)	Reactive	
Gate locking	Daily	Not applicable to all parks

4.5 Setting and measuring service standards

The quality of grounds maintenance and cleanliness of parks and open spaces is assessed via a simple four-point assessment system, called the Parks Quality Scoring system.

The scoring categories are:

A – Excellent

B – Good

C – Acceptable

D - Unacceptable

These service standards are set out in a booklet that is made available to all grounds maintenance and hygiene operatives. The aim of the booklet is to clearly and visually illustrate the different standards. Photographs, alongside brief and simple text, provide staff with a clear means of assessing the standards they are expected to achieve.

This system has since been adopted by the London Parks Benchmarking Group who have updated the manual and are working hard to get this recognised as an industry standard within the grounds maintenance trade both on a London-wide and on a national level.

The key performance indicators (KPIs) within this scoring system are for three main areas of activity and a fourth more seasonal category:

- Grass (which includes the grass cut height, follow up and final finish)
- Shrubs (which includes pruning, weeding of beds and general appearance)
- Hygiene (which is made up of 3 separate scores of litter and bins, detritus and graffiti)
- Seasonal and other categories (horticultural seasonal work such as hedges, leaf clearance, rose bed maintenance and seasonal bedding as well as nature conservation and some infrastructure points such as pathways).

The Monitoring and Compliance Officer visits each park and open space on a regular basis to assess these aspects of the park against the service standards.

An overall score is calculated based on the percentage of A (Excellent) and B (Good) scores achieved across all categories.

Illustrative service standards for grass cutting



Fig 9

The boroughwide targets and performance for these KPIs are as follows (Table 5).

Category	Target A/B	Achieved 2018-19
Overall Site Standard	90%	61%
Grass	90%	83%
Shrubs	60%	71%
Hygiene	55%	65%

4.6 Monitoring the condition of equipment and physical assets

The Parks Zonal Manager carries out a quarterly site inspection of the physical assets in Oliver Tambo Recreation Ground. The condition of each item is noted and where applicable repairs (or replacements) are requested. Any grounds maintenance or hygiene issues that are observed, such as overflowing bins or dumped rubbish are raised with the appropriate officer within Parks Operations.

The asset inspections do not include play and outdoor gym equipment which are inspected by the RPII registered Play Inspection Company on a quarterly basis. They conduct detailed quarterly inspections on all play equipment and outside gym equipment to ROSPA standards. Each item of equipment is risk assessed and a written report is provided to the council. Where equipment is deemed to represent a medium or high risk it will be repaired, and if necessary taken out of use until the repairs are completed.

Two council officers within Parks Operations are also trained and qualified ROSPA inspectors and can sign off any repair to play and gym equipment.

4.7 Tree maintenance programme

Tree works in parks, open spaces and woodlands are usually undertaken to mitigate risks to site users and adjacent properties. For example works to trees in Oliver Tambo Recreation Ground have in the past been carried out to improve security on site by raising the canopies of the trees to increase sight levels and reducing overhanging branches into adjacent roads.

Removal of dead, dying and/or dangerous trees has also been undertaken.

4.8 Graffiti

All graffiti of an obscene or offensive nature is removed within 24 hours of being reported. We aim to remove all other graffiti within three working days. Small bits of graffiti can be removed by parks operatives who have access to specialised graffiti removal kits.

Park users can report graffiti using the Love Clean Streets smart phone app, and the council website. The Council also has a 'hotline' number (020 8885 7700) direct to Veolia (the council's waste management contractor) to report obscene or offensive graffiti in parks and other public places.

4.9 Maintenance of buildings, equipment and landscape

Building maintenance in parks is shared between lease holders and the council. Most modern leases in the parks have been let on a full repairing and insuring basis relieving the council of this ongoing obligation.

Older leases are internal repairs only and along with the operational buildings in parks are maintained by the council's facilities management service. The budget for building maintenance is held by them and they are responsible for maintaining the buildings and ensuring compliance with legislation.

Equipment maintenance is carried out internally by the parks service for all types of equipment. Play inspections are undertaken internally and through external specialist on a quarterly basis.

Landscape maintenance is carried out by the parks service. Options to reduce and find alternatives to chemical use in Haringey's parks is currently being explored through the research for the policies and service standards elements of the emerging Parks & Green Spaces Strategy.

4.10 Hygiene

The Hygiene Team is managed by Parks Operations, covering borough wide hygiene responsibilities. Within Oliver Tambo Recreation Ground waste bins are emptied on a daily basis, and any dumped rubbish that is reported to the service will be removed. New Council policy is for the removal of all dog bins from parks.

5. Healthy, Safe and Secure

5.1 Smoking

Smoking is permitted (though discouraged) in Oliver Tambo Recreation Ground although priority 2 of the council's Health and Wellbeing Strategy identifies smoking as a key factor in reducing life expectancy.

However, there is a borough wide smoking ban in place in all children's playgrounds including in Oliver Tambo Recreation Ground. Signage at playground entrances highlights this.

5.2 Alcohol

Alcohol is permitted in Oliver Tambo Recreation Ground but an Alcohol Control Public Spaces Protection Order (PSPO) for Alexandra ward includes the entire area covered by the park.

PSPOs are intended to deal with "nuisance or anti-social behaviour in a particular area that is detrimental to the local community's quality of life". Failure to comply with a request from an authorised person to cease drinking or surrender alcohol within the boundary of the PSPO can result in a fine. An authorised person is a police officer, a police community support officer or an authorised member of council staff.

The Alexandra PSPO has been operation since October 2020 and lasts for three years. It may be renewed for another three years after it expires.

Further details can be found at <https://www.haringey.gov.uk/community/community-safety-and-engagement/anti-social-behaviour/public-spaces-protection-orders-pspos>

5.3 Walking

Walking is an excellent way to adopt a more active lifestyle and the health benefits can really make a difference. It's also a great way to get out and meet people.

The parks service in partnership with other agencies such as NHS Haringey offer regular organised walks in many of the borough's parks.

In 2018 a booklet called *A Walk in the Park* showcases several walks through Haringey parks.

Image: Walking trail information board (Fig 10)



Further details on walks and walking groups can be found at <https://www.haringey.gov.uk/parking-roads-and-travel/travel/walking>

5.4 Health and safety

The health and safety of visitors to, and staff and contractors working in Oliver Tambo Recreation Ground is given the highest priority. Health and safety within the park is managed by ensuring that:

- play and outdoor gym equipment is installed safely and inspected regularly, with any repairs identified and prioritised through the inspection process.
- infrastructure items (including games areas, water features and so on) are inspected regularly as detailed elsewhere in this document.
- planting and landscaping is designed to minimise the risk to park users, and the operational maintenance programme keeps these risks managed

The Council's decision to focus sports investment into Oliver Tambo Recreation Ground was ultimately triggered by the high levels of crime and anti-social behaviour at the site that led to some capital pump-priming after a joint assessment with the LTA concluded that it was the number one borough site to focus the development of tennis and other sporting activity. The Council then supported the letting of the run-down pavilion to become the Pavilion Sports & Café that has since 2002 turned around the crime statistics and created a powerful sporting hub for the local community. The Council continues to support sporting and active travel initiatives at Oliver Tambo Recreation Ground.

5.4.1 Raising health and safety concerns

Anyone visiting a park, and everyone involved in the parks maintenance and management are encouraged to report any health and safety concerns.

Contact phone, email and web details for the Council appear on all welcome signage, as well as the police emergency and non-emergency numbers.

When people call the Council with a concern, these are logged, assessed and assigned to a relevant team/member of staff to deal with and respond to in an appropriate timescale, using the Confirm system.

5.4.2 Friends

Members of the Friends of Oliver Tambo Recreation Ground are able to report issues within the park in exactly the same way as members of the public, but they also have close links with the Parks Project Officer and with Operations staff, so will usually approach them directly.

Council officers regularly attend the Friends meetings where issues can be raised and discussed.

Friends are also encouraged to report issues of anti-social behaviour and other issues through the Neighbourhood Watch Coordinator who will direct these to the most relevant person within the police to deal with them.

5.4.3 Risk assessments

The Parks & Open Spaces team ensures that prior to any works being undertaken on Council land, its consultants, contractors and other organisations prepare for approval all necessary Risk Assessments and Method Statements (RAMS) covering all proposed works operations. In addition to the usual operations, the Council requires consultants and contractors to provide specific RAMS covering potentially contaminated land, underground services and other unforeseen underground matters, such as UXO (Unexploded Ordnance), and measures to protect the public during any works. Contractors are further required to undertake CAT scans prior to excavations.

The Parks & Open Spaces team ensures that, where excavations are to take place, underground services information is obtained from utility providers and the Council's Pollution team prepares contaminated land desk studies.

5.4.4 Safety representatives

The parks operations service holds a quarterly Health and Safety Working Group, which is chaired by a council health and safety specialist. It is attended by representatives of operational management, staff from both east and west areas, and trades unions. These quarterly meetings provide the opportunity to raise issues that have not been fully addressed elsewhere. The group is also a place to discuss health and safety issues and legislation, and their implications on working practices and plays a key role in generating continual improvement in health and safety standards.

5.4.5 Staff reporting

All staff are encouraged to raise health and safety issues with their manager or with the health and safety representative who can raise concerns at the quarterly Health and Safety Working Group.

5.5 Reporting issues with the 'Our Haringey' app

The 'Our Haringey' app makes it quick and easy to report problems when people are out and about in the borough. Once the app has been downloaded to a Smartphone, the public can take photos of the problem and send it directly to the team responsible

for fixing it using the Confirm system. They will then receive progress updates and will be told when the reported issue has been fixed.

Unlike other 'report it' style apps, 'Our Haringey' asks the user to choose from a list of Haringey specific categories for the problem, which ensures the report goes to the right team, first time so it will be dealt with as quickly as possible.

5.6 Community safety and policing

Parks in Haringey remain relatively safe places, especially during the hours of daylight. Over the whole of 2020 there were 767 reported crime or incidents reported to the police across all the parks and open spaces in Haringey – an average of 63 incidents per month.

The breakdown of stats for 2021 is only available for January to September. During this period a total of 492 incidents were reported to police across all parks in Haringey – an average of 54 per month. This is a decrease of 16% and could be due to parks being much busier and therefore deterring some criminal and asb activity.

The most commonly reported crime in parks in 2021 remains robbery, which accounts for about 22% of reported crimes, but this is a seven percent decrease from the previous year. The majority of these took place after dark. Reports nearly trebled over the spring/summer months compared to the rest of the year due to the higher footfall in parks.

Between January and April 2021 in Oliver Tambo Recreation Ground there were 7 reported crimes. Oliver Tambo Recreation Ground accounted for 1.4% of all reported crimes in Haringey parks.

These figures reflect an extraordinary transformation in stark contrast to the 2005 figures, where there were over 250 incidents reported in the park. The 'activation' of the park through community sporting initiatives such as tennis, football, basketball has ensured that 'bored teenagers' are now actively engaged in positive activities.

Over the years there have been a number of initiatives the Council has implemented to make the parks safer for all who use them. However cuts in budgets in the last decade have hit these initiatives.

The Neighbourhood Policing Team for Alexandra ward has strong links with Oliver Tambo Recreation Ground and aims to patrol the park each day. Police officers are in regular contact with council officers and often attend Friends meetings.

5.7 Extending Neighbourhood Watch into parks

Neighbourhood Watch groups across the borough are encouraged to adopt a local park or green space.

The Neighbourhood Watch Officer is proactive in helping to reduce crime in our parks through interventions such as asking all Neighbourhood Watch Groups to include their local park or green space in the Watch and report any issues of concern, organising a monthly dog walk in a different park every month, where dog walkers are asked about

how safe they feel and encourage ongoing engagement with the police, regular communication with Friends of Parks Groups and the Friends Forum, including attending their meetings when invited, and providing monthly crime statistics to the Council and senior police officers showing crime trends and where resources are required.

5.8 Designing out crime

It is widely recognised that key factors in ensuring park safety and the perception of safety are to ensure high usage, adequate onsite staffing presence, good maintenance of buildings and infrastructure and a high level of community involvement and 'ownership'. These matters are dealt with in other sections.

Sensitive landscape management can also assist in reducing crime. Assessing accessibility and potential crime spots, known as 'designing out crime' may result in the removal of inappropriate tall shrubs and their replacement with a more suitable low growing species. In other instances entrances may be redesigned, or lighting installed.

5.9 24 hour access

Oliver Tambo Recreation Ground is not locked overnight.

There is a lit route from Durnsford Road to the park entrances of Rhodes Avenue School and Alexandra Park School to support school children on dark evenings and the Pavilion Sports & Café has CCTV. The Council is currently working with the Friends and the Lighting team to explore options for increasing the lighting and CCTV coverage at Oliver Tambo Recreation Ground, including looking at funding options for these.

5.10 Dogs

Dogs and dog walking are a valuable part of the park scene, and dog carers are probably the main daily user group in many green spaces. Their collective presence is a key ingredient of green spaces being populated and safe to use, especially at quieter times of the day and year. Dog walkers are often described as 'eyes and ears' of a green space.

5.10.1 Control of dogs

We recognise that the vast majority of dog owners are responsible and respectful to their local community. However, we receive complaints from residents about dog fouling and the behaviour of some dogs (and their owners).

A Public Spaces Protection Order (PSPO) is in place across the borough to control the behaviour of dogs. The prohibitions have been designed to be as simple as possible, giving clarity and outlining expectations.

Well behaved dogs can be walked or exercised freely off lead in all large parks (over half a hectare) including Oliver Tambo Recreation Ground. This promotes healthy exercise for dogs and takes into consideration the needs of the borough's dog owners and the welfare of dogs.

The Public Spaces Protection Order (PSPO) covers five areas of dog control:

- Dog fouling
- Keeping dogs under control
- Putting dogs on a lead if directed
- Keeping dogs out of designated areas (such as playgrounds)
- Limiting to six the number of dogs that one person can bring to the park

Failure to comply with the requirements of the order can result in a fine or to court if the fine is not paid within a specified timeframe.

The PSPO is in force for three years from October 2017 and can be extended for a further three years. Full details can be found at

[www.haringey.gov.uk/sites/haringeygovuk/files/pspo - dog control - with seal 0.pdf](http://www.haringey.gov.uk/sites/haringeygovuk/files/pspo_-_dog_control_-_with_seal_0.pdf)

These powers came into effect on the 20 October 2017, introduced under the Anti-Social Behaviour, Crime and Policing Act 2014. The Public Space Protection Order will remain in force for three years.

Matters relating to dangerous dogs and dog attacks on people or other dogs should be reported to the Police rather than to the Council.

6. Sustainability

6.1 Greenest borough strategy

Haringey's Greenest Borough Strategy was adopted in 2008 in response to growing concerns around climate change.

The Strategy sets out the Council's and its partners commitment to tackle climate change under seven environmental policies to ensure achievement of their 'green' vision over a ten-year period, and details what the council, its partners and the public can do to contribute.

- Improving the urban environment
- Protecting the natural environment
- Managing environmental resources efficiently
- Leading by example
- Encouraging sustainable design and construction
- Promoting sustainable travel
- Raising awareness and involvement

The management and maintenance of parks and how they are used relate back to many of the individual targets within the strategy. Where possible these have been instilled in everyday working practices in and relation to Oliver Tambo Recreation Ground.

6.2 Pesticide use

The council uses a range of herbicides to control weeds in parks. It remains the most effective in terms of the required resources – with two treatments per year often sufficient to prevent weed growth, as opposed to regular treatment by hand or other means.

Chemicals are stored, handled, used and disposed in accordance with manufacturer/supplier requirements, and a COSHH assessment is prepared for each of the substances used.

Reliance on mechanical methods of weed control (e.g. strimming) is reducing as this has an impact on both the operator and also does not address the weed at its roots.

The use of herbicides as a principal form of weed control is increasingly under scrutiny, and the parks department is routinely considering alternatives. This is particularly true of weedkillers containing the component glyphosate. This has received a lot of press coverage subsequent to court cases in the United States, but it remains licensed for use in the UK and Europe.

Officers of the council monitor developments in scientific findings. At this stage, glyphosate appears not to cause harm to humans or any animals larger than micro-organisms.

The use of pesticides and chemicals will be reviewed as part of the development of the new Parks and Green Spaces Strategy.

A pilot study is being undertaken in one of Haringey's parks in 2022 trialling a no-pesticide use approach, the findings of which will be adopted in other parks where appropriate.

6.3 Sustainable use of materials

The parks service refrains from the use of non-sustainable peat-based products and challenges nursery suppliers to provide alternative supplies. Where plants are obtained from private nurseries we request plants grown in a peat free environment.

Our infrastructure procurement policy is to use recycled materials where possible. We aim to acquire recycled plastic benches where possible; or where timber is required we seek to use those from sustainable sources.

6.4 Recycling

Although some parks have dedicated onsite recycling bins, all waste collected from parks be it from standard waste bins, or recycling bins is taken to the North London Waste Authority (NLWA) depot. Materials that can be recycled are extracted and processed accordingly.

Where possible green waste is recycled on-site; grass cuttings are left on the grass; and hedge cuttings are mulched and placed under the hedge or in other areas of the park.

In autumn when a large amount of green waste is generated, that which cannot be used or composted on site is taken to the NLWA depot for recycling. The resulting compost is then collected for use in the parks.

After Christmas the borough has a number of advertised sites where people can drop off their used Christmas trees. One of these is Oliver Tambo Recreation Ground. The old trees are stored in the park before being transported to the NLWA depot where they are recycled.

6.5 Pollution reduction

All new machinery used in parks is required to have low vibration levels and low emissions. Machinery is serviced on a regular basis by our in-house parks workshop, helping to ensure low emission and pollution levels. Vehicles meet current emission requirements, and the fleet will comply with the requirements of the London-wide Ultra Low Emission Zone when that is introduced in October 2021 to include Haringey.

We also aim to reduce vehicle emissions through increasing the amount of on-site composting; and through reducing downtime caused by excessive travelling.

Bonfires are not used for safety reasons as well as health concerns due to the smoke.

6.6 Water efficiency

Drought resistant plants and trees are increasingly being chosen by managers to ensure that they survive the drier and warmer months and require less watering during these periods.

6.7: Geomorphology and climate

Hydrology: No watercourses lie within or nearby the site. Standard rainfall for this catchment is 667mm, significantly lower than the UK average rainfall of 885mm/year.

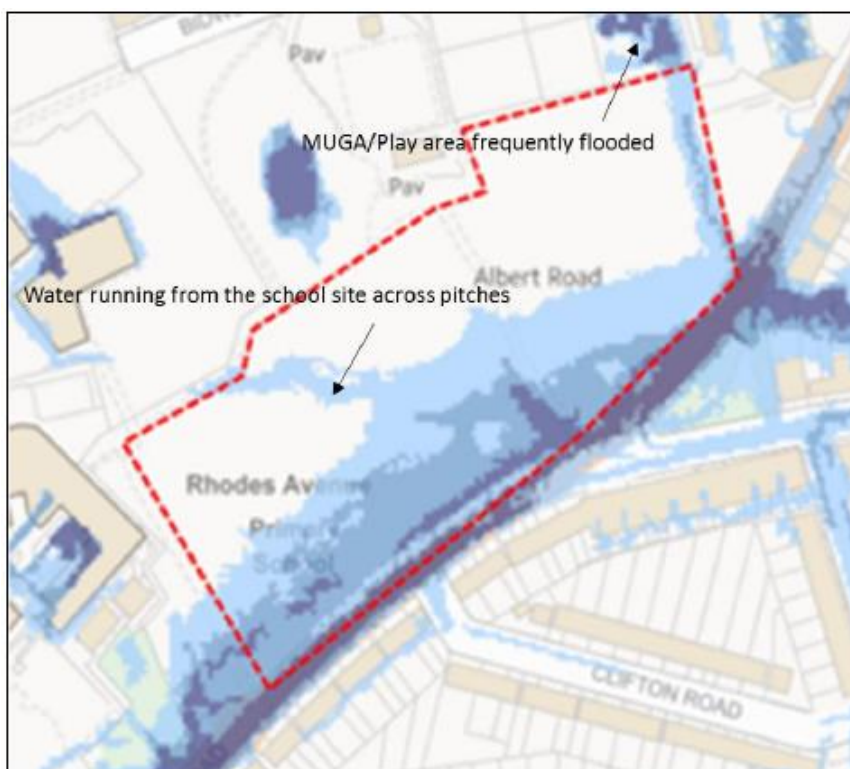
Risk of flooding: The site has between a low and high risk of flooding from surface water (between 0.1% and 3.3%) and a low risk of flooding from rivers or sea water (between 0.1% and 1%)

Groundwater: The area is not within a Groundwater Source Protection Zone. A deep bored soakaway is not likely to be permissible by the Environment Agency.

Geology: Geology is likely to be Bedrock Geology, London Clay Formation: Clay, silt and sand. Sedimentary bedrock formed approximately 48 to 56 million years ago in the Palaeogene Period. Predominantly clay deposits. Local environment previously dominated by deep seas.

Soils: Soils are predominantly clay loam topsoils containing a moderate stone content overlying siltier subsoils with high clay content and very high silt content.

There is a large underground storm water attenuation system underneath the western side of Oliver Tambo Recreation Ground, created over 20 years ago. Options to resolve the site's waterlogging are being considered with reference to this system.



7. Community Involvement

7.1 Volunteering in parks

Haringey Council actively supports and encourages volunteering in our parks and green spaces. There are a range of mechanisms to support volunteering and community involvement.

7.1.1 Community Volunteering

The Conservation Volunteers (TCV) are based at Railway Fields Local Nature Reserve, N4. They deliver conservation volunteer days across the borough on behalf of Haringey Council. They also support delivery of training opportunities as well as development of site-specific conservation action plans.

During 2018-19, TCV delivered 155 conservation days across parks in Haringey, involving over 1,200 volunteers. In addition, 6 training days were provided for volunteers on the following subjects: leadership training, leading guided walks, winter tree identification, environmental education volunteers, wildlife garden design and hedgelaying training.

At Oliver Tambo Recreation Ground, TCV delivered 3 conservation days involving 71 volunteers from the local community. Conservation activities included tree planting, hedge planting, vegetation management and natural path maintenance.

During 2019-20, TCV will be delivering 4 volunteer conservation days at Oliver Tambo Recreation Ground.

New Community Engagement Officer and Volunteering Officer roles have been created and will be recruited in early 2022.

7.1.2 Corporate volunteering

Haringey Council actively supports companies and corporate volunteers within our parks and green spaces. Corporate volunteering provides an opportunity for employees to be involved in a different experience whilst supporting our management and improvement of green spaces.

During 2018-19, TCV supported 14 corporate volunteer days across the borough with tasks ranging from habitat creation and vegetation management, to creating countryside furniture and nature trails.

Specific opportunities for corporate volunteers are included within the site Conservation Action Plan (section 8.4) to ensure that the sessions support wider management of the site whilst providing an engaging and rewarding opportunity for the volunteers.

7.2 Haringey Friends of Parks Forum

Haringey residents have proved to be committed to protecting and improving open space within the borough and there are over 40 separate Friends of Parks Groups, as well as a borough-wide Haringey Friends of Parks Forum which meets six times a year.

The Forum was set up by Friends Groups as an independent network in 2002, one of the first to be established in London. The Forum provides an opportunity for Friends Groups to work together for the good of Haringey's green spaces. The Forum's 'What We Do and How We Do It' document describes the work of the Friends Groups as such:

Friends Groups do a huge amount and put in thousands of hours of volunteer time to:

- help develop maintenance and management plans for our parks and green spaces
- raise funds for improvements needed
- prevent inappropriate development in parks and green spaces
- plant trees, shrubs and flowers and help create play areas, seating and other facilities
- conduct regular walkabouts with parks staff and produce maintenance updates
- organise activities that encourage local residents to safely use their local open spaces, including festivals involving up to thousands of local people

The Forum has been effective in lobbying and campaigning for:

- better planning policies as they affect open spaces
- more ambitious and effective open space standards
- greater levels of on-site staffing
- giving support to individual Friends Groups

Friends Groups communicate and co-ordinate through the Forum's email list. The Friends Groups liaise closely with all council park services, and have been key agents in helping to bring in millions of pounds in external funding to improve facilities for local people.

They have worked with the Council on achieving Green Flag status for many parks and open spaces. The Forum is supported by the Council and Parks Officers attend a session during the Forum's meetings to take note of each local Friends Group's issues, and to discuss wider issues of common concern. The Council is publicly committed to active partnership working with Friends Groups and the Forum, and minutes of all Forum minutes are displayed on the Council's website.

The Forum works with Haringey Federation of Residents Associations and the Haringey Allotments Forum. It also links up with similar grass-roots residents' Forums and networks throughout the UK through the London Friends Groups Network and the National Federation of Parks and Green Spaces.

7.3 Friends of Oliver Tambo Recreation Ground (FORTR)

The Friends of Oliver Tambo Recreation Ground is a voluntary not for profit community group made up of local residents working for the whole community.

The Group was founded in 2001 by a number of local volunteers with a keen interest in delivering improvements to our local park and involving the local community in its future.

They have a Constitution to which they adhere, including rules on when to hold their AGM, how and when to elect members and officers of the committee and more.

The Group functions through an elected committee of officers which include the Chair, Vice Chair, Secretary, Treasurer and ordinary members as well as ad hoc or permanent sub-committees established under the Constitution.

They meet formally in the Pavilion Café 4 times a year throughout the year.



Fig 11

FORTR endeavours to play a significant role in ensuring that local community views and aspirations in relation to Oliver Tambo Recreation Ground and its facilities are taken into account by the Council and other relevant agencies and partner organisations. For this reason, we strongly encourage:

- The active involvement of the local community in the affairs of the park through a range of meetings, feedback activities and events within Oliver Tambo Recreation Ground
- Local residents and families to support our work by becoming a friend of FORTR

7.4 Other community involvement

The Pavilion Sports and Café has been a significant contribution to the park since 2003 providing 6 full sized tennis courts and 4 mini tennis courts at the site. They provide a year-round programme of sporting activities for both children and adults, including individual and group coaching, children's holiday camps, cardio tennis, free play, social play, match lay, team activities for children and adults and an outreach programme engaging all the local schools.

Provision of sporting and other diversionary activities for young people has led to a direct, quantifiable and long-term reduction in crime and anti-social behaviour in the area. This is bolstered by a work experience programme, where every school in Haringey provides children to undertake work experience on the sports programmes at Oliver Tambo Recreation Ground. Such placements are arranged through an agreement between Haringey Council, Haringey's schools and Diamond Education Services and can be booked simply by completing and returning a form, which Pavilion Sports & Café do on a regular basis.

The Friends and other key stakeholders including Ward Councillors are invited to participate in quarterly spotlight meetings to help identify priority issues for addressing within the management plan's action plans and as budgets allow.



Fig 12

Tennis at Oliver Tambo Recreation Ground was awarded beacon Status by the Tennis Foundation for its affordable organised community activities. Other sports such as basketball and football are also actively encouraged.



Fig 13

Fitness Squad UK are a fitness company specialising in bootcamp style group fitness sessions. They run sessions in Oliver Tambo Recreation Ground 5 days a week. Sessions are run by a qualified instructor with many members of the local community taking part.

<https://www.fitnesssquaduk.com/locations/albert-road-recreation-ground-muswell-hill-london/>

The sports pitches are used for football and Aussie Rules football.

Local football teams Alexandra Park Youth FC and Priory Park FC both use the football pitches for training and matches on a weekly basis.



Fig 14

Aussie Rules Football team, the North London Lions, play their home games at Oliver Tambo Recreation Ground. The club also works hard to support emerging teams outside of the London area and play a leading role in supporting junior development in English schools.

Other groups meet at Oliver Tambo Recreation Ground and undertake regular community activities, including Pushy Mothers, Haringey Tennis League and Three Potato Four.

Local schools use the tennis courts free of charge during the school day and after school.

Rhodes Avenue School: Forest School

Directly bordering Oliver Tambo Recreation Ground is Rhodes Avenue School and within their grounds is a plot of land owned by the Council/Parks Team but managed by the school as a Forest School site.

'Direct contact with nature has direct benefits for children's physical, mental and emotional health.' Lester, S and Maudsley, M (2007)

Rhodes Avenue School believe that children benefit from being outdoors, whatever the weather, to get hands-on experience in the natural environment. Each year group has regular timetabled Forest School/Outdoor Learning either in a half term block or on a rotational basis with other classes in the same year group. Sessions are planned to allow children the chance to learn, explore, challenge, observe, create, build, imagine and play.

Each year children also participate in whole school outdoor learning events such as Den Week. TCV also visit and work with the children to develop their knowledge and skills.

Outdoor learning ties in with many areas of the National Curriculum, perhaps most obviously to science(e.g. studying mini beasts, plants, trees and wild life) but also to geography (e.g. seasons and weather) design and technology (building,

woodcraft) maths (e.g. measuring, estimating) art (e.g. bark rubbings, woodland faces) and literacy (e.g. sessions links to stories like Stick Man or The Billy Goats Gruff).

Skill development:

- Understanding the natural environment: study of flora and fauna – for example learning about a variety of mini beasts, building bug hotels or identifying trees, studying lichen or fungi. Developing an understanding the woodland ecosystem and importance of biodiversity for example through the study of worms and other decomposers.
- Practical skills: using tools, whittling, building shelters, lighting fires, tying knots, campfire cooking.
- Creative development: using the natural environment to inspire and develop creative and imaginative thinking and through natural art, stories and music.
- Personal Social Health and Emotional: allowing opportunities to evaluate and take appropriate risks, challenge and conquer fears/anxieties about the natural world (e.g. dirt, spiders!) work successfully in groups, negotiate, problem solve, work independently and self-direct learning and development according to interests.
- Keeping safe: learning to identify and act appropriately in response to hazards, both natural (e.g stings, nettles) and man- made (fire, tools).

Outdoor Learning takes place in all weathers with the exception of high winds for safety reasons. Some of the best fun has been had in rain and snow!

“It’s more of an adventure when it’s raining!” Year 4 pupil.

8. Conservation and Heritage

8.1 Biodiversity and the Biodiversity Action Plan (BAP)

The term biodiversity refers to the variety of life around us, including plants, animals and the ecological interactions that take place in our environment. Haringey supports a wide diversity of wildlife and habitats ranging from woodland and wildflower meadows to ponds, streams and wetlands.

Haringey's Biodiversity Action Plan (BAP) is currently under review. During 2019-20 a new BAP will be produced, aligned with the new Parks and Open Spaces Strategy. The new BAP will include detail on priority habitats, development of high value ecological corridors and the integration of biodiversity conservation into wider council initiatives.

Priorities within the BAP will help support updating or developing Conservation Action Plans for parks in Haringey. See section 8.4.

8.2 Habitat representation and nature conservation interests

Oliver Tambo Recreation Ground covers 6.62ha of green space with a range of habitat types represented. Table 6 sets out the different types of habitat.

Table 6: Habitat types in Oliver Tambo Recreation Ground

Habitat type*	Coverage (%)	Coverage (ha)
Amenity grassland	64.7%	4.28ha
Scattered trees	12.0%	0.80ha
Bare artificial	8.2%	0.54ha
Shrubbery	6.0%	0.1ha
Non-native hedging	4.1%	0.27ha
Semi-improved grassland	3.0%	0.20ha
Rough land	2.0%	0.13ha
Standing water	<1%	<0.01ha

Note: Habitat type defined as per the London Survey Methodology. See www.gigl.org.uk for information.

Of key nature conservation interest is a row of old oaks and hornbeams (*Carpinus betulus*), interspersed with hawthorn (*Crataegus monogyna*), along the northern edge of the recreation ground. This is probably a relic of an ancient hedge and adjoins the new conservation and pond area created in recent years.

8.3 Designation status

Natural England and Local Authorities have a system of designating greenspace depending on certain characteristics and their value - locally, regionally and nationally. Oliver Tambo Recreation Ground is:

Designation	Information
Local SINC (Site of Importance for Nature Conservation)	Areas of rough grassland and birch woodland as well as fine mature oak trees and relic of ancient hedge.

There are additional designated sites close to Oliver Tambo Recreation Ground (Table 7)

Site	Area (ha)	Location	Designation
Rhodes Avenue Spinney	0.60ha	Adjacent to site to South-west	Local SINC (Site of Importance for nature conservation)
Tunnel Gardens	2.43ha	North-west of site	Borough Grade II SINC (Site of Importance for nature conservation)
Scout Park	3.44ha	North-west of site	Borough Grade I SINC (Site of Importance for nature conservation)
Bluebell Wood and Muswell Hill Golf Course	38.37ha	North and North-east of site	Borough Grade I SINC (Site of Importance for nature conservation)
Alexandra Park	76.83ha	South of site	Borough Grade I SINC (Site of Importance for nature conservation)

8.4 Conservation Action Plan (CAP)

Conservation Action Plans (CAP) provide a framework for ongoing management of sites for their biodiversity value. They provide guidance on conservation actions and activities that can be carried out throughout the year and form a basis for the conservation work of TCV, Friends groups and other community organisations.

CAPs detail site specific opportunities as well as supporting borough wide conservation efforts and requirements, such as contributing to habitat creation targets or demonstrating the positive management of SINCs.

With the development of a new Biodiversity Action Plan during 2019-20, existing CAPs for parks will be updated to ensure they are aligned with the new BAP. They will detail conservation actions and requirements, including maintenance, enhancement opportunities and potential future projects.

There is a CAP in place for Oliver Tambo Recreation Ground which can be found on pages 38 to 42. This continues to form the basis for conservation activities within the park and will be updated to reflect new priorities, actions and projects.

To date, key actions delivered under the existing CAP at Oliver Tambo Recreation Ground include:

- Woodland bulb planting
- Hedge creation and infilling
- Tree planting
- Pond creation and wildlife garden improvements.

To date, there are a range of actions undertaken to preserve and enhance the biodiversity value in ARR. The Conservation Action Plan (CAP) developed by TCV has provided a framework for these actions.

Once updated the new CAP will be referenced in this management plan and will provide detail of seasonal conservation requirements, volunteer actions and wider conservation opportunities.

Grassland Habitats (Fig 15)



G6. Wildflower meadow

- Monitor fauna & flora and produce interpretation boards for wildlife area's
- Scarify turf heavily annually. Dec/Jan
- Cut a 2 mtr wide grass path through the meadow to the pond. Mow regular
- Sow summer wildflower seed and/or plant plugs if required. April-May
- Introduce Yellow Rattle to control pernicious grasses. April-May
- Cut 75% in late Sept/Oct after perennial flowering has died back.
- The remaining 25% cut back early spring.
- Rotate this pattern over 4 year cycle. Rake off cuttings

G1, G2, G3. Long grass strips.

- Monitor fauna & flora and produce interpretation boards for wildlife area's
- Allow 2 metre wide strip of no mow long- grass border and Introduce wildflower perennials
- Cut 75% in Sept/Oct when perennial seeds have set and the remaining 25% in March/April.
- Monitor fauna and flora throughout the growing season.
- **G7:** Reduce mowing to once every 4 weeks to produce a softer gradient into the woodland

G4. Herb rich grassland.

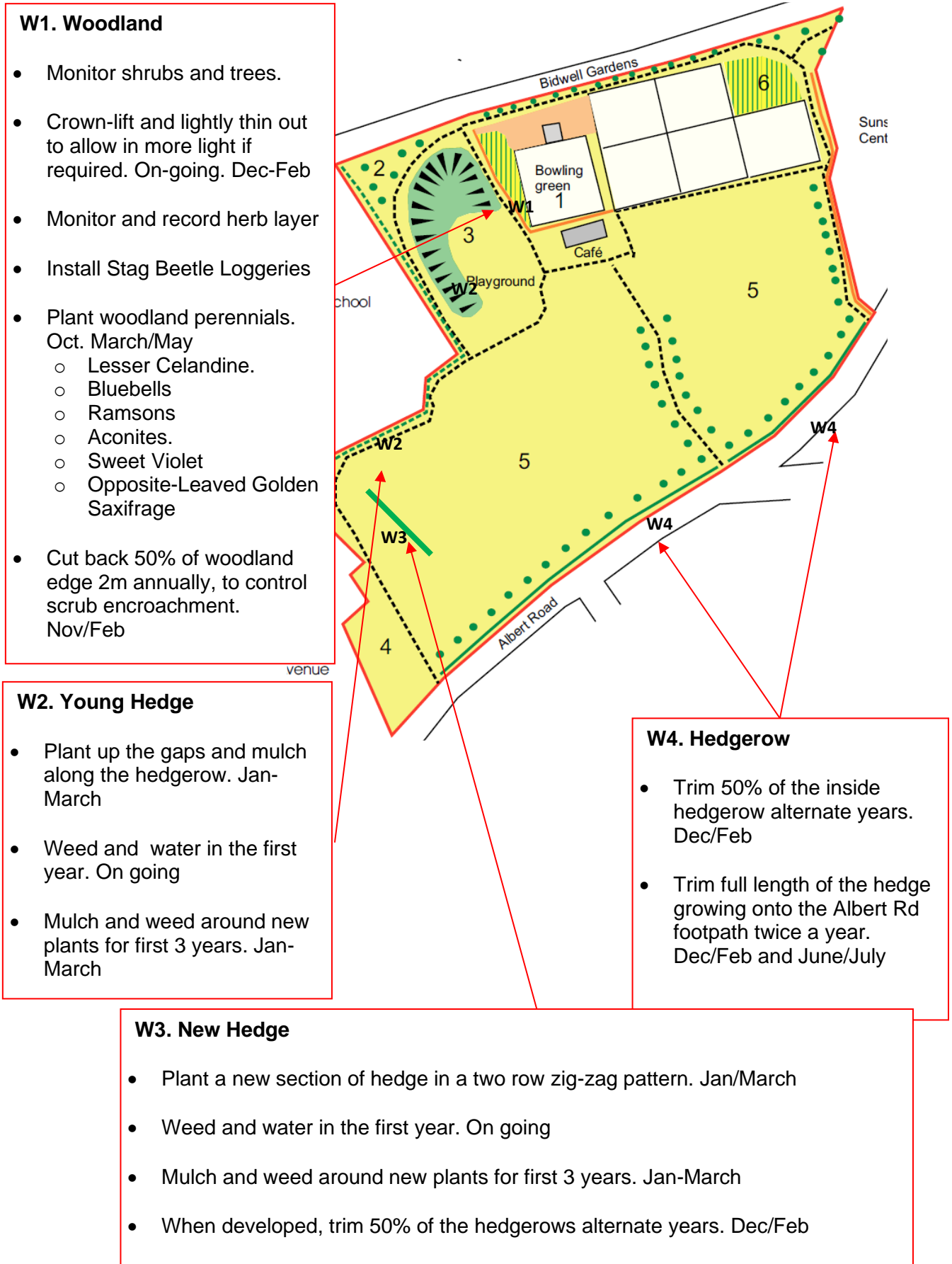
To allow the development of the low growing lawn perennials

- Reduce mowing to every 4 weeks. Raise cut height to 5-7cm

G5. Woodland Pasture

- Scatter bulbs over lawn areas and plant in situ: Oct/Nov
 - Winter/spring flowering Crocus.
 - Snowdrops.
 - Grape Hyacinths.
 - Anemone blanda.
 - Primroses
 - Daffodils
- Monitor Fauna and flora. On-going
- Mow between May and Oct

Woodland Habitats (Fig 16)



W1. Woodland

- Monitor shrubs and trees.
- Crown-lift and lightly thin out to allow in more light if required. On-going. Dec-Feb
- Monitor and record herb layer
- Install Stag Beetle Loggeries
- Plant woodland perennials. Oct. March/May
 - Lesser Celandine.
 - Bluebells
 - Ramsons
 - Aconites.
 - Sweet Violet
 - Opposite-Leaved Golden Saxifrage
- Cut back 50% of woodland edge 2m annually, to control scrub encroachment. Nov/Feb

W2. Young Hedge

- Plant up the gaps and mulch along the hedgerow. Jan-March
- Weed and water in the first year. On going
- Mulch and weed around new plants for first 3 years. Jan-March

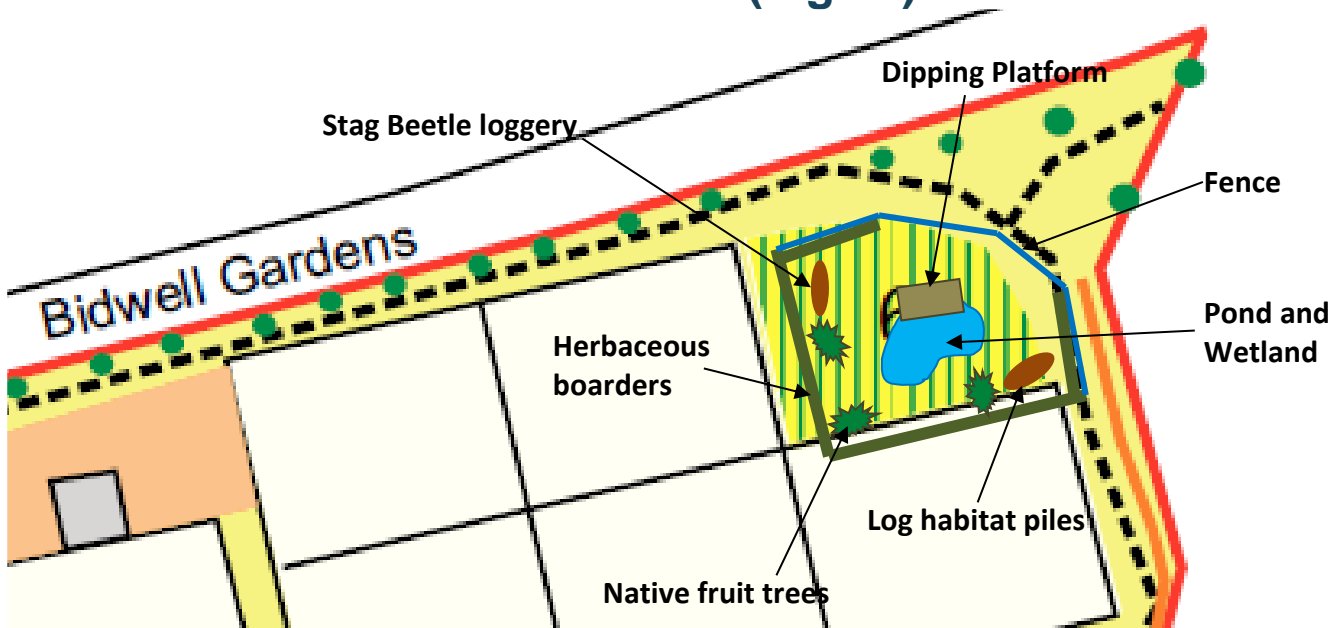
W4. Hedgerow

- Trim 50% of the inside hedgerow alternate years. Dec/Feb
- Trim full length of the hedge growing onto the Albert Rd footpath twice a year. Dec/Feb and June/July

W3. New Hedge

- Plant a new section of hedge in a two row zig-zag pattern. Jan/March
- Weed and water in the first year. On going
- Mulch and weed around new plants for first 3 years. Jan-March
- When developed, trim 50% of the hedgerows alternate years. Dec/Feb

Wetland Habitats (Fig 17)



Wildlife Pond & Wetland Garden

- Create a pond and associated wetland. Ensure that part of the edge of the pond blends into a semi-wild area to allow animals to visit in safety.
- Stock with clean native aquatic species only. March/June
 - **Free floating oxygenators;** Water crowfoot, Water milfoil, Hornwort, Curled pondweed, Water starwort
 - **Floating leaved plants;** Fringed water lily, Amphibious bistort, Water soldier, Frogbit, Broad leaved pondweed,
 - **Marginal's;** Flowering rush, Water plantain, Brook lime, Yellow iris, Arrowhead, Marsh Marigold
 - **Marsh plants;** Meadowsweet, Water figwort, Purple loosestrife, Soft rush, Valerian, Ragged robin, Pendulous sedge
- Construct a dipping platform
- Construct a post and rail fence and gate.
- Plant borders of native perennial wildflowers. Oct/Nov - March/April
 - Golden rod, Sainfoin, Meadow Cranes-bill, Lavender,
 - Hop trefoil, Hedge woundwort, Stinking iris
 - Wild strawberry, Salad burnet, Common Agrimony
 - Common Storks-bill, Stinking hellebore, Vipers bugloss
 - Ox-eye daisy, Tansey, Marjoram, Primrose
- Plant, water and mulch native fruit trees to give the pond some dappled afternoon shade.
- Weed and water in the first year. On going
- Mulch and weed around trees for first 3 years. Jan-March
- Install a Stag Beetle Loggery and log habitat pile
- Install interpretation board
- Monitor and record frogspawn, toad spawn and adult amphibians in the pond. February /May
- Remove any rubbish from the pond as soon it is noticed
- Clear marginal plants spreading into the centre of the pond from its 'invading front', on the inner side of the margin. This leaves the landward side as undisturbed habitat. Nov/Jan. Leave the dead stems and leaves of the marginal's over winter
- Check dipping platform, to make sure it remains safe. Replace any damaged decking. Keep gate and in good repair. On-going

Grassland Management Timeline						
Activity	Plant and Sow wildflower perennials and seed	Scarify wildflower meadow	Bulb planting	Cut summer flowering meadow and long grass strips, rake off cuttings	Monitor and record plant species	Monthly mowing
January		G6				
February						
March				25%, G1,G2,G3,G6		G4, G7
April	G6			25%, G1,G2,G3,G6		G4, G7
May	G6					G4, G7
June						G4, G7
July						G4, G7
August						G4, G7
September				75%, G1,G2,G3,G6		G4, G7
October			G5	75%, G1,G2,G3,G6		G4, G7
November			G5			
December		G6				

Table 8

Woodland Management Timeline								
Activity	Hedge and shrub planting	Mulch and weed along hedgerows	Plant perennials and bulbs	Monitor and record ground flora. Inspect Trees	Tree & Shrub pruning	Trim 50% Hedgerow alternate years	Building stag beetle loggeries and other habitat piles	Monitor and record Butterflies
January	W2,W3	W2,W3			W1	W4	W1	
February	W2,W3	W2,W3			W1	W4	W1	
March	W2,W3	W2,W3	W1			W4	W1	
April	water		W1					
May	water		W1					

June	water	W3, Weed					
July	water	W3, Weed				W4, front	
August	water						
September	water					W1	
October	water		W1, bulbs			W1	
November			W1, bulbs			W1	
December		W2, W3			W1	W1	

Table 9

Wildlife Garden Management Timeline											
Activity	Construct Fence and gate	Build pond and wetland area	Build dipping platform	Monitor frogspawn, toad spawn, adult amphibians in the pond	Monitor free-floating, floating-leaved rooted plants and remove excessive growth	Plant perennials and Trees	Mulch and weed	Stock pond with plants	Monitor and maintain the fence and dipping platform and repair if required	Clear marginal plants spreading on the inner side of the pond	Dig out accumulated silt
January						Trees					
February						Trees					
March						Trees					
April											
May											
June											
July											
August											
September											
October											
November											
December											

Table 10

8.5 Site history and heritage

8.5.1: Site history

A century ago Durnsford Road did not exist, however, Albert Road with a brook running along the bottom edge of the land did. Locally there was no housing nearby, but not too far away was a clay pit and a works known locally as the brickworks, which was in operation until the first part of the 20th century.

The land on which Oliver Tambo Recreation Ground now lies used to be an informal open space, which locals used in the early 1900s for recreation. When the recreation ground was officially formed in the early 1900s, it was half its present size with the main gate

near what is now Clifton Road. Oliver Tambo Recreation Ground was later extended to its present size and in 1925 a combined tennis and bowling club with a small pavilion (that was later extended) was built, and mini golf added. There was a small café operating before the Second World War, but it closed soon after the war ended.

In the 1920s Durnsford Road was built and in the early 1930s the lido was constructed, which was very modern for its time. Film of residents enjoying the facilities can be found in the BBC archives. The pool was bombed during the war and later restored, but it eventually fell into disrepair and closed in the 1980s. In 1991 the old lido was bought by the Sunshine Garden Centre which has since transformed the area and has become active in supporting and sponsoring park activities in the borough.

Sporting facilities for both children and adults have always been part of Oliver Tambo Recreation Ground's role as a neutral public place and continue to do so. The Friends Group organises events in partnership with the Council. The Pavilion Café provides clean changing and toilet facilities and a warm welcoming café. Pavilion Tennis, leaseholder of the café, has ensured a renewed interest in the tennis courts with coaching available for all ages and abilities.

8.5.2: Oliver Tambo memorial

An Oliver Tambo memorial was introduced to Oliver Tambo Recreation Ground in 2007.

On 27 October 2019, a date that reflected not only what would have been Oliver Tambo's 102nd birthday but also 25 years of freedom for South Africa, a new life-sized and lifelike statue was unveiled at a ceremony led by the South African High Commissioner (Thembi Tambo), the South African Ambassador, a number of other South African dignitaries along with dignitaries from Haringey including the Mayor, the Leader and former MP, Baron Paul Boateng.



27 October 2019: The unveiling of the Oliver Tambo statue with the South African High Commissioner (Thembi Tambo), the Ambassador (, and Baron Boateng.



South African singers and dances at the unveiling ceremony, 27 October 2019

Further changes to the park, to better set the scene for the statute and make a safer and wider entrance, a memorial garden, as well as a series of events and activities planned with the local schools and community, are planned subject to further fundraising both by Haringey Council and the South African High Commission.

There is also a proposal to rename the park to reflect the importance of Oliver Tambo and his work to fight apartheid in South Africa and racism globally.

Oliver Tambo lived in Haringey with his family and were regular visitors to Oliver Tambo Recreation Ground.

8.5.3: Queen Elizabeth 11 Award

In November 2011 as part of the preparations for Her Majesty the Queen's Diamond Jubilee, Fields in Trust (formerly National Playing Fields Association - NPFA) launched a campaign to protect 2012 outdoor recreational spaces in communities all across the country as a permanent living legacy of this event.

The scheme is similar to those run in the past that created the King George V playing fields which can be found in many towns. Through a deed of dedication the site is protected in perpetuity from future development. Nominations were sought from local authorities for recreational spaces in their area.

Haringey put forward four sites:

- Oliver Tambo Recreation Ground, N22 – (624 votes)
- Lordship Recreation Ground, N17 – (221 votes)
- Down Lane Recreation Ground, N17 – (153 votes)
- Muswell Hill Playing Fields, N10 – (413 votes)

Approximately 800 parks across the country were nominated for QEII status – protection in perpetuity. 10 London boroughs nominated a total of 27 London parks.

A public vote on the nominations was carried out under the title of ‘Save a Space for Me’.

Oliver Tambo Recreation Ground in Haringey received the second highest number of votes in the country and in London (624).

Legal steps have now completed the official dedication of Oliver Tambo Recreation Ground. Fields in Trust has provided a plaque which now sits on the wall of the Pavilion.

8.5.4: Fields in Trust UK Awards

In November 2012 Oliver Tambo Recreation Ground was declared the UK national winner in the ‘Getting Most Active Park’ category of the Fields in Trust inaugural national awards.

The Award recognises the need to increase participation in sport as part of the wider Olympic legacy and rewarded Oliver Tambo Recreation Ground for its achievements in increasing activity in tennis and football for men, women and juniors and encouraging people to participate in basketball, running clubs, an outdoor gym and netball sessions.

The Fields in Trust Awards celebrate and reward the overall achievements of local community volunteers, local authorities and organisations who have helped safeguard in perpetuity outdoor recreational space across the country.

Oliver Tambo Recreation Ground was also the UK national joint runner up in the ‘Most Loved Park’ category.

Peter Droussiotis (Chair of FORTR in 2012) said: ‘Thanks to the combined efforts of FORTR and of our key partners, notably the Pavilion Sports & Café and Haringey Council, and the work of so many dedicated volunteers, and because of the support of the local community, which has championed this park at every opportunity, we have secured yet another important national recognition for our local park.

‘This is a fantastic level of success for a relatively small park in this National competition and feels like a true reflection of the spirit and energy of all those involved. Well done to all.’

The Awards were collected by a FORTR delegation comprising Robby Sukhdeo (FORTR Events Co-ordinator and Manager of Pavilion Sports and Cafe), Gianluca Lo Iacono (FORTR treasurer/Webmaster), Tony Healey (FORTR Committee Member and Haringey Council Park’s Deputy Manager) and Neil Armstrong (Haringey Council Park’s Operative).

9. Marketing and communications

9.1 The marketing approach

Marketing Oliver Tambo Recreation Ground involves more than simply publicising and promoting the park, it also involves listening to the users of the park. Our main aim is to put the needs and concerns of stakeholders, park users and residents at the centre of business marketing approach.

This section outlines how facilities and activities at Oliver Tambo Recreation Ground are promoted and publicised and how users are positioned at the centre of the business.

9.2 Websites

www.haringey.gov.uk/greenspaces

The Haringey website contains extensive information on the borough's parks and open spaces, including Oliver Tambo Recreation Ground. Information such as location, facilities and transport links for all Haringey parks and open spaces is available.

Policy information such as the Parks and Open Spaces Strategy which draws upon a range of information and seeks to establish a long- term vision for the borough's parks and open spaces is also available.

Information detailing the Council's partnerships with Friends Groups, The Conservation Volunteers and the Metropolitan Police is available online along with links to their websites.

Detailed information on the Green Flag Award with clear links to the Green Flag park pages within the LBH site can be viewed.

Stakeholders of the park such as the Friends also maintain a website/Facebook page: <https://psandc.co.uk/FORTR/>

9.3 Social media

Social Media is now a regular way of communicating information between relevant parties and beyond. Haringey Council encourages all partners to use social media when communicating with communities.

[@haringeycouncil](https://twitter.com/haringeycouncil)

Haringey Council has a Twitter feed with just under 17,000 followers and is used as a two-fold approach: to proactively release live information to keep people informed and updated and respond to queries and complaints posted by others. This is checked throughout the day and provides residents and visitors with another communication channel.

The Council also uses other forms of communication such as Facebook and YouTube.

www.facebook.com/haringeycouncil

www.youtube.com/haringeycouncil

We also like to keep our resident's in the loop about the events that are taking place, and regularly ask that stakeholders and park hirers submit details about their event on the Council website for FREE, on our "What's On" listings section at

www.haringey.gov.uk/add-event

The Friends of Oliver Tambo Recreation Ground have a website that can be found at: <https://psandc.co.uk/FORTR/#>, plus have a Facebook page at: <https://en-gb.facebook.com/Pavilion-Sports-and-Cafe-291826137496886/>

9.4 Publications

Haringey People is the Council magazine, distributed six times a year by direct mail to all households within the borough. The magazine is produced by the Council's Central Communications Team which has editorial control over the content.

<https://www.haringey.gov.uk/news-and-events/haringey-people-magazine>

Several articles are published each year promoting the borough's parks as well as the work and events that key stakeholders and partners organise in parks throughout the year.

9.5 Notice boards

There are two notice boards located at Oliver Tambo Recreation Ground. These are located at the Pavilion entrance and the Winton Road entrance. These are used to display information about the Friends and Council services and/or campaigns and events.

In 2014 a set of guidelines detailing how notice boards within parks should be used, maintained and what information can be displayed were issued with the expectation that all those with an interest and access to the notice boards will adhere to them.

In 2019 we developed a simple A2, updateable poster that gives key contact information for council and other public services.

9.6 Campaigns

There are several national campaigns that Haringey Council support and promote via social media to highlight key issues affecting the borough's parks and open spaces. These include:

Litter awareness campaign – encouraging users to dispose of their litter responsibly.

Neighbourhood Watches – encouraging creation of new watches and increased membership

Trees Awareness – aimed at highlighting tree planting, tree identification, maintenance and removal and why. Along with National Tree Week.

Volunteering and Friends Groups – promoting the work groups do, the benefits they bring to communities and encouraging volunteering

Love Parks Week – Encouraging stakeholders and Friends to promote and highlight the borough's parks and the events that they put on.

The Big Lunch- supporting and promoting via social media the Big Lunch events happening across the borough, with focus on shared picnics in our parks and green spaces.

The Great Get Together- supporting and promoting the national campaign to celebrate and promote community cohesion. We have streamlined the application form for this event to make it even easier for residents and park users to take part.

Play Weekend- supporting the Play Streets initiative to encourage more active play within communities

Playday- supporting the National Summer event to promote active play for children, young people and families. We work closely with our colleagues in the Active Communities Team to support community involvement and uptake.

9.7 Awards

In 2021 a total of 22 parks managed by Haringey Council were awarded Green Flag status, an external recognition for quality parks and open spaces. Oliver Tambo Recreation Ground was one of these.

Haringey Council is committed to the Green Flag scheme and is seeking to secure Green Flag status for at least 22 parks in 2022.

More information about the myriad of tennis, football and community cohesion awards that Oliver Tambo Recreation Ground and its key stakeholders have won over the last 17 years can be found on Pavilion Sports & Café website. The former Executive Director of the Tennis Foundation (Sue Mappin) said of Oliver Tambo Recreation Ground 'It's a great example of a park that used to suffer from anti-social behaviour being transformed into a fantastic community facility'.

The Pavilion Sports café have helped secure the following awards for Oliver Tambo Recreation Ground:

- 2008 - British Tennis Park of the Year National Award
- 2014 - Fields in Trust - Most Active Park of the Year Award
- 2015, 2016, 2017 - British Tennis Community Venue of the Year for Middlesex & South East Region

9.8 Tree and bench sponsorship

A sponsorship scheme is provided where members of the public can sponsor the planting of a tree or the installation of a bench in any Council run park and open space. This can be done to commemorate a loved one or an event.

The sponsor pays for the item and planting / installation, thereafter the Council maintains it subject to certain conditions. Should sponsors wish to, they can also help in maintaining their item.

9.9 Consultation and market research

Haringey is committed to listening to the views and ideas of our stakeholders, park users and residents. Council officers attend the Friends of Parks Forum on a bi-monthly basis and maintain open channels of communication with key stakeholders. This is a good way to listen to concerns and engage in a constructive dialogue about individual parks.

When planning any new project work within parks, we make sure that key stakeholders are included in discussions from the beginning of the process and where possible hold open engagement sessions so we can listen to the thoughts, needs and concerns of the wider park community.

Budget cuts have hit our capacity to undertake regular surveys of park users. We include a question about satisfaction with parks in a borough-wide survey about environmental and waste services. The survey is commissioned by Veolia.

In 2018, four in five respondents to the survey (80%) said that they were satisfied or very satisfied with parks. This is slightly down from 2016 (81%) but in 2018 parks was the service with the environmental and waste service with the highest satisfaction rating.

We are aware that we need more knowledge of user satisfaction with individual parks and local people's priorities for their local park. We are planning to survey park users in 2019-20 to ensure that we are working in the right direction for users and in line with the priorities and outcomes of the Borough Plan.

10. Management

10.1 Setting the financial scene

The parks service gross budget for 2017/18 was a total of £5.1m with a revenue income of £4.5m and operated a net deficit of £600k. According to a survey by Parks for London this represents the second lowest operating deficit in London.

Whilst the service has borne its share of austerity related budget reductions, in recent years the service has chosen to focus on generating additional income to mitigate these reductions rather than impact service delivery on the ground. The service has managed this by growing the amount of income generated through: -

- Increasing the number of park properties let
- Increasing the number paying a market rent,
- Growing the number of commercial events
- Growing the level of filming income
- Increasing the range of services offered to other organisations

A breakdown of the 2017/18 revenue budget is set out below: -

a) Revenue Expenditure – Employees, Premises, Transport, Supplies and Services, Third Party Payments, Support Services etc

a. Total Parks expenditure	£5,142,184
b. Employees	£2,665,995
c. Premises related expenditure	£534,054
d. Transport related expenditure	£144,885
e. Supplies and Services	£398,471
f. Third Party Payments	£662,463
g. Support Services	£583,987
h. Capital Charges	£152,330

b) Revenue Income - Customer and Client Receipts, Recharges etc

a. Total Revenue Income	£4,467,442
b. Customer and Client Receipts	£3,753,447
c. Recharges	£713,995

The council seeks to secure external investment from a number of sources. The council has its own ten-year capital strategy which currently includes over £11m of capital funding for parks. The service seeks to add to this sum and has secured further investment from the following sources over recent years:

Section 106
 Community Infrastructure Levy
 National Lottery
 London Marathon Charitable Trust
 Environmental Funds

Greater London Council Event Income

Another important part of the overall funding mix is the fundraising carried out by Friends Groups across the borough. A wide variety of groups have been able to secure funds to deliver the priorities they identified. In 2017/18 the council directly invested the following amounts: -

c) Capital Expenditure – names of Capital schemes and expenditure on each scheme.

a. Park Asset Management	£377,288
b. Active Life in Parks	£263,477
c. Parkland Walk Bridges	£126,780

The Council continues to face significant financial challenges with many millions of pounds of savings to find over the coming years. A goal therefore for the service over the coming years is to maintain a stable budget position and continue with a strategy to generate additional income.

10.2 Management structure

The Parks Service sits within the Environment and Neighbourhoods Directorate and is overseen by the Director and the Cabinet Member for Environment.

The service is organised across Commissioning and Client Services and Operations business units.

Responsibility for the service falls to the respective heads of each business unit and they are supported by two commissioning managers and a parks manager.

The structure chart in section 4.1 shows the three core strands of the parks service which are:

- Park Operations Team – this team takes the lead on all day to day operational aspects of maintaining each green flag park.
- Active Communities Team – this team takes the lead on all event management, community activation in the park, partnership working and small grant awards. This team also secures sport related external funding
- Public Realm Team – this team takes the lead on asset management, investment in parks, policy development, nature conservation and arboriculture.

These three core teams are supported internally by colleagues across Community Safety and Enforcement, Planning Services, Regeneration, Adults and Children's services on a variety of issues from homelessness, to new cycle routes, to improvement in existing green spaces and access and activities for older and young people.

External support for the service comes through the Friends Forum, our partners within the Police and The Conservation Volunteers alongside organisations such as Parks for London, Keep Britain Tidy and APSE.

10.3 Borough Plan 2019-2023

Following the local elections in May 2018 the new council and its partners have developed a Borough Plan setting out their vision and priorities for the next four years. Following extensive public consultation, it was agreed by Cabinet in February 2019.

The plan sets out the council's priorities and the outcomes it seeks to achieve. Outcome 10 of the plan is for "a healthier, active and greener place". The plan places importance on the role of parks and open spaces in delivering this outcome through four objectives.

Objective 10a is to "Protect and improve parks, open space, and green space, promoting community use".

The Plan identifies several ways in which this will be achieved:

- Continue with partners to invest in our parks with over £15 million of improvements planned over the next five years, including new playgrounds and sports facilities.
- Develop a new Parks and Open Spaces strategy and consult with partners and local communities about how we will work together to protect, enhance and, where possible, extend green and open space in Haringey.
- Promote the use of our parks for a wide range of events and activities, including more community use.
- Plant more trees to make our streets and open spaces greener.
- Work with partners, including Environmental Community Groups, to maintain the borough's watercourses, maximising their environmental and health benefits

Parks are also important in delivering Objective 10b of the plan. It is to "increase the levels of physical activity across the borough" by "creating healthier places, including parks and open spaces, in line with the Mayor of London's Healthy Streets plan..."

However, we cannot achieve the priorities in the plan on our own. We trust that our partners locally and our residents will work together with us on achieving them.

The Borough Plan 2019-2023 can be found at:

https://www.haringey.gov.uk/sites/haringeygovuk/files/borough_plan_2019-23.pdf

10.4 Parks and Open Spaces Strategy

The last open space strategy was adopted in 2006.

Work has begun on developing a new strategy for parks and open spaces. The importance of a new parks and open spaces strategy is underlined by the explicit reference to it in Borough Plan 2019-2023.

The new strategy will build on the Parks Scrutiny Review that took place in March 2018. It will be co-produced with Friends, residents and councillors. As part of the process there will be a series of workshops and a period of public consultation.

The strategy will set out the ambitions for the service over the next 15 years. It will set out approaches to the maintenance, management and usage of parks. It will also set out clear policy positions on issues relating to parks and open spaces. In some cases new policies will need to be developed (such as security in parks and licensable activity).

The strategy will also describe the funding landscape. One key element of this will be to balancing revenue funding for the service against the agreed service standards. It will also provide a context to inform the long-term capital strategy including mapping out the external funding opportunities that can be used to the benefit of the service

The timetable is for a draft 15-year strategy to have been agreed, following public consultation and for Cabinet to agree the document in January 2023.

10.5 The Greenest Borough Strategy

Haringey's Greenest Borough Strategy responds to growing concerns around climate change. The Strategy sets out the Council's and its partners commitment to tackle climate change under a number of key environmental policies to ensure achievement of their 'green' vision over a ten year period, and details what the council, its partners and the public can do to contribute.

More information can be found here: www.haringey.gov.uk/greenest-borough

10.6 The Health & Wellbeing Strategy

This strategy aims to reduce health inequalities through working with communities and residents to improve opportunities for adults and children to enjoy a healthy, safe and fulfilling life, through a number of key outcomes.

Those that specifically relate to parks include increasing physical activity and improving health and mental wellbeing.

More information can be found here: www.haringey.gov.uk/hwbstrategy

10.7 Finance and funding

The revenue budget for Oliver Tambo Recreation Ground sits within the overall Parks Operations.

Capital expenditure on parks and open spaces is planned at a borough level rather than at an individual park level. Match funding and other sources of external funding are sought wherever possible.

Oliver Tambo Recreation Ground will benefit from capital funding to address the new play area, the outdoor gym and works to address the drainage problems.

Options for funding the phase 2 Oliver Tambo memorial proposal will be considered by the Council and its partners.

The FORTR proposal for new lightning in the park, if approved, will be funded through Just Giving cloud funding

10.7.2 Parks and open spaces Small Grant Scheme

The Parks and Open Space Small Grant Scheme has been running for a number of years. The scheme offers community groups associated with parks and open spaces - such as Friends of Parks groups – to bid for funding of up to £1000. The funding is to support and develop community activity to help meet the council's aims and priorities for improving the borough's parks and open spaces. The budget available in 2018/19 was £40,000 and is expected to be £60,000 in 2019/20.

More information can be found here: www.haringey.gov.uk/parkssmallgrants

10.7.3 Events income

At the end of 2013 a review of the parks events policy was conducted to inform and guide changes of how events would take place in the borough's parks, and also realign and invest income from parks events back into park improvements.

Income generated from events in parks and open spaces will be used in the first instance to meet the parks event income target in each year.

The application and booking fees will be utilised to fund the staffing costs of the booking and event management process.

Surplus income will initially be used to support and develop community led festivals and events in parks across the borough and offer training opportunities for community event organisers. £20,000 additional funding will be made available as part of the small grants scheme.

Any additional income generated will be ring fenced to be reinvested back into parks maintenance across the borough. Where significant sums of money are generated in individual parks the reinvestment needs of that park will be addressed first before redistributing the remainder of any funds to other parks.

All applicants to hold event will be charged a fee dependent on their event to cover the cost of the environmental impact on the park.

The environmental impact income will be kept separate from other income received in respect of events. This additional income can be used by the Friends of the park in which the event was held to address their immediate priorities for the park.

11. Improving Oliver Tambo Recreation Ground

A consultation exercise was undertaken in summer 2018 to find out how park users would like to see the play area developed. The outcomes of this were as follows:

- 121 people responded to the survey
- 67% of respondents were from the N22 postal area with a further 25% from N11. In total 80% of respondents visited the play area at least once a week of which 35% came most days
- 74% were female and 26%, 64% were White British, 10% White European and 26% from a wide range of cultural heritage groups
- 79% indicated their main reason for visiting the park was to use the play area, 28% to visit the café, 18% to play sports or socialise
- 57% visited other parks to take their children to play, the most popular being Alexandra Park, Broomfield Park, Stationers Park and Finsbury Park
- 31% of children indicated their favourite things to play on where the swings, 22% preferred the climbing frames, 15% favoured the themed equipment and 11% the car/truck
- 55% of children interviewed were under 5, 39% between 5 and 8 and 6% between 6 and 13 years.
- The top 5 items that people wanted to see in an upgraded play area were:
 - Swings including basket swing
 - Spinning cup
 - Climbing and slides
 - Adventure trail
 - Car/train

During the consultation process it became clear that prior to any replacement or upgrade of the existing play area, works needed to be undertaken to address the long-term flooding issues at the site and to address the damaged wall.

As a result of this feedback we have commissioned a survey and feasibility study to help us understand the drainage issues and what options we have to create play that does not flood. At the time of writing this is a works in progress, and it is hoped that works on the ground to address the flooding and install a new play area can be undertaken in 2019/20 as budgets allow.

Over and above scheduled maintenance operations at Oliver Tambo Recreation Ground, a number of reactive asset improvement works have recently been completed or commissioned:

Heading	Action	Target completion
A welcoming Place	Updating noticeboard information	Ongoing
	Straightening, cleansing and graffiti removal of bins, benches and signage	Complete
	Play area seats repainted	Complete
	Bench varnishing	Complete
A clean and well-	Removal of Christmas tree chippings	Complete
	Addressing grass pitch divots and wear	Ongoing

Heading	Action	Target completion
maintained park		
Healthy, safe and secure	Path repairs to address tripping hazards	Complete
	Play area repairs (risk 12 and above)	Complete
	Play area safety surfacing repairs	Complete
	Lighting repairs, repainting of columns & upgrade to LED	Complete
	Undertook a condition survey of the play area wall	Complete
A sustainable place	Removal of dead trees	Complete
	Re-use of Christmas tree chippings as shrub bed mulch/compost	Complete
	Removal of all dog bins	Complete
	Land drainage surveys and a feasibility study to understand what is causing the pitches and the play area to be regularly flooded and advise on options for resolving this.	Complete
	Land Drainage installed as per survey results-across playing field and from the play area to the main sewer on Albert Road	Complete
	25 trees, 50m whips and shrubs were planted at the site through volunteer action in 2018 to coincide with National Tree Week, part-funded by the Greener Capital Fund	Complete
	Undertook works to address water leaks/damaged drainage pipes	Ongoing: Initial works complete, but further works still required
	Undertook works to address issues such as the state of the paths, MUGA fencing, play area safety surfacing and equipment repairs, removal of obsolete metalwork, repair and repainting of some entrance railings and gates, goal post repainting etc	Complete
Community Involvement	Basketball net replacement & MUGA refurbishment	Complete
	Play area repairs	Complete, but further works planned for spring/summer 2023

Heading	Action	Target completion
	Fencing to 'The Spinney' undertaken by Rhodes Avenue school to make safe and secure the 'forest garden'	Complete
	MUGA fencing and entrance repairs	Complete
	The existing petanque terrain, which had become disused, was given a new lease of life through putting interested parties connected to Priory Park in touch with FORTR	Complete, but subsequently underused
Conservation and Heritage	Discussions with the South African High Commission concerning the scope for a phase 2 Oliver Tambo memorial	Future aspiration, tbc
	Specification, tendering and installation of a new Oliver Tambo statue onto a new concrete base & plinth, followed by a launch event with dignitaries from South Africa and Haringey	Complete
Marketing and communication	Updated noticeboard information	Ongoing
	Straightening, cleansing and graffiti removal of signage	Complete
Management	Allocation of a dedicated member of the Parks & Leisure as a zonal lead for Zone 2, in which Oliver Tambo Recreation Ground sits, with responsibility for regular asset inspections, non-emergency asset repairs, management plan input, project identification, liaison with Friends Groups, Councillor liaison and identification of volunteering opportunities	Complete

Table 1

12. Action Plan

12.1 Maintenance and scheduled work programme

This is a schedule of annual or routine tasks which are neither developmental nor fall within the remit of routine grounds maintenance or hygiene functions

Heading	Action	Frequency	Responsible	When?
Clean and well maintained	Site inspection: asset condition survey	Quarterly	Parks Zonal Manager	Quarterly
	Site inspection: grounds maintenance issues	Monthly	Parks Area Manager	Monthly
	Site inspection: performance monitoring of grounds maintenance works	Monthly	Parks Area Manager	Monthly
	Site inspection: annual boundary check	Annually	Parks Zonal Manager	Annually
Healthy, safe and secure	Play Inspection Company to inspect and risk assess all play and outdoor gym equipment	Quarterly	Play Inspection Company	Jan/Apr/Jul/Oct
Management	Review the Park Management Plan annually	Annually	Parks Zonal Manager	Dec/Jan
Community Involvement	Lead 'Spotlight' meetings in the park with councillors and Friends	Quarterly	Parks Zonal Manager	Quarterly

12.2 Oliver Tambo Recreation Ground development plan

This plans the work we would like to carry out. Budget availability and more urgent unplanned work may mean that it cannot be fulfilled. Other repairs and general maintenance may have to take precedence. The content will be reviewed at least annually at the end of each calendar year.

Table 12

Heading	Action	Priority (H/M/L)	Responsible	Approx cost	Funding source	Target completion
A welcoming Place	Upgrade entrance signage (all entrances)				Parks capital and revenue	As budgets allow, in line with Parks Asset Management Strategy
	Address worn areas under trim trail	H	Park Project Officer (consultation)	tbc	Parks capital and revenue	As budgets allow, in line with Parks Asset Management Strategy
A clean and well-maintained park	Replacement bins & benches with new hard bases underneath	M	Zonal lead	tbc	Parks capital and revenue	Phase 1 completed As budgets allow, in line with Parks Asset Management Strategy
	Refresh/repaint sports courts surfaces, nets & backboards	H	Pavilion & Sport	?	Pavilion & Sport	Completed
Healthy, safe and secure	FORTR proposal for new lighting and CCTV to some key routes	H	FORTR, subject to approval by Lighting team and Parks &	£50k for lighting £25k per CCTV	Community/crowd funding via Just Giving	Subject to funding bids

Heading	Action	Priority (H/M/L)	Responsible	Approx cost	Funding source	Target completion
			Open Spaces team			
	A new play area	H	PPO	£75k		2023/24
	A new outdoor gym	M	PPO	£35k		2023/24
	Bollards or boulders to prevent vehicles driving over the grass on the Bidwell Gardens edge	M	Zonal lead		Parks budgets	Complete
	Tripping hazard identified in paving behind OT bust	H	Zonal lead		Parks budgets	Complete
A sustainable place	Works to address the long-term flooding issues affecting the play area	H	Parks & Open Spaces team	£25k	Parks capital	Complete
	Works to address the long-term flooding issues affecting the grass pitches	M	Parks & Open Spaces team	£400k	Parks capital, revenue and other sources, tbc	Subject to budget availability
	Work with Alexandra Park School to resolve surface water run off issue	H	APSchool, Flood and Drainage Team (Highways) Parks	Nil/Officer Time	n/a	Ongoing
	Identify scope for encouraging recycling and reducing waste within the park	L	PPO, Park Operations	Nil	n/a	Ongoing
	Review use of chemicals as part of new parks and green spaces strategy	H	PPO, Park Operations	Nil	n/a	2023

Heading	Action	Priority (H/M/L)	Responsible	Approx cost	Funding source	Target completion
Community Involvement	4x TCV sessions throughout the year	M	NCO/TCV			Ongoing
	Planting of 6 new boundary trees and a new orchard on the Rhodes Avenue School boundary via the Friends	H	FORTR		Friends fundraising	Complete
	Continuing to build and develop stronger links with the South African High Commission	H	FORTR			Ongoing
	'Ageing Well' pilot scheme to work with older people in the park, starting with a survey. This will include improving the bowling green (resurfacing with artificial grass), further developing petanque (in conjunction with new petanque provision at priory park) and improving the marquee to provide warmer//drier indoor space for eg Tai Chi, PI	H	Parks & NHS & Friends/Pavilion & Sport		tbc + Friends/Pavilion & Sport	Ongoing
Conservation and Heritage	Phase 2 Oliver Tambo memorial, including entrance changes, renaming of the park and schools/community events/activities	Subject to funding and political decisions	Partnership with Oliver Tambo memorial working group/South	£260k - £350k	Mixture of Council capital (yet to be agreed) and other funding sources yet to be identified, including	2023 subject to budget availability

Heading	Action	Priority (H/M/L)	Responsible	Approx cost	Funding source	Target completion
			African High Commission		contributions via the South African High Commission	
	Repairs to the vandalised Oliver Tambo statue	H	Parks	£2k	Parks/Green Flag	Complete
	Renaming of the park to honour Oliver Tambo	H	Corporate	?	Council	Complete
	Biodiversity: Bird & bat boxes to be added where appropriate	M	NCO	£100	NCO resources plus friends fundraising	As NCO budgets and programmes allow
	Biodiversity: Bird and animal lists to be prepared for the site	M	NCO	n/a	NCO resources plus Friends support	As NCO programmes allow
Marketing and communication	All site signage to be upgraded to reflect new corporate style	M	Zonal lead	tbc	Parks capital or revenue	As budgets allow
	Make more of the Forest School as part of the park	M	NCO	?	NCO resources plus school support	As NCO budgets and programmes allow
Management	Commence using ConfirmConnect for site inspections, once back-office set-up is complete	H	Zonal lead/IT	?	Officer time & IT team time	2022
	Recruit and appoint a new Nature Conservation Officer	H	Trees, Allotments & Nature		Trees budget	Complete

Heading	Action	Priority (H/M/L)	Responsible	Approx cost	Funding source	Target completion
			Conservation manager			
	Recruit Parks and Greenspaces Volunteering Officer	H	Events and Partnership Manager	Revenue		Complete
	Recruit Community Engagement and Partnership Officer	H	Events and Partnership Manager	Revenue		Complets
	Drafting, consultation & roll-out of the new Parks restructure	H	Head of Parks & Leisure	tbc	Officer time and revenue budget tbc	Complete
	Drafting, consulting, writing and adopting of the new Parks & Green Spaces Strategy, including all its supporting documents such as the Parks Asset Management Plan, the Trees & Woodlands Plan, the Watercourse & Flood Risk Plan, the Biodiversity Action Plan, the Volunteer & Community Engagement Plan, the Workforce Development Plan plus a number of Policies and Service Standards.	H	Head of Parks & Leisure and all of the Parks & Open Spaces Team	?	Officer time and revenue funding	2023

The Friends and stakeholders of Oliver Tambo Recreation Ground were asked what their top 3 priorities would be for the park. Their responses are captured below:

Friends of Oliver Tambo Recreation Ground	1: Lighting (will be crowd-funded)
	2: Playground upgrade (including resolve flooding)
	3: Upgrade sports pitches (including resolve flooding)
Alexandra Park School	1: Drainage: The pitches in the park cannot be used. It is so wet and even when they dry out (sometime in the late spring) the surface is damaged by these prolonged wet spells.
	2: Maintenance/Litter: There are more than 2,500 children coming to and leaving from Rhodes Avenue and Alexandra Park School each day. The few bins we have are inadequate and my own site team empty them on a regular basis. When bins are few and/or full – litter gets dropped. Poor Maintenance and Litter can lead to increased anti-social behaviour.
	3: Ecological value: A pond went in recently – all very good but not as useful in isolation. Increased area of semi wild sections – long grass, flowers, logs, shrubs add a few more sections of hedgerow etc.
Rhodes Avenue School	1: Tree regeneration – we had a three year programme to tree care and now we move into the final and most exciting stage of new planting. British native trees will be planted into our woodland.
	2: Vegetable growing – linking with local charities to provide home grown produce from seed to plate.
	3: To enable local users to have access to the space with taught lessons and direct learning

