

Make a Zulu Hat

Inspired by the designs of Zulu hats, also known as Isicholoor Inholku (in Eastern and Southern Africa). In many African cultures, hats represent an extension of traditional hairstyles and can signify cultural, social, and personal meanings.

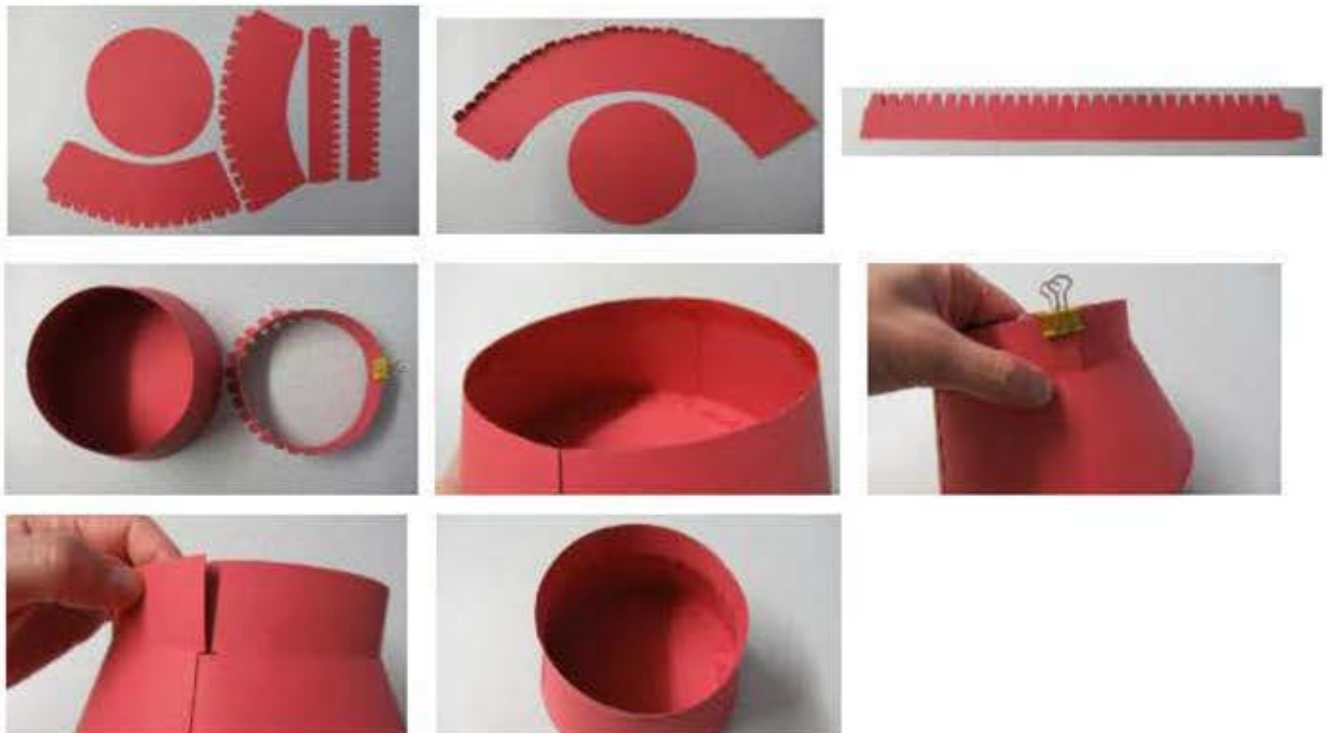


Design your own Zulu hat!

You will need:

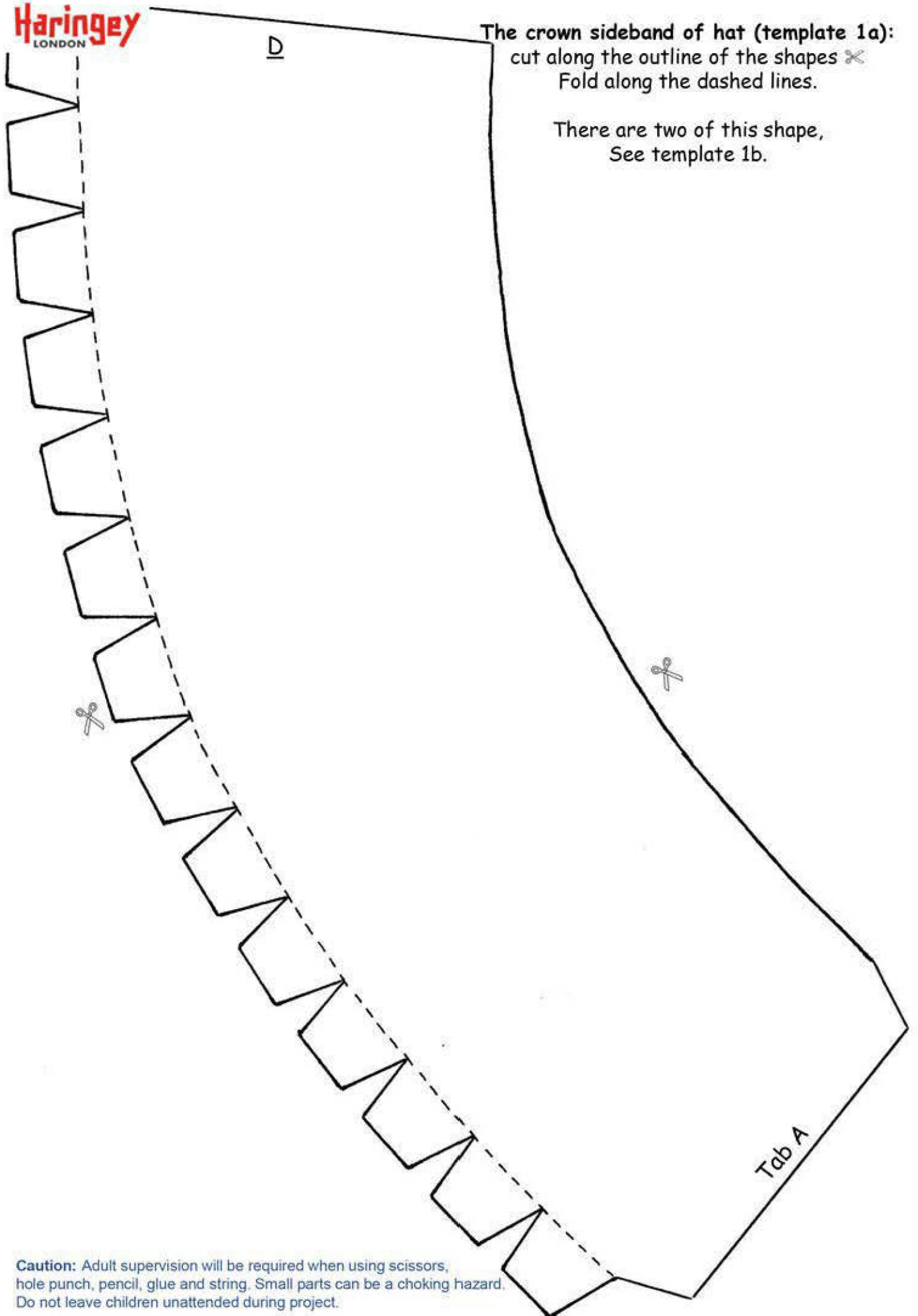
- ❖ The hat templates below
- ❖ A4 Craft card
- ❖ Scissors
- ❖ Hole punch
- ❖ All-purpose glue and glue stick
- ❖ Pencil
- ❖ String
- ❖ Paperclip

Caution: Adult supervision will be required when using scissors, hole puncher, pencil, glue, and string. Small parts can be a choking hazard. Do not leave children unattended during project.



Follow this step by step guide to make your hat:

1. Cut along the solid outline of the templates provided. Do not cut along the dashed lines. Draw the outline of the shapes on to craft card (or glue the templates on to craft card). Cut around the shapes (see Photograph 1). The decorative designs can remain in paper format.
2. **The crown sideband of the hat (templates 1a, 1b):** There are two of this shape. Glue tab 'A' and attach on to 'B' (see photograph 2). Fold the tabs in and arrange the shape into a circle. Use a paperclip to maintain the shape.
3. Glue around the edge of the crown tip (template 2) of the hat.
4. Attach the round crown sideband on to the crown tip, adjusting the tabs towards the edge. When completed, remove the paperclip. Glue tab 'C' of the crown sideband and stick on to 'D', to secure the shape.
5. **The thin band of the hat (template 3):** Pierce the holes with a pencil or a hole punch. Make sure the tabs are on the same side (see photograph 3). Glue tab 'E' and stick on to 'F'. Open the tabs out and curve the thin band into a circle. Use a paperclip to maintain the shape (see photograph 4).
6. Glue the inner edge of the crown sideband of the hat (see photograph 5). Stick the thin band's tabs on to the glued inner edge of the crown sideband of the hat (see photograph 6).
7. When the thin band is attached on to the rest of the hat, remove the paperclip. Glue tab 'G' and stick on to 'H', completing the hat (See photographs 7 and 8).
8. Decorate your hat (template 4). String the hat via the small holes on the sides of the thin band of the hat.

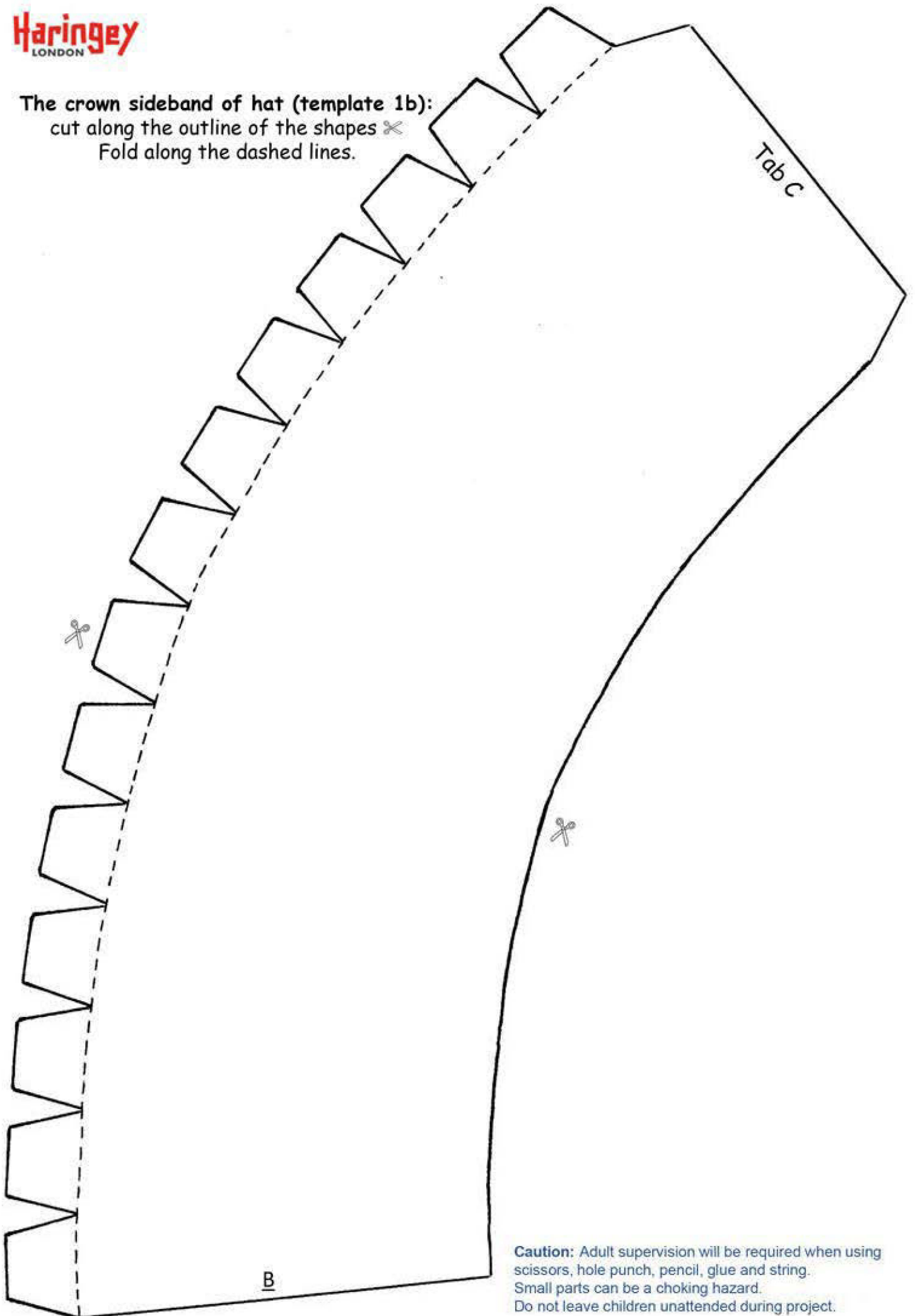


The crown sideband of hat (template 1a):
cut along the outline of the shapes ✂
Fold along the dashed lines.

There are two of this shape,
See template 1b.

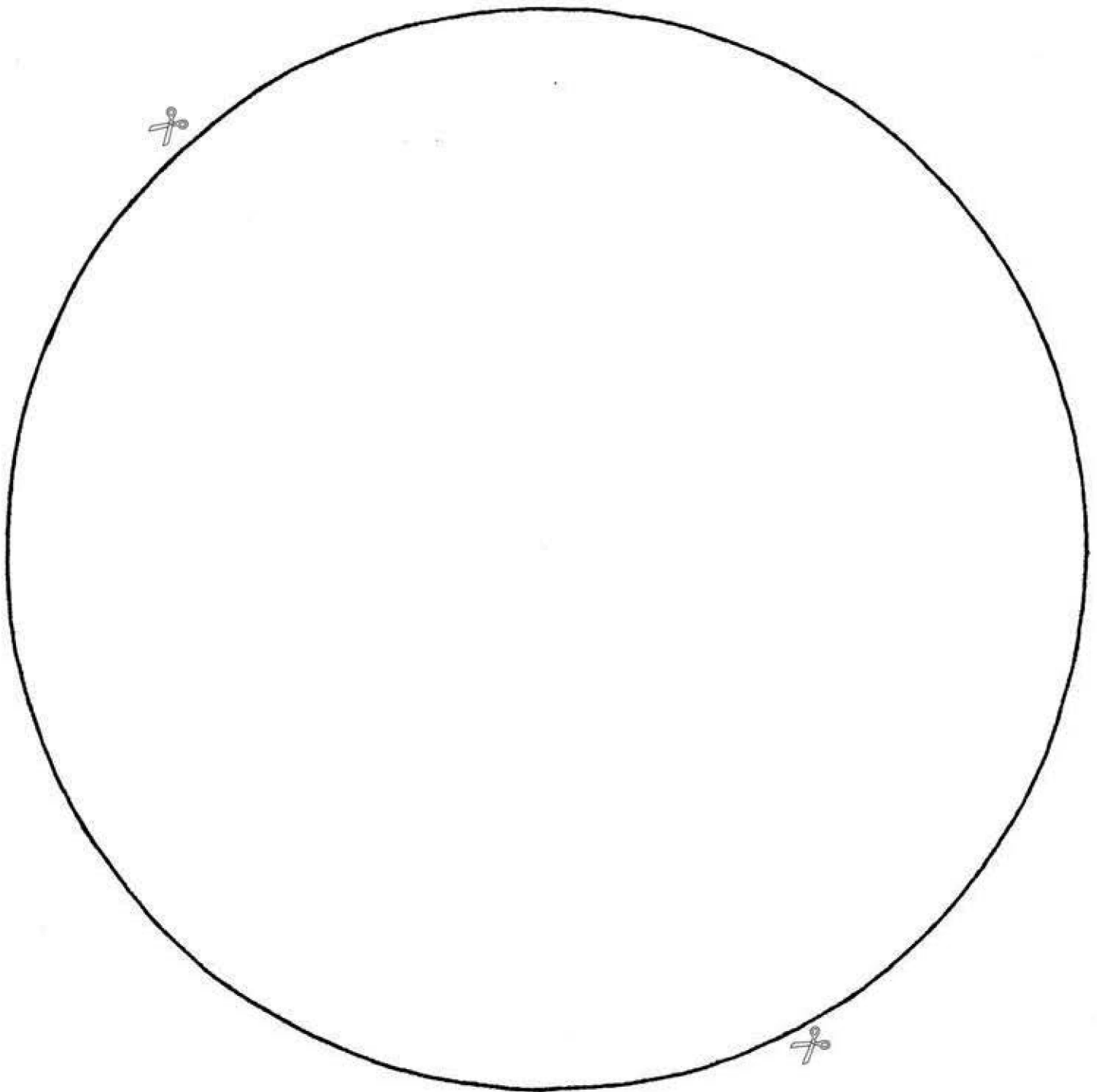
Caution: Adult supervision will be required when using scissors, hole punch, pencil, glue and string. Small parts can be a choking hazard. Do not leave children unattended during project.

The crown sideband of hat (template 1b):
cut along the outline of the shapes ✂
Fold along the dashed lines.

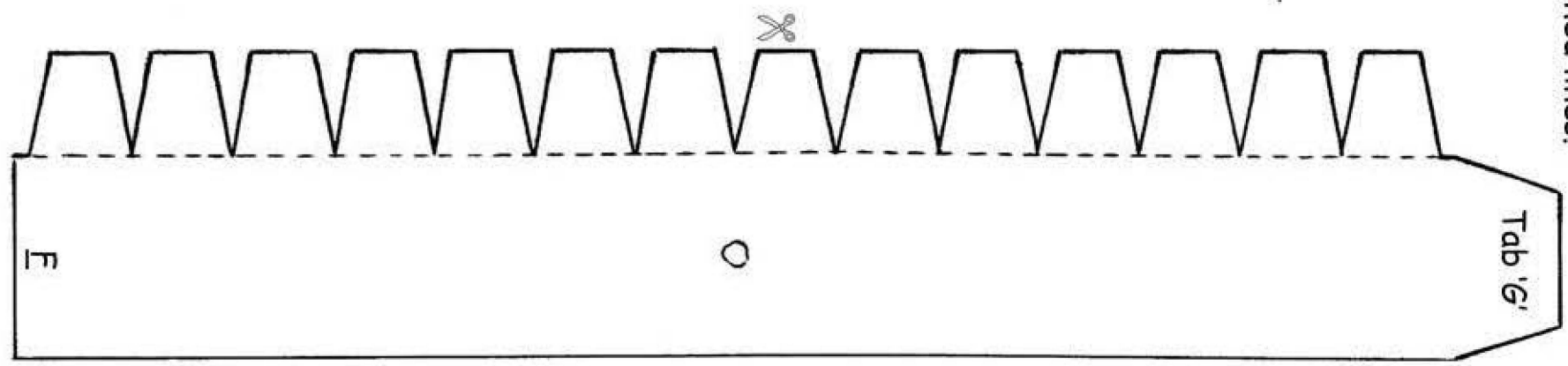
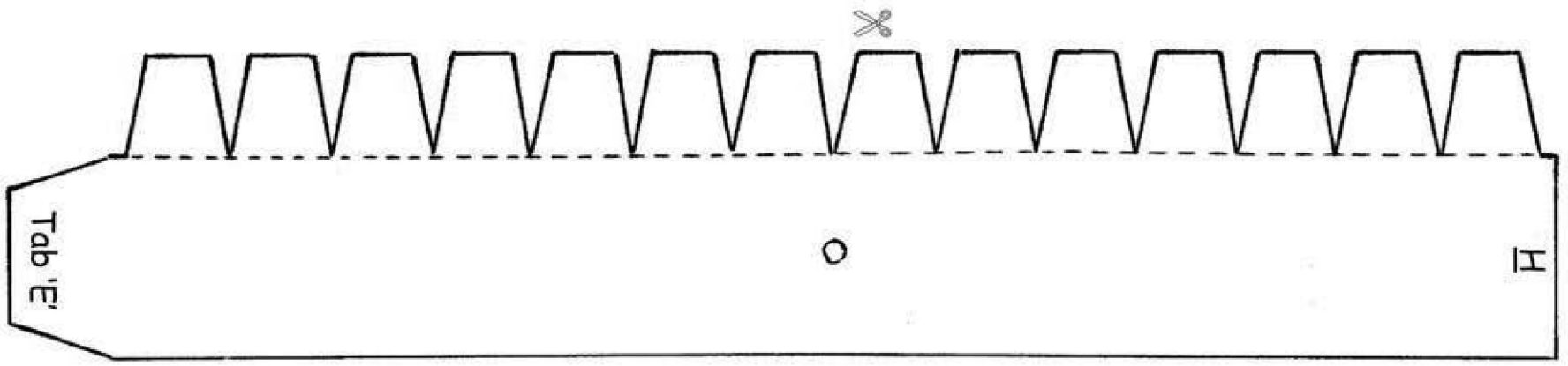


Caution: Adult supervision will be required when using scissors, hole punch, pencil, glue and string. Small parts can be a choking hazard. Do not leave children unattended during project.

Crown tip of hat (template 2):
cut along the outline of the shape ✂



The thin band of the hat (template 3):
cut along the outline of the shape ✂
Fold along the dashed lines.



Decoration (template 4):
cut along the outline of the shapes ✂

