



# Local Heritage List

## Consultation Draft



# Foreword

I am pleased to present the draft Local Heritage List for public consultation. We hope this document will highlight the quality and variety of our Borough's built heritage, and identify locally important heritage buildings that contribute to the character of our neighbourhoods and are valued by local communities.

Local Heritage Listing shouldn't prevent change to the built environment. It is our hope that it will add to our understanding of local heritage, so that opportunities to enhance the historic character of our neighbourhoods can be identified, and unnecessary harm or loss of these irreplaceable buildings can be avoided. The list should be a useful resource for owners and users of buildings, local communities, and anyone with an interest in local heritage.

The Local Heritage List is also an important tool in the planning process and will be taken in to account when the Council is considering applications for planning permission. The information in this document should clarify why these buildings are important, supporting good decision-making, and providing clarity to everyone involved.

I would like to thank Haringey's Conservation Area Advisory Committees, who have helped research and prepare the draft list, volunteering their time and invaluable local knowledge. Good heritage management is only possible with the support and involvement of the local community, and I encourage everyone to read and comment on the draft list. This public consultation is an opportunity for local residents and businesses to have their say on this important new document.



# Contents

1.	Introduction	4
1.1.	About the Local Heritage List	
1.2.	Why publish a Local Heritage List?	
1.3.	What is included on the list?	
2.	Decision making and the planning process	6
2.2.	Assessing the impact of proposals	
2.3.	General guidelines for changes affecting a locally listed building	
3.	Preparing the list	9
3.2.	Buildings removed from the list	
3.3.	Consultation	
4.	Selection criteria	10
4.2.	Interest	
4.3.	Significance	
5.	Draft List	14
5.1.	Neighbourhood Areas Overview	
5.2.	Alexandra Palace and Bounds Green	
5.4.	Crouch End	
5.5.	Harringay	
5.6.	Highgate	
5.7.	Muswell Hill	
5.8.	Hornsey	
5.9.	Noel Park and Lordship Lane	
5.10.	Stroud Green	
5.11.	Tottenham and St Ann's	
6.	Appendices	41
6.1.	Appendix 1 - List entries in alphabetical order by street	
6.2.	Appendix 2 - Buildings and structures recommended for removal from the list	

# 1. Introduction

## 1.1. About the Local Heritage List

**1.1.1.** Creating a local heritage list is a way for the Council and local communities to identify and celebrate historic buildings and other structures that enrich and enliven the Borough. Local heritage lists sit within a continuum of measures for identifying and protecting buildings and other heritage assets, which includes World Heritage Sites at the international level, national designations such as listed buildings, scheduled monuments and historic parks and gardens, and conservation areas.

**1.1.2.** The buildings identified on the local heritage list are considered 'non-designated heritage assets'. They are not included on the Statutory List (administered by Historic England) or protected by other national designations, but they have some heritage significance that is locally important and should be taken into consideration in the planning process.

**1.1.3.** The Government's National Planning Policy Framework recognises that heritage assets are an 'irreplaceable resource' and should be conserved 'in a manner appropriate to their significance'. This includes non-designated heritage assets.

## 1.3. Why publish a Local Heritage List?

**1.3.1.** The National Planning Policy Framework requires that local planning authorities set out 'a positive strategy for the conservation and enjoyment of the historic environment'. Preparing a Local Heritage List identifying non-designated assets is part of this. The Government's Planning Practice Guidance (paragraph 39) suggests that local authorities create locally administered lists of undesignated heritage assets. This is a clear, consistent and accountable way of identifying the sites, clarifying what it is about them that is significant, and ensuring this is given due consideration when changes affecting the historic environment are proposed. Recent guidance from Historic England supports this approach.

**1.3.2.** The list identifies non-designated heritage assets, setting out why they are included, and which parts of the structure are most significant. This information can help inform both strategic planning, and allows the Council to consider local heritage interest when deciding whether to grant planning permission for proposals affecting these buildings. It will also be a valuable source of information for residents, developers, the Council and the owners and users of buildings.

**1.3.3.** Preparation of the Local Heritage List is also an opportunity for the Council to work with local communities and gain a greater understanding of





how the borough's heritage is valued at a local level; to promote engagement with the borough's history and raise awareness of Haringey's rich cultural heritage. As well as having an important role in the Council's planning functions, this document is intended to be a source of information to those with an interest in our Local Heritage.

## 1.4. What is included on the list?

**1.4.1.** This Local Heritage List includes built structures (buildings, bridges and other infrastructure, street furniture, walls, statuary, etc.) and designed landscaping. It does not cover natural landscape features, habitats, trees, views (locally significant views are identified in the local plan) or open space. Local events or building uses are also not considered, although where a structure is linked to locally significant uses or past events, this can contribute to its significance.

**1.4.2.** Most street furniture located on public streets or spaces (bollards, signs, way markers, troughs, statues, etc.) is identified in Haringey's Historic Street Furniture Audit (2006) and is not covered here. There are some exceptions, such as when one of these structures is not located in the public realm. Parks and gardens are identified in the register of Public Parks, Gardens,

Squares, Cemeteries and Churchyards of Local Historic Interest, compiled by the London Historic Parks and Gardens Trust, and are not included here, although landscape features that are not parks or gardens (such as the new river aqueduct) are included here.

**1.4.3.** Assets that are covered by another designation (such as statutory listing) are not included here. Buildings that are in an area designated as conservation area may also be included on the Local Heritage List, where the building has some additional significance in its own right, notwithstanding its contribution to the character and appearance of the Conservation Area.

**2.1.1.** It is important to realise that local heritage listing is not a statutory designation and does not provide any additional legal protections or constraints on development. Listed Building Consent is not required when making changes to locally listed buildings and permitted development rights are not affected.

**2.1.2.** However, where planning permission is required, locally listed buildings will be treated as non-designated heritage assets. Proposals will be judged against Haringey's Local Plan Policies relating to management of the historic environment. SP12 in Haringey's Strategic Policies (2017) sets out the Council's intention to ensure the conservation of the historic significance of Haringey's heritage assets (including Locally Listed Buildings) and supports the use of the historic environment as a basis for heritage-led regeneration and as a basis for good design and positive change. DM9 Management of the Historic Environment, in Haringey's Development Management DPD (2017) sets out in more detail the Borough's approach to managing development affecting heritage assets. DM9 F refers specifically to Listed and Locally Listed buildings and sets out the Council's intention to secure the future of these buildings.

**2.1.3.** The fact that a building or site is on a local heritage list means that its conservation as a heritage asset is an objective of the NPPF and a material consideration when determining the outcome of a planning application. When deciding applications for planning permission that affect a locally listed heritage asset or its setting, the NPPF requires that the effect of an application on the significance of a non-designated

heritage asset should be considered. In weighing applications that directly or indirectly affect non-designated heritage assets, a balanced judgement will be required having regard to the scale of any harm or loss and the significance of the heritage asset.

## 2.2. Assessing the impact of proposals

**2.2.1.** When preparing and assessing planning applications affecting local heritage assets, it is important to gain an understanding of the building's significance. Significance is defined in the NPPF as "the value of a heritage asset to this and future generations because of its heritage interest." The interest may be archaeological, architectural, artistic or historic." There is more information on how to understand significance in section 4 'Selection Criteria' below. The listing description is a good starting point, but it will often be appropriate to undertake a more detailed assessment of the building's significance when developing proposals, and to submit the information in a heritage statement accompanying the application. Heritage statements are not required for Householder applications.

**2.2.2.** Inclusion on the Local Heritage List should not prevent change, and a good understanding of these buildings and their significance will clarify where there are opportunities for change. Carefully considered changes can often be made without having an adverse impact on significance. Parts of the building or its



setting might not contribute to significance, and may detract from it. Understanding significance will often highlight opportunities for beneficial change that enhances the asset. Locally listed buildings are considered less significant overall than statutory listed buildings, and in many cases, there will be more scope for change.

**2.2.3.** Where proposed changes will cause harm to the asset's significance, the Council will take a balanced approach. Total or substantial demolition, or changes that cause the significance to be substantially lost will not usually be acceptable. Every effort should be made to minimise harm. Unjustified or unnecessarily harmful changes that could be avoided will not be considered acceptable, even if the impact is small.

**2.2.4.** Where Proposals will deliver heritage benefits (for example by improving the setting, securing essential maintenance, or adapting a disused building to an appropriate new use), this will be weighed against any adverse impacts. Layout and access changes, extensions, updating servicing etc. will often be acceptable in order to secure the continued use of the building.

**2.2.5.** Where development proposals cause some harm to a locally listed building but deliver wider public benefits, the Council will take a balanced approach as required by the NPPF, taking in to account how significant the building is, and the scale of the harm caused. Local listing is not intended to prevent development that could benefit the borough in other ways. However, inclusion on the local list does ensure that the significance of the building is properly understood and given due consideration in the planning process.

**2.2.6.** The absence of any building from the published local heritage list does not necessarily mean that it has no heritage value. It may be the case that an asset is only identified when a planning application comes forward, in which case its significance can be assessed against the selection criteria included in this document.

## **2.3.** General guidelines for changes affecting a locally listed building

**2.3.1.** There are a huge variety of buildings types included on the list, and each development proposal will be considered individually, having regard to the considerations above. It is impossible to provide definitive rules about what is and is not appropriate that will apply in every case. The following are general considerations that it will be helpful to keep in mind when proposing changes affecting a locally listed building or its setting. In all cases, advice should be sought at an early stage from appropriately experienced heritage professionals who will be able to provide more specific advice.

### **2.3.2.** Opportunities for enhancement

- ➔ **Repair and restoration:** Many of the buildings on the Local Heritage List are in poor repair or have been altered in ways that harm their significance (e.g. UPVC windows, cluttered signage). Opportunities to undertake repairs, restoration of original features and removal of clutter should be considered.
- ➔ **Setting:** Often the setting of a building has changed over time and can detract from its significance. Consider opportunities to enhance or restore the setting (e.g. landscaping, reinstate building line).
- ➔ **Updating:** Improvements to accessibility, servicing, thermal performance, functionality, etc. can ensure the continued use of the building, and allow it to be enjoyed more easily.
- ➔ **Adaptive Reuse:** Finding appropriate new uses for disused buildings can secure their future, allow them to be enjoyed and appreciated more widely, and contribute to the vitality of the local area. This is especially true where the new use is publicly accessible, and the building can be enjoyed by the wider public.
- ➔ **Good quality design:** Alterations, extensions, adaptations and new buildings nearby that are

of high quality in their design and construction, and complement the locally listed building, will be considered an enhancement. Creative, contemporary design work that responds appropriately to the context is usually welcomed. Extensions and new buildings affecting a Local Heritage Asset are not required to replicate historic building styles.

### 2.3.3. Preserving significance

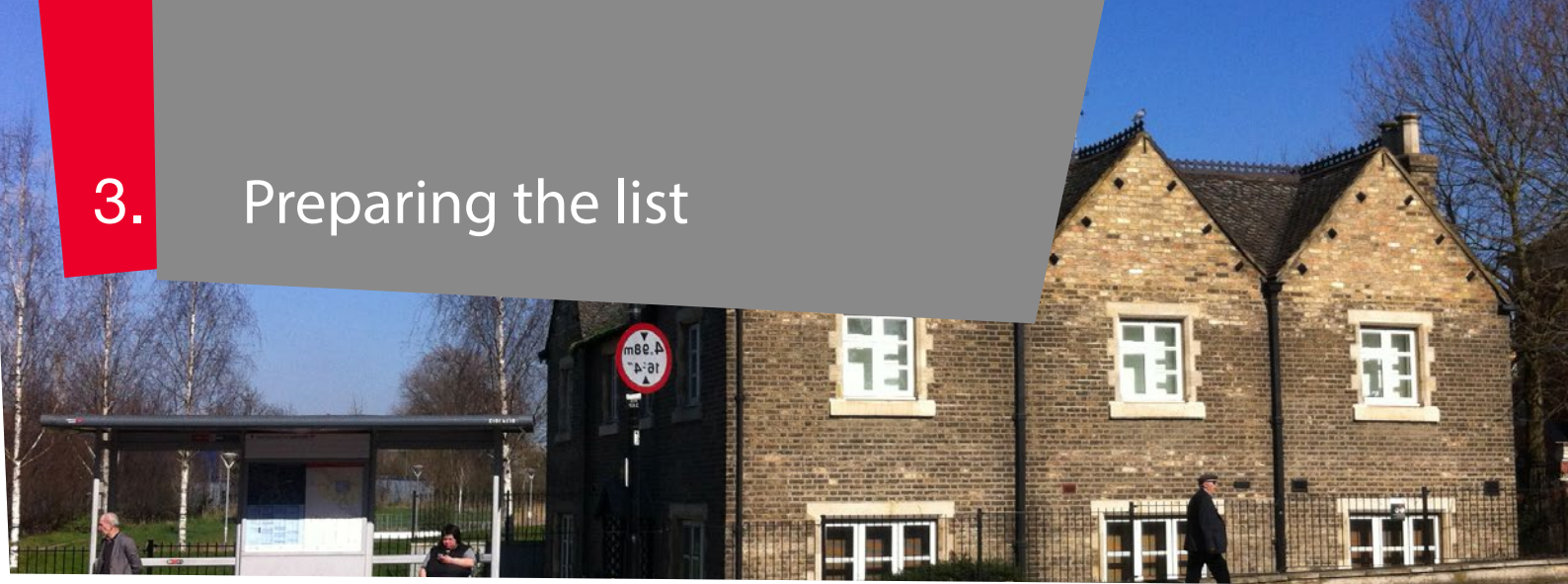
- Historical features and fabric should be retained and repaired, never removed. Where these are damaged or lost, it might be appropriate to reinstate them, replicating the original materials and techniques.
- Internal layout and interior features often contribute to the significance of the building and should be preserved where practicable.
- Care should be taken to use appropriate materials and techniques for the age of the building. For example, breathable lime-based materials are usually appropriate for older houses. Inappropriate use of materials can cause permanent harm to the fabric.
- Where replacement of windows, doors, roofing material, or other parts of the structure is required, this should usually be on a like for like basis. It will usually be acceptable to incorporate double glazing in replacement windows provided that the original material and design is replicated.
- Where possible, the original setting of the building should be preserved (including garden walls, soft and hard landscaping, relationship to neighbouring buildings and the street).
- Extensions should usually be subordinate in size and should be carefully designed to complement the original building.

### 2.3.4. Harmful changes to be avoided

- Rendering or painting of brickwork or other façade materials, or application of cladding or external insulation.
- Replacement windows and doors that don't match the original, especially UPVC.
- Demolition of part or all of the building.
- Removing or covering up architectural features such as shop front features, ironwork, chimneys, etc.
- Removing the original boundary wall or landscaping to provide hard surfacing for parking in front gardens.
- Most roof extensions.
- Excessive changes to internal layout, or loss of interior features and historic fabric: The layout of the interior of the building, features such as fireplaces, and the historic fabric including floorboards, plasterwork, etc. all contribute to the building's significance. 'Façade retention' is not usually an acceptable approach.
- Inappropriate change of use can be harmful, for example converting a local pub to residential flats will cause some loss of significance.
- New buildings or other changes nearby that negatively affect the setting of the building or views of the building.



## 3. Preparing the list



**3.1.1.** The Local Heritage List has been prepared following guidance in Historic England, Historic Environment Advice Note 7: Local Heritage Listing (2012) as well as other relevant guidance. This document is the outcome of a comprehensive review of Haringey's existing local list, which was first adopted in 1978. New selection criteria were developed (see section 4). Every entry on the existing list and 209 new suggestions were considered and assessed against the new selection criteria. The assessment process included site visits, and desk based and archival research

**3.1.2.** The draft list has been prepared in collaboration with Conservation Area Advisory Committees across the borough, who were invited to participate in reviewing existing entries and suggesting new ones in their area. Most of the new entries on the list have been suggested by these local groups who have specific knowledge of the area.

### 3.2. Buildings removed from the list

**3.2.1.** This document recommends that a number of buildings are removed from the list. These are listed in appendix 2, with a short explanation for each. Removal from the list does not mean that the building has no significance. In some cases, they are protected by another heritage designation: buildings that have been added to the statutory List have been removed.

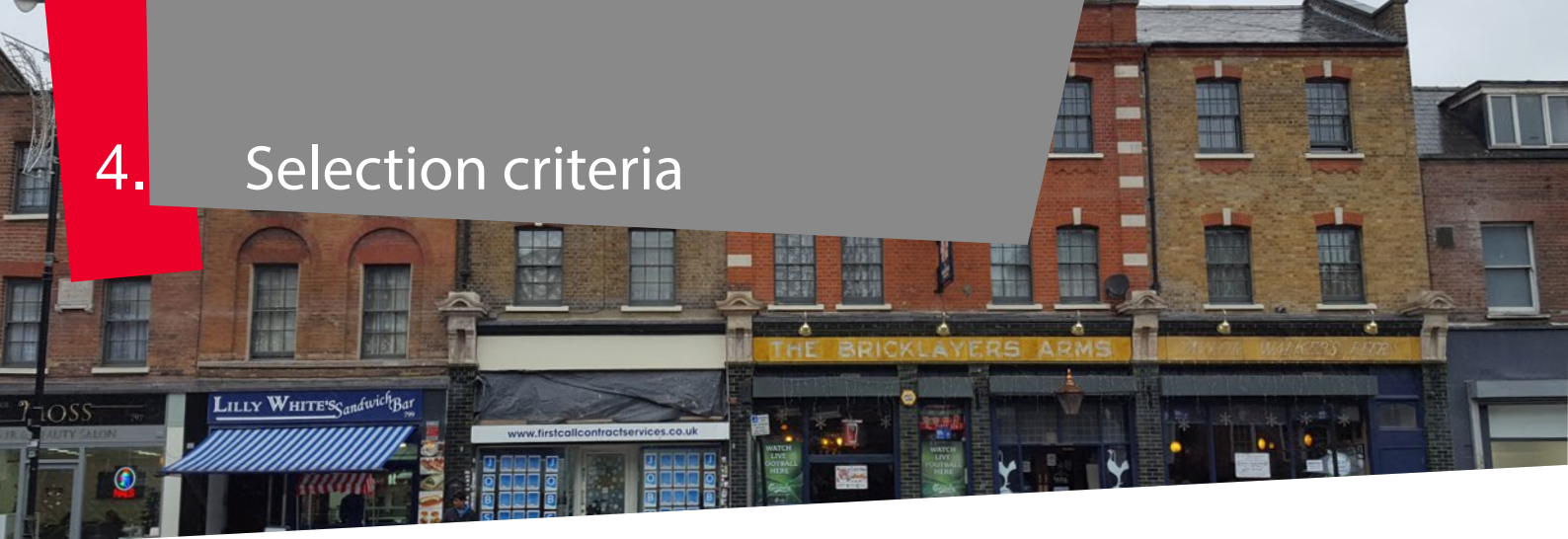
**3.2.2.** Many are already part of a conservation area, and while they don't meet the criteria for inclusion on the local list or statutory list in their own right, it is important to note that most make a positive contribution to the conservation area, which is a designated heritage asset. In some cases, the building has been demolished, or is so altered or damaged that it has lost its significance.

### 3.3. Consultation

**3.3.1.** This draft list is being published for a six-week public consultation. This is an open consultation. Anyone can comment on the document. Comments can relate to the listing criteria and guidance, or to individual list entries.

**3.3.2.** All comments will be reviewed, and responses will be included in a consultation report. Where it is considered appropriate, the documents will be revised taking account of responses received, and the revised document submitted to the Cabinet for adoption. Responses to all comments will be included in a consultation report, which will be published when the revised document is referred to the Council for adoption.

## 4. Selection criteria



4.1.1. The selection criteria are based on the definition of significance in the NPPF, as well as the heritage values identified in Conservation Principles (2018) published by Historic England. These have been adapted in to four clear categories of interest listed below, that are easily understandable by all who may have an interest in the local heritage list or wish to contribute, and that are generally applicable to Haringey's Local heritage.

4.1.2. The Government's planning practice guidance on non-designated heritage assets notes that 'Only a minority of buildings have enough heritage interest for their significance to be a material consideration in the planning process. The five significance criteria have been included to ensure that only those buildings

that have enough heritage interest are included, and that the efficacy of the list is not compromised by the inclusion of buildings that lack any special significance. The criteria are designed to pick out those buildings that most significant locally and should be considered in their local context, so for example: a Victorian house which would be unremarkable in one part of the borough, might be considered a rare survival in a neighbourhood that has undergone more change over the years.

4.1.3. Nominated buildings or structures should meet at least one of the criteria from each column, and at least one additional criterion from either column.

### 1. HERITAGE INTEREST

To ensure that the list reflects recognised heritage values, nominations must have at least one of these qualities.

- Historical interest
- Social or community interest
- Architectural or urban design interest
- Aesthetic interest

### 2. DEGREE OF SIGNIFICANCE

To ensure that the list protects only the most important and significant examples, and that the designation is not devalued, nominations must meet at least one of these criteria.

- Rarity (in the local area)
- Representativeness
- Integrity
- Age
- Innovative or influential



## 4.2. Heritage Interest

### 4.2.1. Historical Interest

Historical associations, evidential or illustrative value: The structure is closely associated with historical people or events of local or wider interest, or it provides evidence about, or is illustrative of, the area's history, or regional/national history.

- Historical associations could mean that the building is the former home of a locally known historical figure or the place where locally significant events took place.
- Evidential or illustrative value means that the structure tells us something about the historical development of the area or shows us what the area was like in the past or how people used to live.

### 4.2.2. Social or Community interest

The structure is well known, makes a considerable contribution to sense of place, or is closely associated with particular functions, events, traditions or memories that are of inity as a whole.

- Structures in this category might be associated with a particular use such as a market hall, gathering place, school, or community space. It might be commemorative such as a statue or memorial. It might be something that people feel defines their local area or contributes to its unique character.



Historical Interest: The Marsh Lane Pumping Station in Tottenham is illustrative of an aspect of the area's history - the rapid development during the late Victorian era including important expansion of infrastructure.



Historical Interest: This building in Hornsey appears very unremarkable but was the original workshop of the renowned Lotus car company which was founded here in the 1950s. Much of the original fabric remains, hidden behind the builders merchant's signage.



Social or Community Interest: This historic water trough near the centre of Wood Green predates much of the surrounding townscape and is a local landmark, creating a connection with the area's past.

### 4.2.3. Architectural or urban design interest

Design, construction, craftsmanship, decoration, layout or urban form is of interest. The structure could be representative of a particular style, architect, pattern of development or technology, or it could be distinctive, innovative or of exceptional quality.

- Outstanding examples of architectural styles such as Modernism or the Arts and crafts style, or development influenced by the Garden Cities movement would meet this criterion. It could be that the brickwork or use of cast iron is of a particularly high quality. On the other hand, the structure might be significant because it is unique or innovative and differs from common types of building seen elsewhere.

## 4.3. Degree of Significance

### 4.3.1. Rarity (in the local area)

The building exemplifies a quality that is unique or unusual, or is one of few remaining examples where others have been lost.

→ This is often related to age, but may be a result of there having been only a few examples in the first place. Older buildings or structures tend to be rarer because it is more likely that over time other examples of the same kind will have been lost. The rarer the building or structure the more valuable it is.



Rarity: The Lodge at Woodside park is significant because of its unusual design and construction, not found elsewhere

### 4.3.2. Representativeness

The structure is a particularly fine example of a quality or type.

→ There may be a number of buildings of a particular style, In the Muswell Hill area, for example, there are many examples of buildings from the Edwardian era that reflect the architectural styles of the time, but only the finest examples should be included on the list.



Architectural Interest: This former Presbyterian Church in Highgate is an attractive example of church architecture in the Victorian Gothic style.

### 4.2.4. Aesthetic interest

The structure makes an important contribution to visual appeal, views, townscape or landscape (perhaps as a focal point or landmark) or is unusually attractive in appearance.

→ A building that makes an important contribution to the townscape would meet this criterion, even if the architectural qualities taken on their own are unremarkable. It might be a terrace of houses that defines the space of a street or public square, a building that frames or is the focal point of views, or a style of wall that defines a distinctive townscape. Visual landmarks that contribute to the legibility of the townscape might also be included, such as clock towers or station frontages.

→ Structures with unusual aesthetic qualities, perhaps as a result of many alterations and additions that have built up over time or because of their relationship with the landscape might also be included here.



Aesthetic Interest: This bridge over the disused railway in Alexandra Palace Park contributes to the distinctive landscape character.





Architectural Interest: This former Presbyterian Church in Highgate is an attractive example of church architecture in the Victorian Gothic style

#### 4.3.3. Integrity

It is unusually well-preserved or has coherence or completeness in composition, either in itself or as part of a group.

→ A structure might be considered particularly significant because it hasn't changed much since it was first built, where other examples of the same type might have been extensively altered or fallen in to poor repair. This criterion might apply to groups of structures that relate to each other, for example a shopping parade, or a church with vicarage and church yard.



Integrity: This terrace of houses on Castle Yard in Highgate is unusually uniform and well preserved, with all of the original features

#### 4.3.4. Age

Of particular value because of its age, or dating from the earlier part of the borough's development.

→ The older the building or structure is the more valuable it is likely to be. (Most buildings in original or largely unaltered condition which date from before 1840 are included in the national list.)



This building containing a small Bakery in Crouch end dates from 1850 - much earlier than its neighbours - and retains much of its original character.

#### 4.3.5. Innovative or influential

The first, or an early example of a particular quality, influencing future development in the area or more widely, or uses design or technology in a way not previously seen.

→ Buildings that meet this criterion might be works of a well known architect which influenced other buildings from that time. It might make use of a new (at the time) technology.

Innovative or Influential: This prefabricated house (below) and the small garden house (above) in Highgate were built by the architect Walter Segal as prototypes for his later prefabricated self-build houses including Segal Close in Lewisham.



## 5. Draft List

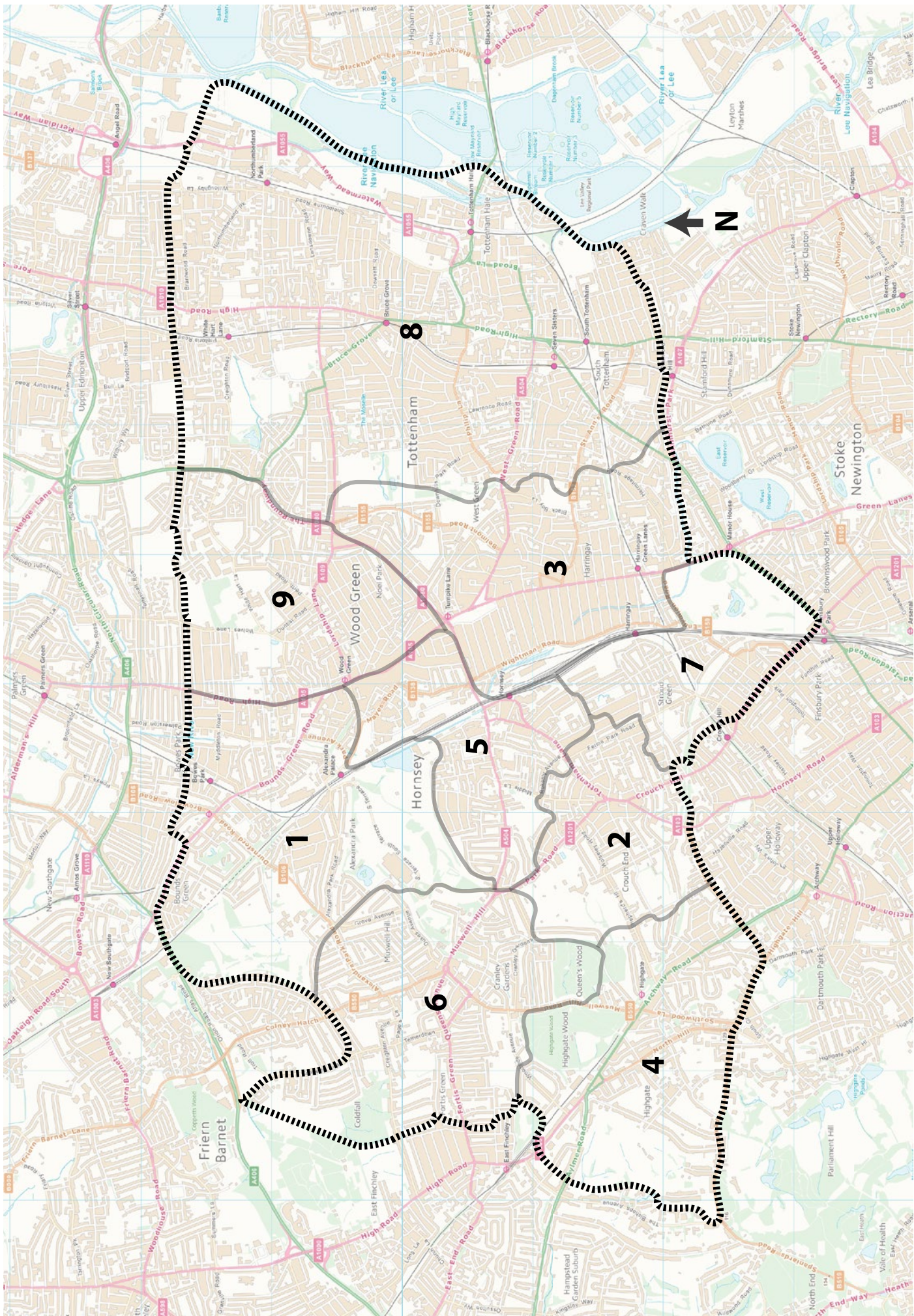


### 5.1. Neighbourhood Areas Overview

5.1.1. The draft list has been organised in to neighbourhood areas, based on neighbourhoods identified in Haringey's 2015 Urban Characterisation Study. This is principally for practical reasons as it allows the entries relating to each area to be reviewed easily and shown on a map. It also allowed local heritage groups who contributed to the drafting process to focus on their area of interest. New additions proposed here that were not previously included on the list are highlighted in yellow.

1. Alexandra Palace and Bounds Green
2. Crouch End
3. Haringay
4. Highgate
5. Hornsey
6. Muswell Hill
7. Stroud Green
8. Tottenham and St Ann's
9. Noel Park and Lordship Lane

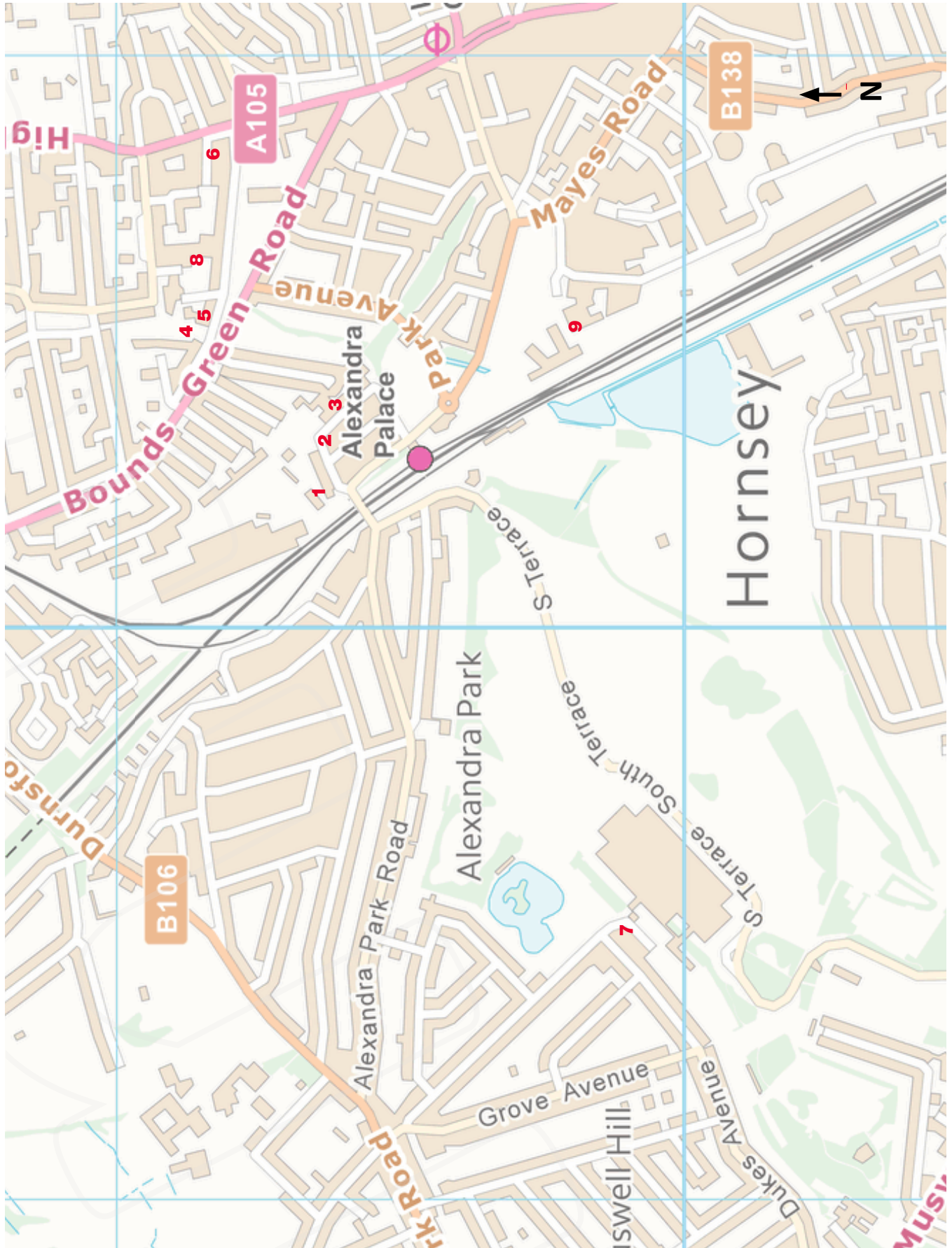






5.2.

# Alexandra Palace and Bounds Green



Locally listed buildings in Alexandra Palace and Bounds Green

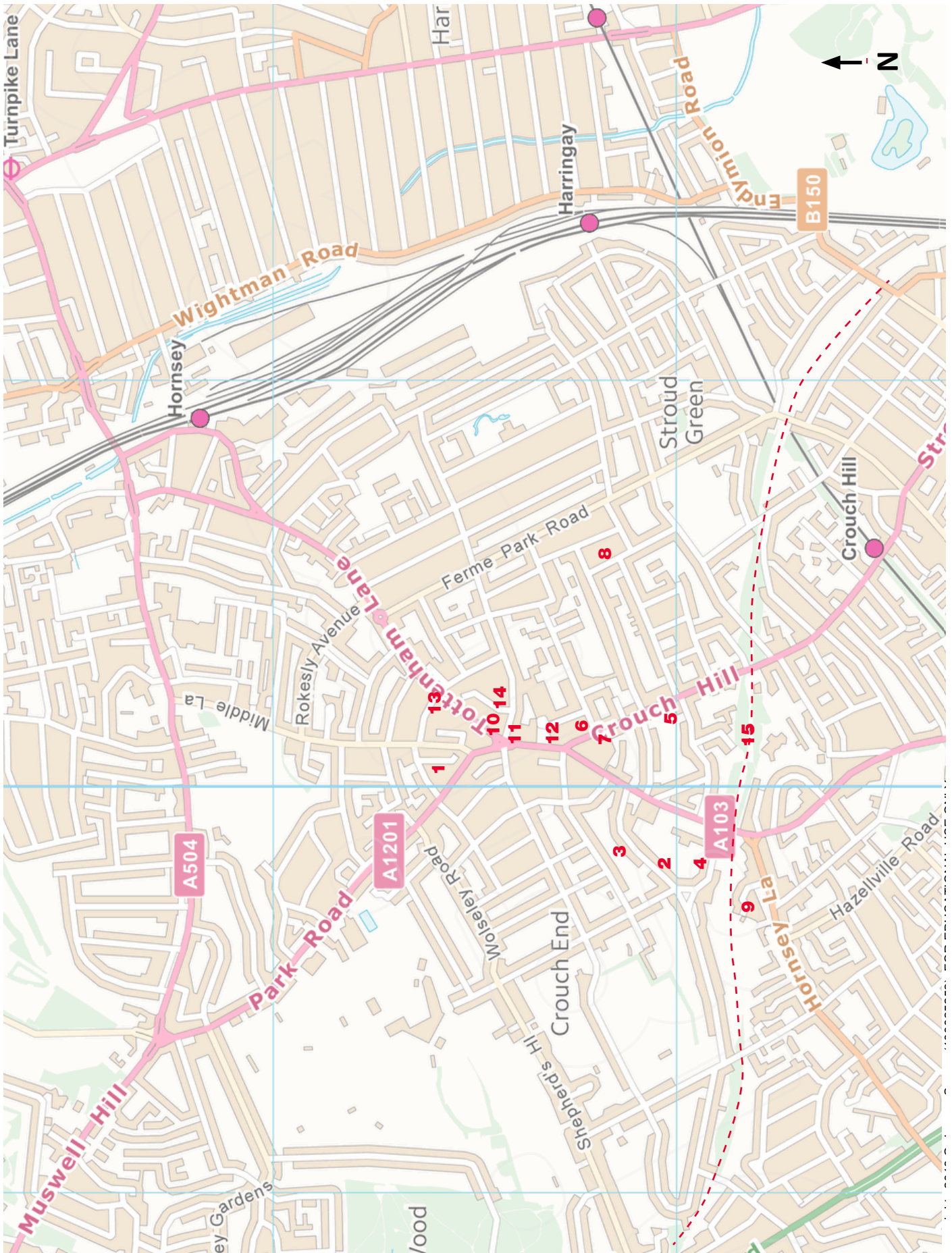




	Premise number	Street Address	Name/description
1	1-15 (odd)	Bridge Road, Wood Green, N22	Terrace of 19th century workers cottages
2	15-19 (odd)	Dorset Road, Wood Green, N22	19th century houses with dutch gables
3	2-24 (even)	Dorset Road, Wood Green, N22	Terrace of 19th century cottages
4	St Barnabas	Finsbury Rd, N22 8PA	Greek orthox church with spire
5	1	Finsbury Rd, Wood Green, London N22 8PA	The Prince public house
6	287	High Road, Wood Green	Former Fishmonger's Arms Public House
7	Station building	The Avenue, Muswell Hill, N10	Former Alexandra Palace Rail station building
8	St Mary's Greek Orthodox Church	Trinity Road, N22	Former Methodist Chapel
9	22	Western Rd, Wood Green, N22	Decorium - former public swimming pool

5.4.

Crouch End



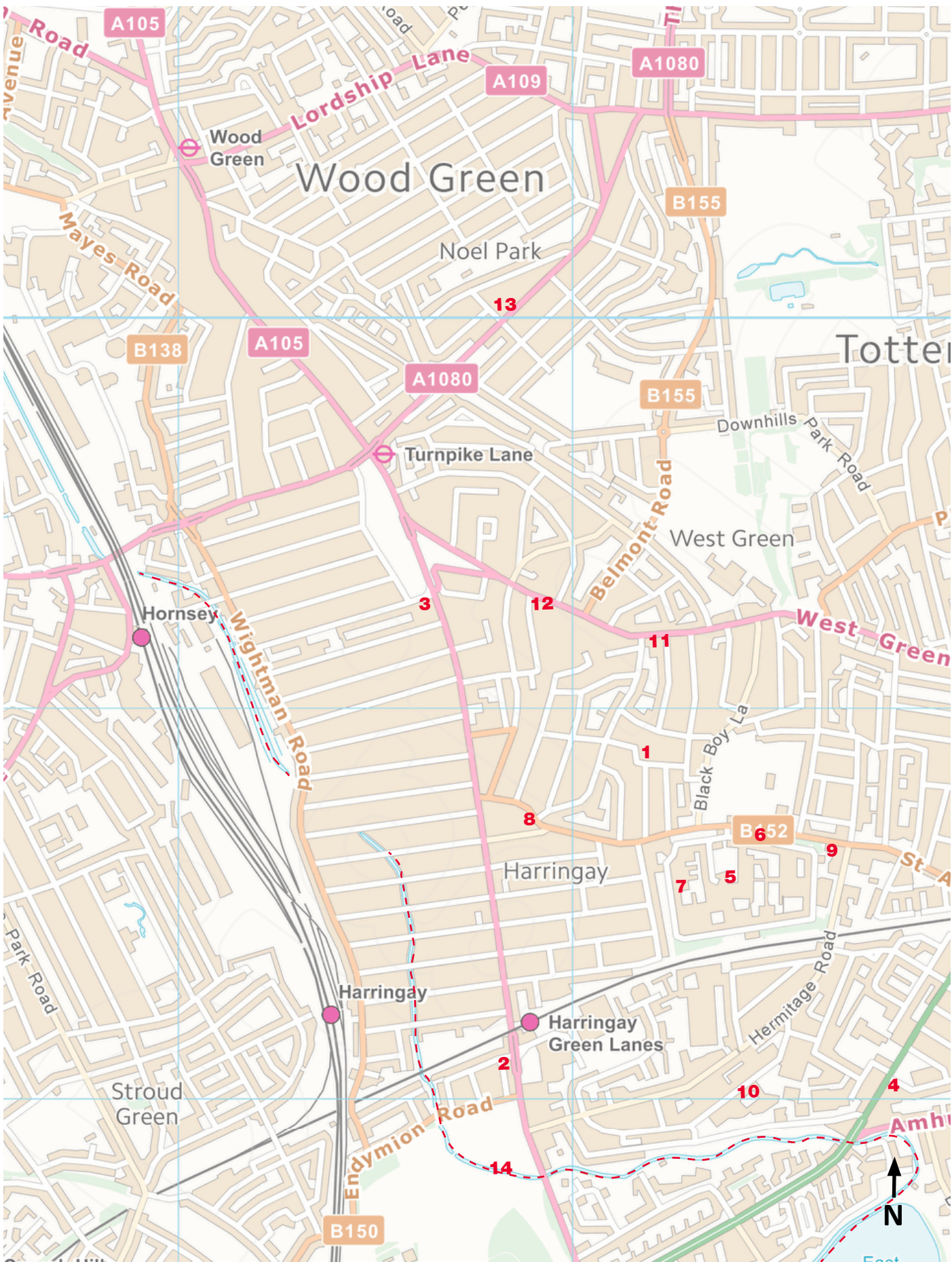
Locally listed buildings in the Crouch End neighbourhood area





	Premise number	Street Address	Name/description
1	1-6 (consecutive)	Back Lane, Crouch End, N8	Topsfield Cottages
2	18 and 22	Crescent Road, Crouch End, N8	Group of gothic villas
3	15-19 (odd)	Crescent Road, Crouch End, N8	Group of gothic villas
4	6-12 (even)	Crescent Road, Crouch End, n8	Group of gothic villas
5	113	Crouch Hill, Crouch End, N8	Detached house with architectural merit
6	Adjacent to 132	Crouch Hill, Crouch End, N8	Former Floral Hall, glazed shop building
7	145	Crouch Hill, Crouch End, N8	Park Chapel
8	2-8 (even)	Gladwell Road, N8	Group of mid 19th century detached houses
9	131 and 133	Hornsey Lane, Highgate, N6	Semi detached Victorian villas
10	48	The Broadway Crouch End	Corner building with stone dressing
11	46	The Broadway, Crouch End	Corner building with stone dressing
12	6	The Broadway, Crouch End, N8	Early shop building
13	46 and 46A	Topsfield parade, Crouch end	Very well-preserved Edwardian shop front
14	14 and 16	Weston Park, Crouch End, N8	Corner buildings with turrets
15		Parkland Walk and associated historic structures (Highgate, Crouch End and Stroud Green)	Former railway line (now a park) including a number of historic bridges, platforms and other structures

5.5. Harringay



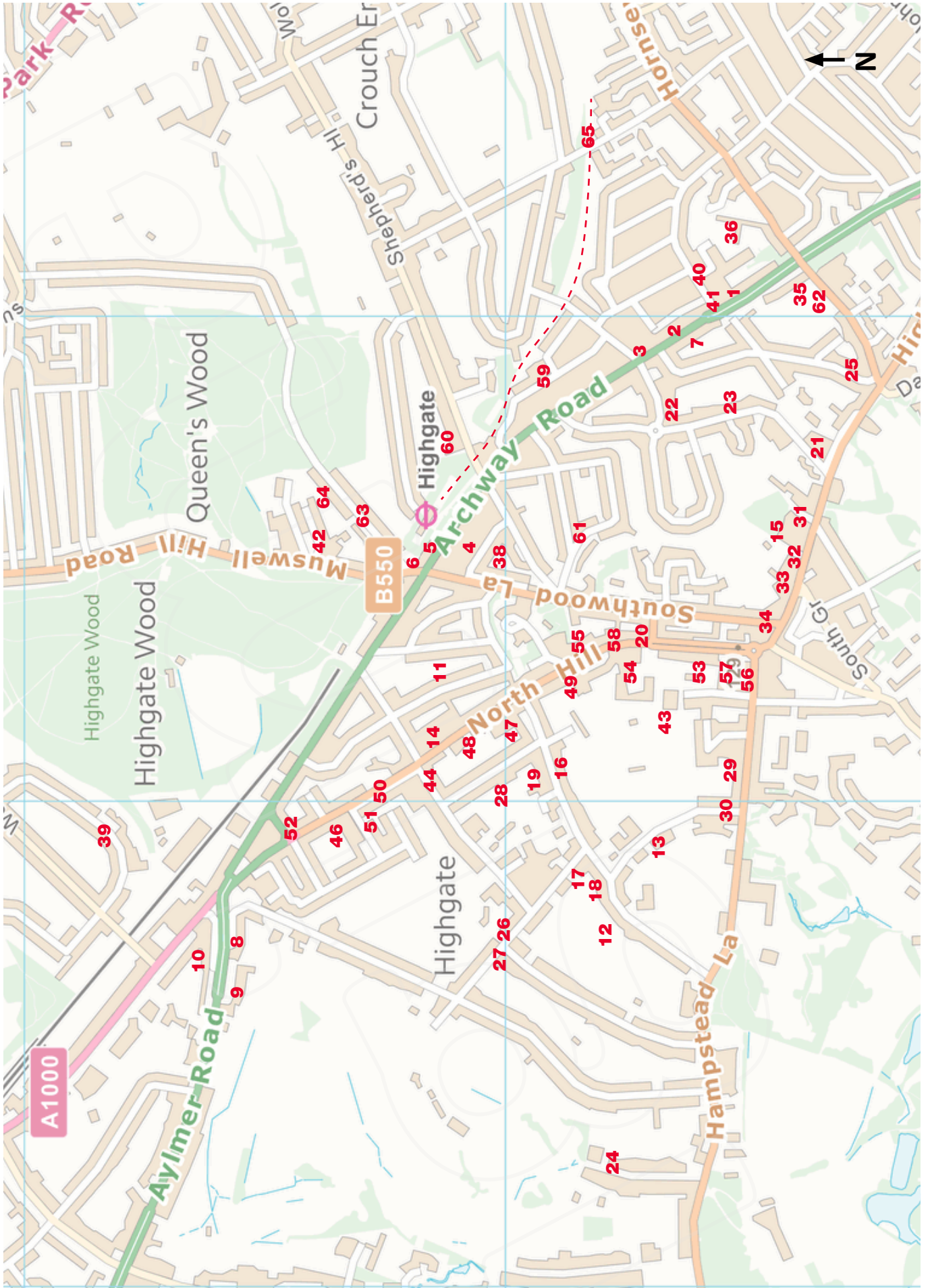
Locally listed buildings in the Harringay neighbourhood area





	Premise number	Street Address	Name/description
1	Coombe's Croft, and Priscilla Close 29a	Conway Road, N15	Former fire station with worker's cottages
2	359	Green Lanes, N4	The Beaconsfield Public House
3	677	Green Lanes, N8	The former Queen's Head public house
4	Woodberry Down Baptist Church	Seven Sisters Road, Tottenham (corner with Vartry Road)	19th century church
5	St ann's Hospital	St Ann's Rd, N15	Hospital Administration Building
6	Orchard House and Mayfield House	St Ann's Hospital, St Ann's Road, Tottenham, N15	Historic houses, part of the St Ann's Hospital site
7	St Ann's Hospital water tower	St Ann's Rd, N15	Water tower, still in use
8	405	St Ann's Rd and 33 Salisbury Rd	Corner shop front with architectural interest
9	289	St Ann's Road, Tottenham, N15	Former St Ann's Police Station
10		Vale Road, N4	Former Maynard's Sweet Factory
11		West Green Rd	West green primary school
12	433 and 435	West Green Road, Tottenham, N15	The former Duke of Cambridge Public House
13	57	Westbury Avenue	The Westbury public house
14		Historic structures of the New River (Harringay, Hornsey and Wood Green)	Historic aqueduct supplying North London

# 5.6. Highgate



Locally listed buildings in the Highgate neighbourhood area





	Premise number	Address	Description/name
1	138	Archway Road	Electricity substation for Northern line by Holden
2	162-198	Archway Road, Highgate, N6	Grand Parade, Arts and Crafts shopping parade
3	200-206 (even)	Archway Road, Highgate, N6	Winchester Hall Tavern (forms a group with Grand Parade)
4	271-351 (odd)	Archway Rd, 2-30 Hillside Gardens, 2-28 Jackson's lane, 114-116 Southwood Lane	Urban Block of outstanding architectural quality
5	412	Archway Road, Highgate, N6	Former railway building
6	414	Archway Road, Highgate, N6	Woodsman Public House
7	203-223 (odd)	Archway Road, Highgate, N6	Group of Victorian Villas in the Gothic style
8	Aylmer Court	Aylmer Road	Arts and Crafts mansion block on prominent corner
9	Whittington Court	Aylmer Road	Art Deco mansion blocks with architectural interest
10	14 to 36	Aylmer Road	Manor Court , Neo-Georgian mansion block
11	27	Bishop's Road	19th century detached house
12	2, 6-12, 7-9, 13	Bishopswood Road	High Victorian detached and semi-detached villas that form a group
13	5	Bishopswood Road	Mills Centre - Highgate School building
14	1 to 16	Bramalea Close, N6 4QD	Modernist housing development with architectural interest
15		Broadbent yard, Highgate Bowl	Small folly at rear with historical interest
16	11	Broadlands Road	Etheldene, 19th century detached house
17	22	Broadlands Road	Gwendoline Simm, detached house and former medical centre
18	24	Broadlands Road	Detached Gothic villa forming a group with 2-13 Bishopswood Rd
19	8	Broadlands Road, Highgate, N6	Detached house
20	1 - 11 (consecutive)	Castle Yard, Highgate, N6	Well preserved early workers' cottages
21	57	Cholmeley Park, Highgate, N6	Channing Cottage, Ddecorative gate house

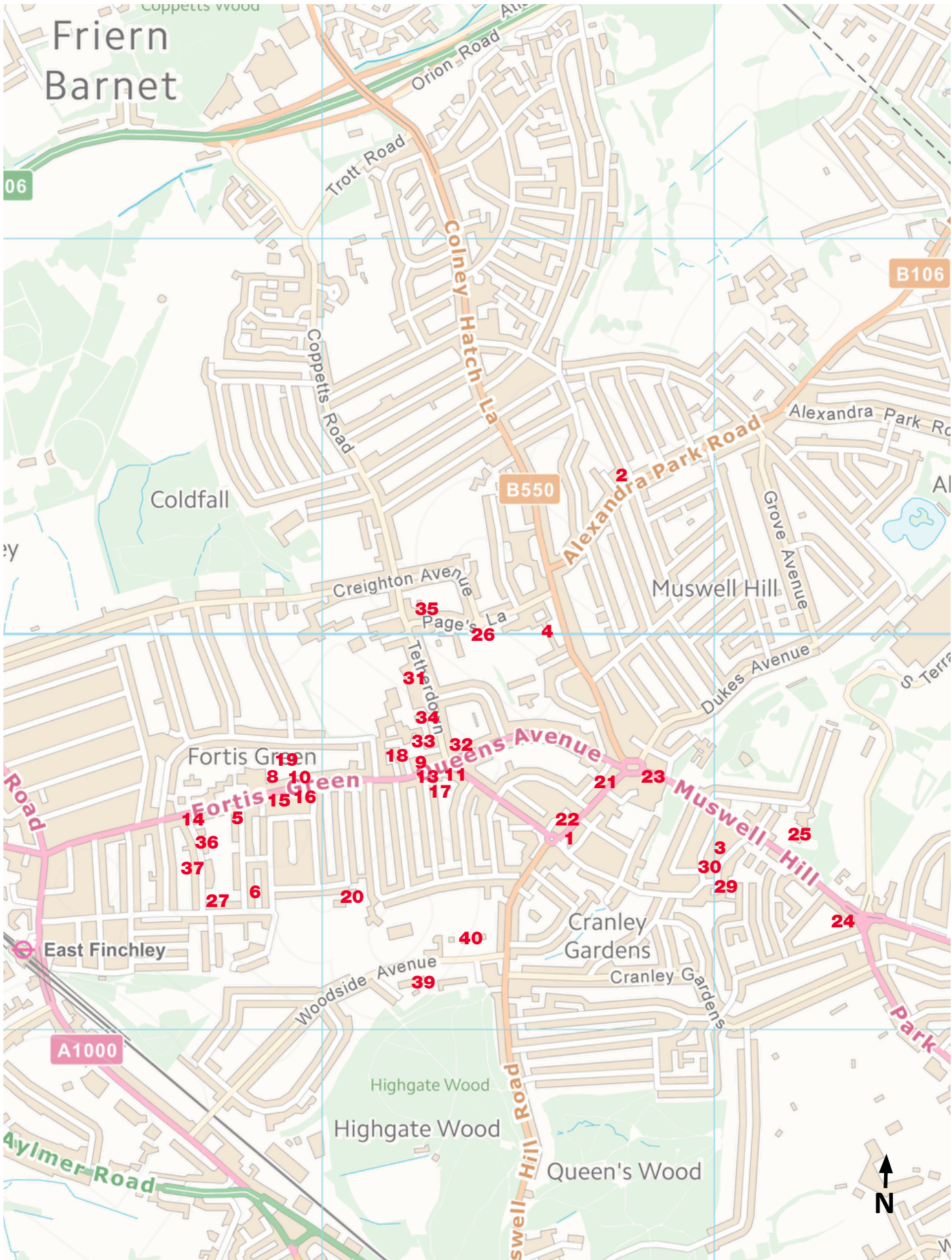
	Premise number	Address	Description/name
22	19	Cholmeley Park, N6	Garden building to rear of 19 with architectural merit
23	53	Cholmeley Park, N6	Lilford House
24	Blue Orchard	Courtenay Avenue	Arts and Crafts detached house by CHB Quennell
25	77	Cromwell Avenue, Highgate, N6	Cloisters court (former Presbyterian Church)
26	6 to 10	Denewood Road (see also 23 View Road)	Prominent detached houses with townscape merit
27		Denewood Road (unadopted section)	Historic lamp posts
28	10-16 (even)	Grange Road, Highgate, N6	The Grange including front boundary wall
29	12 and 14	Hampstead Lane	Marker stone in wall
30	14-22 (even)	Hampstead Lane, Highgate, N6	Group of well preserved gothic villas
31	16	Highgate High Street, N6	Building fronting Duke's Head Yard with carriage arch
32	44	Highgate High Street, N6	Early high street building with shop front
33	50-56 (even)	Highgate High Street, N6	High street building with dutch gable
34	88-90A (even)	Highgate High street, N6	Early high street corner building with 20th century addition
35	Pumping station	Hornsey Lane, Highgate, N6 (10 Tile Kiln Lane)	Historic pumping station including the base of large chimney
36	Northwood Hall	Hornsey Lane, N6	Cruciform Art Deco mansion block by George Bright
38	44-60	Jackson's lane, 1-25 Hillside gardens, 86-112 Southwood lane, N6	Southwood House Estate, Modernist housing
39	45	Lanchester Road, N6 4SX	The Tudor House, tudor revival 'model house' with historical interest
40	St Augustine's Church	Langdon Park Rd	St Augustine's vicarage
41	St Augustine's Church	Langdon Park Rd	St Augustine's Church Hall
42	8-12 (even)	Muswell Hill Road, N10	Terrace of early cottages
43	31	North Grove	Copper Beech, modernist flats
44		North Hill (Rowlands Close)	Historic fire hydrant outside Rowlands close
45	Highcroft	North Hill	Historic milestones outside Highcroft
46	159 to 177	North Hill	Well preserved double fronted cottages
47	33	North Hill	Mission Hall
48	57	North Hill	Historic drinking fountain outside 57
49	9	North Hill	Walter Segal's House
50		North Hill between Storey Road and View road	Historic bank and railings



	Premise number	Address	Description/name
51	123 and 125	North Hill, Highgate, N6	Pair of early 19th century semi-detached cottages
52	88 and 90	North Hill, Highgate, N6	Terraced houses with former workshop
53	25	North Road	Red lion and Sun Public House
54	57	North Road	Fire station flats
55	98	North Road	The Wrestler's Public House
56		North Road, corner of Hampstead lane	Historic fire hydrant
57	1-11 (odd)	North Road, Highgate, N6	Prominent terrace with pavillions
58	60-86 (even)	North Road, Highgate, N6	Well preserved group of Edwardian cottages with townscape interest
59	1A and 1B	Orchard Road, Highgate, N6	Pair of early 19th century semi-detached cottages
60	1	Shepherds hill, Highgate, N6	Highgate branch library
61	28-30	Southwood Lawn Rd	Prominent pair of detached gothic Victorian villas with townscape interest
62		Tile Kiln Lane, Highgate, N6	Historic public footpath sign
63	30	Wood Lane, Highgate, N6	Early 19th century house
64	41 - 57 (odd)	Wood Lane, Highgate, N6	Group of very well preserved mid 19th century semi-detached houses
		Parkland Walk and associated historic structures (Highgate, Crouch End and Stroud Green)	Former railway line (now a park) including a number of historic bridges, platforms and other structures

5.7.

Muswell Hill



Locally listed buildings in the Muswell Hill neighbourhood area



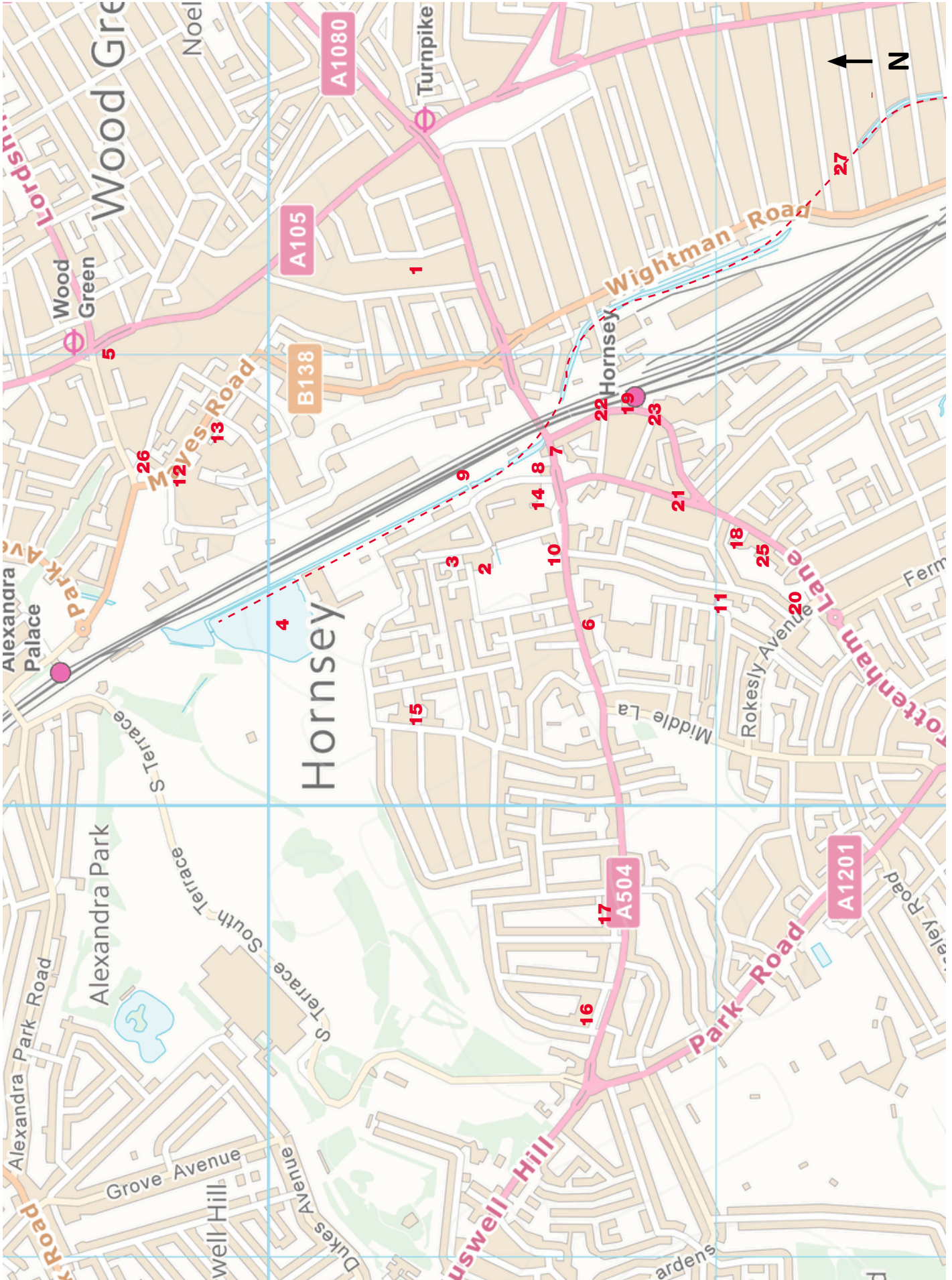


	Premise number	Street Address	Name/description
1	26-30 (even)	Muswell Hill Broadway, N10	Well Preserved corner shopping parade
2	St Andrew's Church	Alexandra Park Road	St Andrew's Church, Hall and Vicarage
3	105 - 107 (odd),	St James's Lane, N10	Early cottages
4	3-7 (odd)	Colney Hatch Lane	Early houses in large plots
5	37	Eastern Road, Fortis Green, N2	19th century detached house
6	2-18 (even)	Eastern Road, Fortis Green, N2	Group of well preserved victorian semi-detached houses
7	11-21	Firs Parade	Shopping Parade
8	7 and 8	Fortis Green	Denmark Terrace
9	Woodside, Twyford Court and Long Ridges	Fortis Green	High quality edwardian mansion blocks
10	94	Fortis Green, N2	Bomarsund, early detached house
11	Fortis Court	Fortis Green Road	Prominent mansion block
13	Fairport	Fortis Green, Muswell Hill, N10	Detached house with architectural interest (now a health centre)
14	79 and 81	Fortis Green, N2	Early demi-detached houses
15	103	Fortis Green, N2	Clissold Arms Public House
16	115	Fortis Green, N2	Police Station
17	1-4 (consecutive)	Field cottages, Fortis Green, N2	Terrace of cottages
18	1-4 (consecutive)	Woodside cottages, Fortis Green, N2	Group of early mews cottages behind denmark terrace
19	4-7 (consecutive)	Fortis Green, N2	Terrace of cottages
20	2	Lauradale Road, N2	Well preserved Arts and Crafts Style building
21	91-217 (odd)	Muswell Hill Broadway	Shopping Parade
22	1-89 (odd)	Muswell Hill Broadway	Princes Parade
23	258 and 260	Muswell Hill Broadway, N10	Former United Dairies building
24	1 and 3	Muswell Hill, N10	Victoria Stakes public house
25	Grove Lodge	Muswell Hill, N10	large detached house in grounds

	Premise number	Street Address	Name/description
26	Whitehall Lodge	Pages Lane, Muswell Hill, N10	Art Deco apartment building
27	16-22 (even)	Southern Road, Fortis Green, N2	Group of semi-detached houses
28	91-97 (odd)	Southwood Lane, Highgate, N6	Group of well preserved 19th century houses with arched dormers
29	108 and 110	St James's Lane N10	Early semi-detached cottages
30	101 and 103	St James's Lane, N10	Willow Cottage
31		Tetherdown	Muswell Hill Synagogue
32	Muswell Hill United Reformed Church	Tetherdown	Church building
33	Tetherdown hall and cottages	Tetherdown, Muswell Hill, N10	Community hall with distinctive architecture
34	13	Tetherdown, Muswell Hill, N10	early semi-detached house
35	1-5 (consecutive)	Victoria Cottages, Pages Lane, Muswell Hill, N10	Well preserved worker's cottages
36	14	Western Road, Fortis Green, N2	Double-fronted detached house
37	17	Western Road, Fortis Green, N2	Double-fronted detached house
38		Woodside Avenue, Muswell Hill	Victorian Sewer vents on page's hill
39	TWA Fortis Green Pump House	Woodside Avenue, Muswell Hill, N10	Large Victorian pump house in grounds
40	Roseneath and Norton Lees	Woodside Square, Woodside Avenue, Muswell Hill, N10	Converted detached houses



## 5.8. Hornsey



Locally listed buildings in the Hornsey neighbourhood area



	Premise number	Street Address	Name/description
1	23	Burghley Road, N8	Former sewage pumping station
2		Cross Lane N8	Campsbourne Well House
3	10	Moselle Close, Cross Lane, N8	Moselle Cottage
4	Filter beds	New River, Hornsey	Filter beds of 1859 and 1879
5	203	High Road, Wood Green	Former Nag's Head public house
6	62	High Street, Hornsey, E8	The Three Compasses public house
7	120	High Street, Hornsey, E8	Bank Chambers
8	TWA waterworks gatehouse	High street, Hornsey, N8	Waterworks gatehouse
9	Sluice house on New River	High street, Hornsey, N8	1859 Sluice House on New River
10	31	High street, Hornsey, N8	Former St Mary's Parish Hall
11	122	Hillfield Avenue, N8	Kitchener House
12	109	Mayes Road, Wood Green, N22	Cambridge House
13	83	Mayes Road, Wood Green, N22	Former Duke of Edinburgh Public House
14	Former Hornsey Pumping station	New River Avenue, N8	Large Victorian former pump house
15	Campsbourne School	Nightingale Lane, N8	Early 20th century board school
16	Moravian Church	Priory Road, N8	Red brick church with stone dressings
17	30-40 (even)	Priory Road, N8	Group of large semi-detached houses
18	98	Tottenham Lane	Hornsey Police Station
19		Tottenham lane, Hornsey	Hornsey rail station
20		Tottenham Lane, N8	Old school house on corner of Rokesly Avenue
21	86-92 (even)	Tottenham Lane, N8 (corner of church lane)	Prominent corner building with shops





	Premise number	Street Address	Name/description
22	1-3 (consecutive)	Tottenham Lane, N8	Timber framed chalet structure adjoining Hornsey Rail Station
23	7	Tottenham Lane, N8	Former Lotus Motor Racing Car factory
25	128	Tottenham Lane, N8	The Hope and Anchor Public House
26	5-8 and 9-17 (consecutive)	Tower Terrace, Mayes Road, Wood Green, N22	
27		Historic structures of the New River (Harringay, Hornsey and Wood Green)	Historic aqueduct supplying North London

5.9.

Noel Park and Lordship Lane



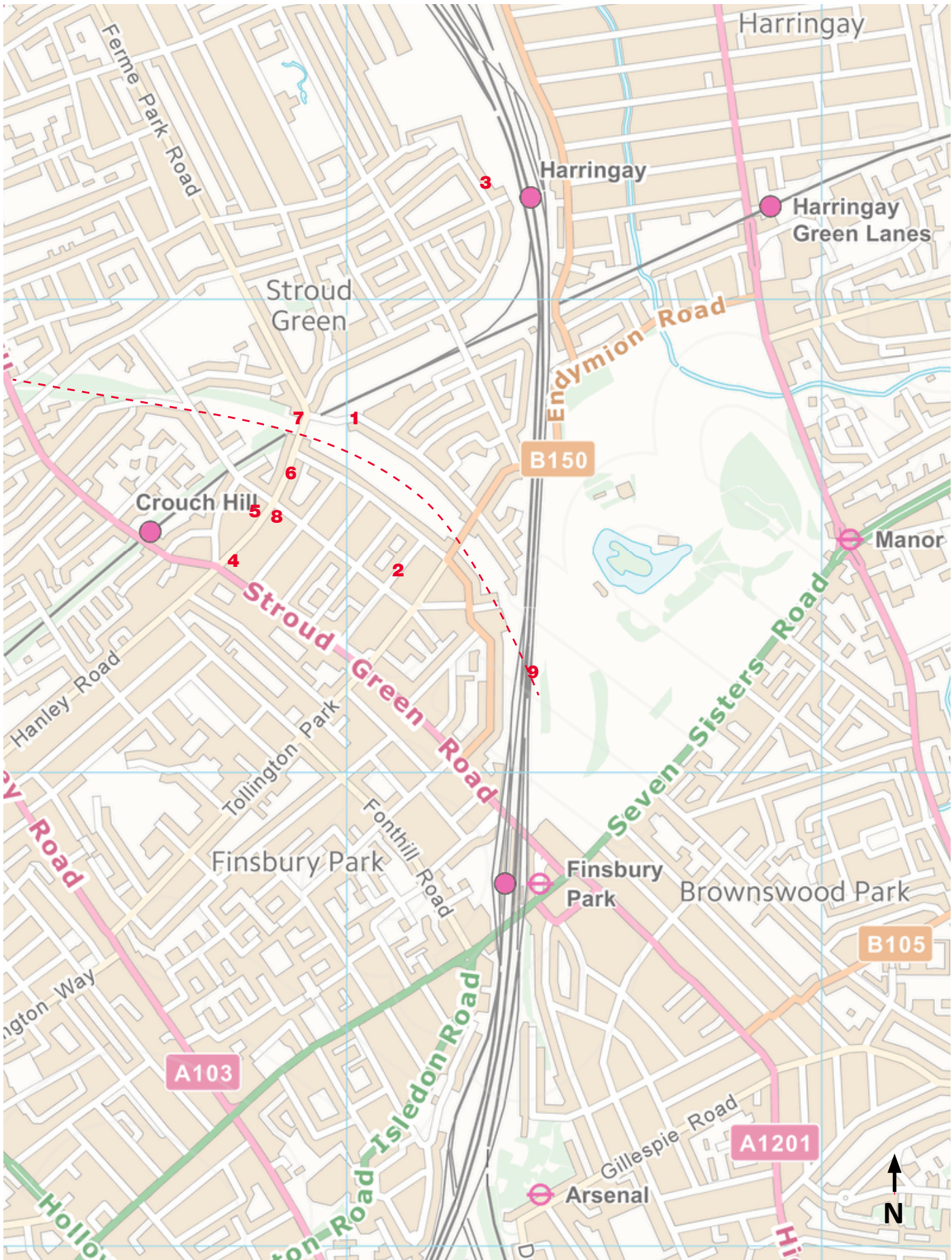
Locally listed buildings in Noel Park and Lordship Lane neighbourhood area





	Premise number	Street Address	Name/description
1	St Thomas More School	Glendale Avenue, N22	School building with cupola
2	Woodside House	High Road, Wood Green	Detached house in grounds, now in civic use
3	4-7 (consecutive)	Stuart Crescent, N22	Varied group of Victorian houses with architectural interest
4	33	Devonshire road	Andy Ludlow House, former hotel
5	82	Bounds green Rd, N11	The Ranelagh public house,
6	Cheapside Parade	Wood Green High Rd	Victorian shopping parade contemporary with Noel Park estate
7	13-27	Station Rd, N22	The Green Rooms
8		Historic structures of the New River (Harringay, Hornsey and Wood Green)	Historic aqueduct supplying North London

# 5.10 Stroud Green



Locally listed buildings in the Stroud Green neighbourhood area





	Premise number	Street Address	Name/description
1	91	Lancaster Road	Well detailed gothic house
2	28-38 (even)	Osbourne Road, Stroud Green, N4	
3		Stapleton Hall Road	Stroud Green Branch Library
4	2	Stapleton Hall Road	Cast iron boundary marker
5	19 to 41 (odd)	Stapleton Hall Road, N4	Decorated terraced houses
6	40-52 (even)	Stapleton Hall Road, N4	Decorated terraced houses
7	73	Stapleton Hall Road, N4	Tudor Community Centre
8	68-78 (even)	Victoria Road, N4	terraced houses with architectural interest
9		Parkland Walk and associated historic structures (Highgate, Crouch End and Stroud Green)	Former railway line (now a park) including a number of historic bridges, platforms and other structures

# 5.11 Tottenham



Locally listed buildings in the Tottenham neighbourhood area





	Premise number	Street Address	Name/description
1	25	Ashley Road, N17	Berol House (former Eagle Pencil Works)
2	13	Birkbeck Road, N17	Double fronted mid-Victorian house with cornice
3	St Francis De Sales	Brereton Road, Tottenham, N17	Church and primary school
4	Brethren Chapel	Brook Street, Tottenham, N17	Modest chapel concealed in allyway (off High Road)
5	1-18 (consecutive)	Bruce Castle Court, Lordship Lane, Tottenham, N17	Art Deco apartment building
	119	Bruce Grove, Tottenham, N17	Former cinema
7		Cemetery Road, Tottenham, N17	Cemetery Gates, Piers, Walls and railings
8	1-15	Cemetery Road, Tottenham, N17	Modest cottages
9		Chapel Place, Tottenham, N17	Former Catholic Chapel and Pastor's house
10	Baptist Hall	Chapel Stones, Tottenham, N17	
11	1	Chesnut Road, Tottenham, N17	Stoneleigh
12		Church Lane, Tottenham	Former lodge to cemetery (now mortuary) by Mummery and Plumbe
13	Parkview Prep School	Church Lane, Tottenham, N17	Group of school buildings
14		Church Lane, Tottenham, N17	Iron Railings to The Lodge (now Haringey Mortuary)
15	168 and 170	Church Road, Tottenham, N17	Antwerp Arms public house
16	78-84 (even)	Clyde Circus, Tottenham, N15	Houses with townscape interest
17	74-76	Clyde Circus, Tottenham, N15	Pair of early houses
18	30 and 30A	Clyde Road, Tottenham, N15	2 villas on an old post office site, elaborate gothic detailing
19		Compton Crescent	The Old Library Building
20	2	Somerset Road, Tottenham, N17	Cooperative workshops, Former Tottenham Grammar school
21	The High Cross	High Rd (junction with Monument Way)	Former Monument Way public toilets
23	352-366 (even)	High Road Tottenham	Rawlinson Terrace and Synagogue
24	448-454 (even)	High Road Tottenham	former Marks and Spencer
25	502-508 (even)	High Road Tottenham	former Burton's store
26	480	High Road Tottenham	High street building

	Premise number	Street Address	Name/description
27		High Road, Tottenham (at Bruce Grove)	Bruce Grove rail station
28		High Road, Tottenham	Cattle trough near the borough boundary
29		High Road, Tottenham (at Coombe's Croft library)	Decorative electricity substation adjoining library
30		High Road, Tottenham (at Bruce Grove)	VR Royal Mail Box set in the wall of Bruce Grove station
32	Tottenham College of Technology	High Road, Tottenham	including front boundary wall, gates and railings
33	641-663 (odd)	High Road, Tottenham	Criterion buildings
34	665-683 (odd)	High Road, Tottenham	Criterion buildings/Dean's corner
35	527-543 (odd)	High Road, Tottenham	High street buildings
36	538-554 (even)	High Road, Tottenham	Windsor Parade 1907
37	455-465 (odd)	High Road, Tottenham	including St Mark's church
38	148-156	High Road, Tottenham	The Dutch Public House
39	522-528 (even)	High Road, Tottenham	High street buildings
40	823-829 (odd)	High Road, Tottenham	High street buildings
41	381-385 (odd)	High Road, Tottenham	High street buildings
42	685-689 (odd)	High Road, Tottenham	High street buildings
43	801 - 805 (odd)	High Road, Tottenham	The Bricklayer's Arms public house
44	703	High Road	Tottenham Community Sports Centre
45	497-499	High Road, Tottenham	The Ship public house
46	227 (including 725 Seven Sisters Road)	High Road, Tottenham	Wards corner building including market
47	295	High Road, Tottenham	Former Jewish hospital including gates and railings
48	320	High Road, Tottenham	Former funeral directors
49	363	High Road, Tottenham	Former Swan public house
50	373	High Road, Tottenham	High street buildings
51	202 and 204	High Road, Tottenham	Former Tottenham Salvation Army Citadel and Hall (Page Green Terrace)
51	413	High Road, Tottenham	Former Felver's hall
51	549	High Road, Tottenham	Former barclays building, now Guzel House
51	551 A	High Road, Tottenham	Former Brewery Morrison yard
52	551 B	High Road, Tottenham	Former electricity substation
53	579A	High Road, Tottenham	Former Barn, now Assunnah Islamic Centre
54	614A to F (inclusive)	High Road, Tottenham	Former Blue School
55	628	High Road, Tottenham	High street buildings
56	676	High Road, Tottenham	Former Whitbread's brewery offices
57	759	High Road, Tottenham	The Whitehall Tavern Public house



	Premise number	Street Address	Name/description
58	809-811	High Road, Tottenham	Early High street building with roof structure
59	389 and 391	high Road, Tottenham	Former Tottenham Library
60	814	High Road, Tottenham	Former Barclays Bank
61	636 and 638	high Road, Tottenham	Former LCS department store
62	841 and 843	High Road, Tottenham	The chequers Public house
63	860 and 862	High Road, Tottenham	The Coach and horse public house
64		Kemble Road, N17	Hall south of St Mary's Church
65	Bruce Castle	King's Road, N17	Bruce Castle Park, Gates and piers
66	Elmhurst boundary wall	Lordship Lane, Tottenham, N17	Scalloped boundary wall to the east of the Elmhurst
67	129	Lordship Lane, Tottenham, N17	The Elmhurst Public house
68	Former pumping station	Marsh lane, Tottenham, N17	Former pumping station (now church)
69	Holly Cottage	Moorefield Road, Tottenham, N17	Former station master's house
70	22	Moorefield Road, Tottenham, N17	Former Royal Mail sorting office
71		Parkhurst Road, Tottenham, N17	Down Lane and Parkhurst school
72		Philip Lane, Tottenham, N15	Holy Trinity Church Vicarage
73	88-94 (even)	Philip Lane, Tottenham, N15	Forster Cottages
74	34	Scotland Green, Tottenham, N17	The Victoria Public House
75	30 and 32	Scotland Green, Tottenham, N17	Early terrace with townscape interest
76	36 and 38	Scotland Green, Tottenham, N17	Early terrace with townscape interest
77	40 and 42	Scotland Green, Tottenham, N17	The Two Brewers public house
78	530	Seven sister's road, N15	Telephone exchange
79	558 - 570	Seven Sisters Road	Telephone exchange building
80	618	Seven Sisters Road, Tottenham, N15	Woodberry Tavern
81	The green school	Somerset Road, Tottenham, N17	At rear of Grammar school
82	Reid Piano Factory	St Ann's Rd	Reid Piano Factory extension to rear (industrial buildings)
83		St Ann's Rd	Chesnuds park gates, piers and railing
84		St Ann's Rd	Chesnuds park horse skeleton
85	182-184	St Ann's Road, Tottenham, N15	Reid Piano Factory
86	277	St Ann's Road, Tottenham, N15	Former St Mary's Priory/convent
87	St Paul's and All Hallows C of E Infants school	Park Lane, London, N17 0HH	Group of school buildings
88	39	Talbot Road, Tottenham, N15	Early detached house
89	31 and 33	Talbot Road, Tottenham, N15	Early semi-detached houses
90	Risley Avenue School	The Roundway, Tottenham, N17	Group of school buildings

## 6. Appendices

### 6.1. Appendix 1 - List entries in alphabetical order by street

A		
St Andrew's Church	Alexandra Park Road	St Andrew's Church, Hall and Vicarage
271-351 (odd)	Archway Rd, 2-30 Hillside Gardens, 2-28 Jackson's lane, 114-116 Southwood Lane	Urban Block of outstanding architectural quality
138	Archway Road	Electricity substation for Northern line by Holden
162-198	Archway Road, Highgate, N6	Grand Parade, Arts and Crafts shopping parade
200-206 (even)	Archway Road, Highgate, N6	Winchester Hall Tavern (forms a group with Grand Parade)
412	Archway Road, Highgate, N6	Former railway building
414	Archway Road, Highgate, N6	Woodsmen Public House
25	Ashley Road, N17	Berol House (former Eagle Pencil Works)
Aylmer Court	Aylmer Road	Arts and Crafts mansion block on prominent corner
Whittington Court	Aylmer Road	Art Deco mansion blocks with architectural interest
14 to 36	Aylmer Road	Manor Court, Neo-Georgian mansion block
B		
1-6 (consecutive)	Back Lane, Crouch End, N8	Topsfield Cottages
13	Birkbeck Road, N17	Double fronted mid-Victorian house with cornice
27	Bishop's Road	19th century detached house
5	Bishopswood Road	Mills Centre - Highgate School building
2, 6-12, 7-9, 13	Bishopswood Road	High Victorian detached and semi-detached villas that form a group
82	Bounds green Rd, N11	The Ranelagh public house,
1 to 16	Bramalea Close, N6 4QD	Modernist housing development with architectural interest
St Francis De Sales	Brereton Road, Tottenham, N17	Church and primary school
1-15 (odd)	Bridge Road, Wood Green, N22	Terrace of 19th century workers cottages
	Broadbent yard, Highgate Bowl	Small folly at rear with historical interest
11	Broadlands Road	Etheldene, 19th century detached house
22	Broadlands Road	Gwendoline Simm, detached house and former medical centre
24	Broadlands Road	Detached Gothic villa forming a group with 2-13 Bishopswood Rd



8	Broadlands Road, Highgate, N6	Detached house
Brethren Chapel	Brook Street, Tottenham, N17	Modest chapel concealed in allyway (off High Road)
1-18 (consecutive)	Bruce Castle Court, Lordship Lane, Tottenham, N17	Art Deco apartment building
119	Bruce Grove, Tottenham, N17	Former cinema
23	Burghley Road, N8	Former sewage pumping station

## C

1 - 11 (consecutive)	Castle Yard, Highgate, N6	Well preserved early workers' cottages
	Cemetery Road, Tottenham, N17	Cemetery Gates, Piers, Walls and railings
1-15	Cemetery Road, Tottenham, N17	Modest cottages
	Chapel Place, Tottenham, N17	Former Catholic Chapel and Pastor's house
Baptist Hall	Chapel Stones, Tottenham, N17	
1	Chesnut Road, Tottenham, N17	Stoneleigh
57	Cholmeley Park, Highgate, N6	Decorative gate house
19	Cholmeley Park, N6	Garden building to rear of 19 with architectural merit
53	Cholmeley Park, N6	Lilford House
	Church Lane, Tottenham	Former lodge to cemetery (now mortuary) by Mummery and Plumbe
Parkview Prep School	Church Lane, Tottenham, N17	Group of school buildings
	Church Lane, Tottenham, N17	Iron Railings to The Lodge (now Haringey Mortuary)
168 and 170	Church Road, Tottenham, N17	Antwerp Arms public house
78-84 (even)	Clyde Circus, Tottenham, N15	Houses with townscape interest
74-76	Clyde Circus, Tottenham, N15	Pair of early houses
30 and 30A	Clyde Road, Tottenham, N15	2 villas on an old post office site, elaborate gothic detailing
	Compton Crescent	The Old Library Building
Coombe's Croft	Conway Road, N15	Former fire station with worker's cottages
Blue Orchard	Courtenay Avenue	Arts and Crafts detached house by CHB Quennell
6-12 (even)	Crescent Road, Crouch End, n8	Group of gothic villas
15-19 (odd)	Crescent Road, Crouch End, N8	Group of gothic villas
18 and 22	Crescent Road, Crouch End, N8	Group of gothic villas
77	Cromwell Avenue, Highgate, N6	Cloisters court (former Presbyterian Church)
	Cross Lane N8	Campsbourne Well House
113	Crouch Hill, Crouch End, N8	Detached house with architectural merit
Adjacent to 132	Crouch Hill, Crouch End, N8	Former Floral Hall, glazed shop building
145	Crouch Hill, Crouch End, N8	Park Chapel

## D

6 to 10	Denewood Road (see also 23 View Road)	Prominent detached houses with townscape merit
	Denewood Road (unadopted section)	Historic lamp posts
33	Devonshire road	Andy Ludlow House, former hotel
2-24 (even)	Dorset Road, Wood Green, N22	Terrace of 19th century cottages
15-19 (odd)	Dorset Road, Wood Green, N22	19th century houses with dutch gables

E		
2-18 (even)	Eastern Road, Fortis Green, N2	Group of well preserved victorian semi-detached houses
37	Eastern Road, Fortis Green, N2	19th century detached house
F		
1-4 (consecutive)	Field cottages, Fortis Green, N2	Terrace of cottages
St Barnabas	Finsbury Rd, N22 8PA	Greek orthox church with spire
1	Finsbury Rd, Wood Green, London N22 8PA	The Prince public house
11-21	Firs Parade	Shopping Parade
Woodside, Twyford Court and Long Ridges	Fortis Green	High quality edwardian masnion blocks
7 and 8	Fortis Green	Denmark Terrace
Fortis Court	Fortis Green Road	Prominent mansion block
Fairport	Fortis Green, Muswell Hill, N10	Detached house with architectural interest (now a health centre)
4-7 (consecutive)	Fortis Green, N2	Terrace of cottages
94	Fortis Green, N2	Bomarsund, early detached house
103	Fortis Green, N2	Clissold Arms Public House
115	Fortis Green, N2	Police Station
79 and 81	Fortis Green, N2	Early demi-detached houses
G		
2-8 (even)	Gladwell Road, N8	Group of mid 19th century detached houses
St Thomas More School	Glendale Avenue, N22	School building with cupola
10-16 (even)	Grange Road, Highgate, N6	The Grange including front boundary wall
359	Green Lanes, N4	The Beaconsfield Public House
677	Green Lanes, N8	Queen's Head public house, Frobisher Road
H		
12 and 14	Hampstead Lane	Marker stone in wall
14-22 (even)	Hampstead Lane, Highgate, N6	Group of well preserved gothic villas
The High Cross	High Rd (junction with Monument Way)	Former Monument Way public toilets
703	High Road	Tottenham Community Sports Centre
352-366 (even)	High Road Tottenham	Rawlinson Terrace and Synagogue
448-454 (even)	High Road Tottenham	former Marks and Spencer
502-508 (even)	High Road Tottenham	former Burton's store
480	High Road Tottenham	High street building
	High Road, Tottenham	Cattle trough near the borough boundary
Tottenham College of Technology	High Road, Tottenham	including front boundary wall, gates and railings
641-663 (odd)	High Road, Tottenham	Criterion buildings



665-683 (odd)	High Road, Tottenham	Criterion buildings/Dean's corner
527-543 (odd)	High Road, Tottenham	High street buildings
538-554 (even)	High Road, Tottenham	Windsor Parade 1907
455-465 (odd)	High Road, Tottenham	including St Mark's church
148-156	High Road, Tottenham	The Dutch Public House
522-528 (even)	High Road, Tottenham	High street buildings
823-829 (odd)	High Road, Tottenham	High street buildings
381-385 (odd)	High Road, Tottenham	High street buildings
685-689 (odd)	High Road, Tottenham	High street buildings
801 - 805 (odd)	High Road, Tottenham	The Bricklayer's Arms public house
497-499	High Road, Tottenham	The Ship public house
809-811	High Road, Tottenham	Early High street building with roof structure
295	High Road, Tottenham	Former Jewish hospital including gates and railings
320	High Road, Tottenham	Former funeral directors
363	High Road, Tottenham	Former Swan public house
373	High Road, Tottenham	High street buildings
202 and 204	High Road, Tottenham	Former Tottenham Salvation Army Citadel and Hall (Page Green Terrace)
413	High Road, Tottenham	Former Felver's hall
549	High Road, Tottenham	Former Barclays building, now Guzel House
551 A	High Road, Tottenham	Former Brewery Morrison yard
551 B	High Road, Tottenham	Former electricity substation
579A	High Road, Tottenham	Former Barn, now Assunnah Islamic Centre
614A to F (inclusive)	High Road, Tottenham	Former Blue School
628	High Road, Tottenham	High street buildings
676	High Road, Tottenham	Former Whitbread's brewery offices
759	High Road, Tottenham	The Whitehall Tavern Public house
389 and 391	High Road, Tottenham	Former Tottenham Library
814	High Road, Tottenham	Former Barclays Bank
227 (including 725 Seven Sisters Road)	High Road, Tottenham	Wards corner building including market
636 and 638	High Road, Tottenham	Former LCS department store
841 and 843	High Road, Tottenham	The chequers Public house
860 and 862	High Road, Tottenham	The Coach and horse public house
	High Road, Tottenham (at Bruce Grove)	Bruce Grove rail station
	High Road, Tottenham (at Bruce Grove)	VR Royal Mail Box set in the wall of Bruce Grove station
	High Road, Tottenham (at Coombe's Croft library)	Decorative electricity substation adjoining library
Woodside House	High Road, Wood Green	Detached house in grounds, now in civic use
203	High Road, Wood Green	Former Nag's Head public house
287	High Road, Wood Green	Former Fishmonger's Arms Public House
62	High Street, Hornsey, E8	The Three Compasses public house

120	High Street, Hornsey, E8	Bank Chambers
TWA waterworks gatehouse	High street, Hornsey, N8	Waterworks gatehouse
Sluice house on New River	High street, Hornsey, N8	1859 Sluice House on New River
31	High street, Hornsey, N8	Former St Mary's Parish Hall
50-56 (even)	Highgate High Street, N6	High street building with dutch gable
88-90A (even)	Highgate High street, N6	Early high street corner building with 20th century addition
16	Highgate High Street, N6	Building fronting Duke's Head Yard with carriage arch
44	Highgate High Street, N6	Early high street building with shop front
122	Hillfield Avenue, N8	Kitchener House
	Historic structures of the New River (Harringay, Hornsey and Wood Green)	Historic aqueduct supplying North London
Pumping station	Hornsey Lane, Highgate, N6	Historic pumping station including the base of large chimney
131 and 133	Hornsey Lane, Highgate, N6	Semi detached Victorian villas
Northwood Hall	Hornsey Lane, N6	Cruciform Art Deco mansion block by George Bright
<b>I</b>		
<b>J</b>		
44-60	Jackson's lane, 1-25 Hillside gardens, 86-112 Southwood lane, N6	Southwood House Estate, Modernist housing
<b>K</b>		
	Kemble Road, N17	Hall south of St Mary's Church
Bruce Castle	King's Road, N17	Bruce Castle Park, Gates and piers
<b>L</b>		
91	Lancaster Road	Well detailed gothic house
45	Lanchester Road, N6 4SX	The Tudor House, tudor revival 'model house' with historical interest
St Augustine's Church	Langdon Park Rd	St Augustine's vicarage
St Augustine's Church	Langdon Park Rd	St Augustine's Church Hall
2	Lauradale Road, N2	Well preserved Arts and Crafts Style building
Elmhurst boundary wall	Lordship Lane, Tottenham, N17	Scalloped boundary wall to the east of the Elmhurst
129	Lordship Lane, Tottenham, N17	The Elmhurst Public house
<b>M</b>		
Former pumping station	Marsh lane, Tottenham, N17	Former pumping station (now church)
83	Mayes Road, Wood Green, N22	Former Duke of Edinburgh Public House
109	Mayes Road, Wood Green, N22	Cambridge House
Holly Cottage	Moorefield Road, Tottenham, N17	Former station master's house
22	Moorefield Road, Tottenham, N17	Former Royal Mail sorting office
10	Moselle Close, Cross Lane, N8	Moselle Cottage
91-217 (odd)	Muswell Hill Broadway	Shopping Parade



1-89 (odd)	Muswell Hill Broadway	Princes Parade
26-30 (even)	Muswell Hill Broadway, N10	Well Preserved corner shopping parade
258 and 260	Muswell Hill Broadway, N10	Former United Dairies building
8-12 (even)	Muswell Hill Road, N10	Terrace of early cottages
Grove Lodge	Muswell Hill, N10	large detached house in grounds
1 and 3	Muswell Hill, N10	Victoria Stakes public house

## N

Former Hornsey Pumping station	New River Avenue, N8	Large Victorian former pump house
Filter beds	New River, Hornsey	Filter beds of 1859 and 1879
Campsbourne School	Nightingale Lane, N8	Early 20th century board school
31	North Grove	Copper Beech, modernist flats
Highcroft	North Hill	Historic milestones outside Highcroft
9	North Hill	Walter Segal's House
33	North Hill	Mission Hall
57	North Hill	Historic drinking fountain outside 57
159 to 177	North Hill	Well preserved double fronted cottages
	North Hill (Rowlands Close)	Historic fire hydrant outside Rowlands close
	North Hill between Storey Road and View road	Historic bank and railings
88 and 90	North Hill, Highgate, N6	Terraced houses with former workshop
123 and 125	North Hill, Highgate, N6	Pair of early 19th century semi-detached cottages
25	North Road	Red lion and Sun Public House
57	North Road	Fire station flats
98	North Road	The Wrestler's Public House
	North Road, corner of Hampstead lane	Historic fire hydrant
60-86 (even)	North Road, Highgate, N6	Well preserved group of Edwardian cottages with townscape interest
1-11 (odd)	North Road, Highgate, N6	Prominent terrace with pavillions

## O

1A and 1B	Orchard Road, Highgate, N6	Pair of early 19th century semi-detached cottages
28-38 (even)	Osbourne Road, Stroud Green, N4	

## P

Whitehall Lodge	Pages Lane, Muswell Hill, N10	Art Deco apartment building
St Paul's and All Hallows C of E Infants school	Park Lane, London, N17 0HH	Group of school buildings
	Parkhurst Road, Tottenham, N17	Down Lane and Parkhurst school
	Parkland Walk and associated historic structures (Highgate, Crouch End and Stroud Green)	Former railway line (now a park) including a number of historic bridges, platforms and other structures
	Philip Lane, Tottenham, N15	Holy Trinity Church Vicarage
88-94 (even)	Philip Lane, Tottenham, N15	Forster Cottages
Moravian Church	Priory Road, N8	Red brick church with stone dressings

30-40 (even)	Priory Road, N8	Group of large semi-detached houses
<b>Q</b>		
<b>R</b>		
<b>S</b>		
34	Scotland Green, Tottenham, N17	The Victoria Public House
30 and 32	Scotland Green, Tottenham, N17	Early terrace with townscape interest
36 and 38	Scotland Green, Tottenham, N17	Early terrace with townscape interest
40 and 42	Scotland Green, Tottenham, N17	The Two Brewers public house
530	Seven sister's road, N15	Telephone exchange
558 - 570	Seven Sisters Road	Telephone exchange building
Woodberry Down Baptist Church	Seven Sisters Road, Tottenham (corner with Vartry Road	19th century church
618	Seven Sisters Road, Tottenham, N15	Woodberry Tavern
Aylmer Court	Sheldon Avenue	Mansion block
1	Shepherds hill, Highgate, N6	Highgate branch library
The green school	Somerset Road, Tottenham, N17	At rear of Grammar school
2	Somerset Road, Tottenham, N17	Cooperative workshops, Former Tottenham Grammar school
16-22 (even)	Southern Road, Fortis Green, N2	Group of semi-detached houses
91-97 (odd)	Southwood Lane, Highgate, N6	Group of well preserved 19th century houses with arched dormers
28-30	Southwood Lawn Rd	Prominent pair of detached gothic Victorian villas with townscape interest
Orchard House and Mayfield House	St Ann's Hospital, St Ann's Road, Tottenham, N15	Historic houses, part of the St Ann's Hospital site
Reid Piano Factory	St Ann's Rd	Reid Piano Factory extension to rear (industrial buildings)
	St Ann's Rd	Chesnuds park gates, piers and railing
	St Ann's Rd	Chesnuds park horse skeleton
405	St Ann's Rd and 33 Salisbury Rd	Corner shop front with architectural interest
St ann's Hospital	St Ann's Rd, N15	Hospital Administration Building
St Ann's Hospital water tower	St Ann's Rd, N15	Water tower, still in use
182-184	St Ann's Road, Tottenham, N15	Reid Piano Factory
277	St Ann's Road, Tottenham, N15	Former St Mary's Priory/convent
289	St Ann's Road, Tottenham, N15	St Ann's Police Station
108 and 110	St James's Lane N10	Early semi-detached cottages
105 - 107 (odd),	St James's Lane, N10	Early cottages
101 and 103	St James's Lane, N10	Willow Cottage
1	St Loy's Rd, Tottenham	Unusual shop on corner site with townscape interest
	Stapleton Hall Road	Stroud Green Branch Library
2	Stapleton Hall Road	Cast iron boundary marker



40-52 (even)	Stapleton Hall Road, N4	Decorated terraced houses
19 to 41 (odd)	Stapleton Hall Road, N4	Decorated terraced houses
13-27	Station Rd, N22	The Green Rooms
4-7 (consecutive)	Stuart Crescent, N22	Varied group of Victorian houses with architectural interest

## T

39	Talbot Road, Tottenham, N15	Early detached house
31 and 33	Talbot Road, Tottenham, N15	Early semi-detached houses
	Tetherdown	Muswell Hill Synagogue
Muswell Hill United Reformed Church	Tetherdown	Church building
Tetherdown hall and cottages	Tetherdown, Muswell Hill, N10	Community hall with distinctive architecture
13	Tetherdown, Muswell Hill, N10	early semi-detached house
Station building	The Avenue, Muswell Hill, N10	Former Alexandra Palace Rail station building
48	The Broadway Crouch End	Corner building with stone dressing
46	The Broadway, Crouch End	Corner building with stone dressing
6	The Broadway, Crouch End, N8	Early shop building
	Tile Kiln Lane, Highgate, N6	Historic public footpath sign
46 and 46A	Topsfield parade, Crouch end	Very well-preserved Edwardian shop front
98	Tottenham Lane	Hornsey Police Station
	Tottenham lane, Hornsey	Hornsey rail station
	Tottenham Lane, N8	Old school house on corner of Rokesly Avenue
1-3 (consecutive)	Tottenham Lane, N8	Timber framed chalet structure adjoining Hornsey Rail Station
7	Tottenham Lane, N8	Former Lotus Motor Racing Car factory
128	Tottenham Lane, N8	The Hope and Anchor Public House
86-92 (even)	Tottenham Lane, N8 (corner of church lane)	Prominent corner building with shops
5-8 and 9-17 (consecutive)	Tower Terrace, Mayes Road, Wood Green, N22	
St Mary's Greek Orthodox Church	Trinity Road, N22 St Mary's Greek Orthodox Cathedral	Former Methodist Chapel

## U

## V

	Vale Road, N4	Former Maynard's Sweet Factory
1-5 (consecutive)	Victoria Cottages, Pages Lane, Muswell Hill, N10	Well preserved worker's cottages
68-78 (even)	Victoria Road, N4	terraced houses with architectural interest

## W

	West Green Rd	West green primary school
433 and 435	West Green Road, Tottenham, N15	The Duke of Cambridge Public House

57	Westbury Avenue	The Westbury public house
22	Western Rd, Wood Green, N22	Decorium - former public swimming pool
14	Western Road, Fortis Green, N2	Double-fronted detached house
17	Western Road, Fortis Green, N2	Double-fronted detached house
14 and 16	Weston Park, Crouch End, N8	Corner buildings with turrets
Cheapside Parade	Wood Green High Rd	Victorian shopping parade contemporary with Noel Park estate
41 - 57 (odd)	Wood Lane, Highgate, N6	Group of very well preserved mid 19th century semi-detached houses
30	Wood Lane, Highgate, N6	Early 19th century house
	Woodside Avenue, Muswell Hill	Victorian Sewer vents on page's hill
TWA Fortis Green Pump House	Woodside Avenue, Muswell Hill, N10	Large Victorian pump house in grounds
1-4 (consecutive)	Woodside cottages, Fortis Green, N2	Group of early mews cottages behind denmark terrace
Roseneath and Norton Lees	Woodside Square, Woodside Avenue, Muswell Hill, N10	Converted detached houses



## 6.2. Appendix 2 - Buildings and structures recommended for removal from the list

Premise number	Street Address	Description	Reason
253-263 (odd)	Archway Road, Highgate, N6	High street building	Positive contributor to the Highgate Conservation Area
278-310 (even)	Archway Road, Highgate, N6	High street building	Positive contributor to the Highgate Conservation Area
422 and 424	Archway Road, Highgate, N6	High street building	Positive contributor to the Highgate Conservation Area
438 and 440 A	Archway Road, Highgate, N6	High street building	Positive contributor to the Highgate Conservation Area
53-65	Beaufoy Road, Tottenham, N17	Terrace of maisonettes	Positive contributor to the Tottenham Cemetery Conservation Area
16 and 18	Bishopswood Road, Highgate, N6	Red brick detached villas	Positive contributor to the Highgate Conservation Area
22	Bishopswood Road, Highgate, N6	Large detached house	Positive contributor to the Highgate Conservation Area
3	Bishopswood Road, Highgate, N6	Cholmeley House	Demolished (Highgate School development)
11 and 13	Bounds Green Road, Wood Green, N22	Semi-detached houses	Positive contributor to the Trinity Gardens Conservation Area
17-25 (odd)	Bounds Green Road, Wood Green, N22	Terraced houses	Positive contributor to the Highgate Conservation Area
Goldsmiths Cottage at rear	Broadlands Road, Highgate, N6	Cottage at rear (see Denewood Road)	Duplicate list entry
10	Broadlands Road, Highgate, N6	Much altered detached house	Positive contributor to the Highgate Conservation Area
119	Bruce Grove, Tottenham, N17	Part of former cinema	Duplicate list entry
38-41 (consecutive)	Bruce Grove, Tottenham, N17	Terraced houses	Positive contributor to the Bruce Grove Conservation Area
46-54 (consecutive)	Bruce Grove, Tottenham, N17	Terraced houses	Positive contributor to the Bruce Grove Conservation Area
57-67 (consecutive)	Bruce Grove, Tottenham, N17	High street building	Positive contributor to the Bruce Grove Conservation Area
2-32 (even)	Cholmeley Park, Highgate, N6		Positive contributor to the Highgate Conservation Area
46 and 48 (or 1-7 Parklands)	Cholmeley Park, Highgate, N6	Copley Dean	Positive contributor to the Highgate Conservation Area
50	Cholmeley Park, Highgate, N6	Walled Garden, Furnival House	Protected by statutory listing as part of curtilage of Furnival House
	Church Lane, Tottenham, N17	Bruce Castle Park Gates and Piers opposite church	Protected by statutory listing as part of curtilage of Bruce Castle
158 to 166 (even)	Church Road, Tottenham, N17	Terraced houses	Positive contributor to the Bruce Castle Conservation Area
1-19 (consecutive)	Clyde Circus, Tottenham, N15	Terraced houses	Positive contributor to the Clyde Circus Conservation Area

Premise number	Street Address	Description	Reason
High Cross United Reform Church Hall	Colsterworth Road, N15	Church building and hall with alterations	Positive contributor to the Tottenham Green Conservation Area
2-12 (even)	Coppetts Road, Muswell Hill, N10	Semi detached houses with alterations	Positive contributor to the Muswell Hill Conservation Area
1-5 (consecutive)	Crossway Parade, N22	20th century shopping parade	Does not meet listing criteria
83 and 85	Crouch End Hill, N8	Former railway buildings converted to shops	Positive contributor to the Crouch End Conservation Area
118	Crouch Hill, Crouch End, N8	Montague Cottage, now much altered	Positive contributor to the Muswell Hill Conservation Area
Goldsmiths Cottage	Denewood Road, N6	Goldsmiths Cottage (now Courtyard House)	Positive contributor to the Highgate Conservation Area
	Duke's Head Yard, N6	See Highgate High Street	Duplicate listing
759	High Road	Former Whitehall Tavern pub, now altered	Does not meet listing criteria
	Hampstead Lane, Highgate, n6	Parish Marker	Outside of borough boundary
13-15 (consecutive)	Haringey Park, Crouch End, N8	Terraced houses	Positive contributor to the Crouch End Conservation Area
29-32 (consecutive)	Haringey park, Crouch End, N8	Terraced houses	Positive contributor to the Crouch End Conservation Area
2 and 4	Haslemere Road, Crouch End, N8	Detached houses, 4 now in use as a care facility	Positive contributor to the Crouch End Conservation Area
324	High Road Tottenham	High street corner building	Positive contributor to the Tottenham Green Conservation Area
372-376 (even)	High Road Tottenham	Much altered high street building	Positive contributor to the Tottenham Green Conservation Area
406-408	High Road Tottenham	High street buildings, much altered	Positive contributor to the Tottenham Green Conservation Area
412-414	High Road Tottenham	High street buildings, much altered	Positive contributor to the Bruce Grove Conservation Area
462	High Road Tottenham	Early High street building	Positive contributor to the Bruce Grove Conservation Area
482-488 (even)	High Road Tottenham	Terrace of shops, much altered	Positive contributor to the Bruce Grove Conservation Area
492-500 (even)	High Road Tottenham	Edwardian shopping terrace with pargetting	Positive contributor to the Bruce Grove Conservation Area
267-293 (odd)	High Road, Tottenham	Terraced houses, much altered	Positive contributor to the Seven Sisters/ Page Green Conservation Area
310	High Road, Tottenham	High Cross United Reform Church and Hall	Duplicate listing
433 - 441 (odd)	High Road, Tottenham	Early high street buildings, now much altered	Positive contributor to the Tottenham Green Conservation Area



Premise number	Street Address	Description	Reason
479-491 (odd)	High Road, Tottenham	Warner Terrace, much altered	Positive contributor to the Bruce Grove Conservation Area
501-507 (odd)	High Road, Tottenham	High street buildings	Positive contributor to the Tottenham Green Conservation Area
510	High Road, Tottenham	High street building	Positive contributor to the Bruce Grove Conservation Area
510A	High Road, Tottenham	Workshop in yard to rear	Positive contributor to the Bruce Grove Conservation Area
512-520 (even)	High Road, Tottenham	High street buildings	Positive contributor to the Bruce Grove Conservation Area
513-525 (odd)	High Road, Tottenham	High street buildings	Positive contributor to the Bruce Grove Conservation Area
530-536 (even)	High Road, Tottenham	High street buildings	Positive contributor to the Bruce Grove Conservation Area
551 and 553	High Road, Tottenham	High street buildings	Positive contributor to the Bruce Grove Conservation Area
596	High Road, Tottenham	Site of former friends meeting house, now redeveloped	Neutral contributor to the Scotland Green Conservation Area
612	High Road, Tottenham	Former Prince of Wales public house	Positive contributor to the Scotland Green Conservation Area
634	High Road, Tottenham	Former Red Lion public house, corner building	Positive contributor to the North Tottenham Conservation Area
684 A and B	High Road, Tottenham	Former department store building	Positive contributor to the North Tottenham Conservation Area
686-690 (even)	High Road, Tottenham	High street buildings, much altered	Positive contributor to the North Tottenham Conservation Area
698-700	High Road, Tottenham	High street buildings, much altered	Positive contributor to the North Tottenham Conservation Area
704 and 706	High Road, Tottenham	High street buildings, much altered	Positive contributor to the North Tottenham Conservation Area
705	High Road, Tottenham	Early semi-detached house	Positive contributor to the North Tottenham Conservation Area
729	High Road, Tottenham	St Francis de Sales Presbytery	Positive contributor to the North Tottenham Conservation Area
742	High Road, Tottenham	Now demolished	Demolished
743-757 (odd)	High Road, Tottenham	High street buildings, much altered	Do not meet listing criteria
746	High Road, Tottenham	Former Tottenham Dispensary, now demolished	Demolished
748	High Road, Tottenham	The Red House, now demolished	Demolished
750	High Road, Tottenham	The White Hart public house, now demolished	Demolished

Premise number	Street Address	Description	Reason
754-766 (even)	High Road, Tottenham	Now demolished	Demolished
769, 771 and 771 A	High Road, Tottenham	High street buildings	Positive contributor to the North Tottenham Conservation Area
773-779 (odd)	High Road, Tottenham	High street buildings	Positive contributor to the North Tottenham Conservation Area
793 and 795	High Road, Tottenham	Former Nat West Bank	Positive contributor to the North Tottenham Conservation Area
813-817 (odd)	High Road, Tottenham	High street buildings	Positive contributor to the North Tottenham Conservation Area
840-850 (even)	High Road, Tottenham	High street buildings	Positive contributor to the North Tottenham Conservation Area
847-853 (odd)	High Road, Tottenham	High street buildings	Positive contributor to the North Tottenham Conservation Area
High Cross Court	High Road, Tottenham	Courtyard with views to monument	Contributes to the setting of the monument
Wall to the North of 707	High Road, Tottenham	Wall	Protected by statutory listing as part of the curtilage of 707
865	High Road, Tottenham,	High street building now rebuilt as pastiche to match adjacent listed buildings	Neutral contributor to the North Tottenham Conservation Area
347	High Road, Wood Green	Wood Green Police Station, now much altered and extended	Does not meet listing criteria
Wood Green underground station	High Road, Wood Green	Station by Charles Holden	Now statutory Listed
34 - 60 (even)	High Street, Hornsey, E8	High street buildings	Positive contributor to the Hornsey High street Conservation Area
Sluice House	High Street, Hornsey, E8	Sluice house south of filter beds (also see Cross Lane and New River Avenue)	Duplicate listing
81	High street, Hornsey, N8	Langham Cottage and River House	Now demolished
Site of waterwheel adjoining the sluice house	High street, Hornsey, N8	Site of 1859 waterwheel	Duplicate listing
64	Highgate High Street, N6 (rear of)	Rainwater Cistern	Protected by statutory listing of no.64
Southwood Lane	Highgate, N6	Boundary Wall	Positive contributor to the Highgate Conservation Area
139-145 (odd)	Hornsey Lane, Highgate, N6		Positive contributor to the Hornsey High street Conservation Area
77	Hornsey lane, Highgate, N6		Positive contributor to the Hornsey High street Conservation Area
	Jackson's lane, Highgate, N6	Four canon bollards around tree	Positive contributor to the Hornsey High street Conservation Area
Turnpike lane bus station	Langham Road, N15	Turnpike lane bus station and public conveniences	Does not meet listing criteria

Premise number	Street Address	Description	Reason
1A	Lansdowne Road, N17	Former JAP Motor Cycle and Racing Car Engineering works	Does not meet listing criteria
West Green Road, Tottenham, n15	Large industrial building at rear	Tottenham	Does not meet listing criteria
119-125 (odd)	Lordship Lane, Tottenham, N17		Does not meet listing criteria
Bruce Castle gates	Lordship Lane, Tottenham, N17	Wrought Iron entry gates to Bruce Castle incorporating overthrow and lantern housing)	Protected by statutory listing as part of the curtilage of Bruce Castle
Wall of Magistrate's Court	Lordship Lane, Tottenham, N17	Wall on the east boundary of the magistrate's court (former Elmslea garden wall)	Protected by statutory listing as part of the curtilage of Bruce Castle
9-35 (odd)	Middle Lane, Crouch End, N8	Terraced houses	Positive contributors to the Crouch End Conservation Area
20-54 even and 15-45 odd	Mount Pleasant Crescent	Terraced housing	Positive Contributors to the Stroud Green Conservation Area
10	Moselle close, Hornsey, N8	Moselle Cottage	Duplicate listing
396-402 (even)	Muswell Hill Broadway, N10		Positive contributors to the Muswell Hill Conservation Area
86 and 88	Muswell Hill Broadway, N10	Midland Bank	Positive contributors to the Crouch End Conservation Area
152	Muswell Hill Road, N10	Cranley Dene Court original building	Now demolished
1 and 3	New Road, Crouch End, N8	Detached houses	Positive contributors to the Crouch End Conservation Area
2-26 (even)	New Road, Crouch End, N8	Terraced houses	Positive contributors to the Crouch End Conservation Area
North Bank	North Bank, Pages Lane, Muswell Hill, N10	Now part of the Methodist Church	Positive contributors to the Muswell Hill Conservation Area
10-16 (even)	North Hill, Highgate, N6	Terraced houses	Positive contributors to the Highgate Conservation Area
4	North Hill, Highgate, N6	Former Brewery with underground vaults	Could not locate
76, 76A and 78	North Hill, Highgate, N6		Positive contributors to the Highgate Conservation Area
Wall behind No.13	North Hill, Highgate, N6	Wall behind the Bull Inn	Positive contributors to the Highgate Conservation Area
Highgate School Steps and gates	North Road, Highgate, Steps and memorial gates		Protected by statutory Listing as part of the curtilage of Highgate School Library
101	Northumberland Park, Tottenham, N17	Park Cottage	Does not meet criteria
2-6 (even)	Northumberland Park, Tottenham, N17	Partially demolished	Does not meet criteria
1-23 (odd) and 23A	Orchard Road, Highgate, N6		Positive contributors to the Highgate Conservation Area



Premise number	Street Address	Description	Reason
2-40 (even)	Orchard Road, Highgate, N6		Positive contributors to the Highgate Conservation Area
25-31 (odd)	Orchard Road, Highgate, N6		Positive contributors to the Highgate Conservation Area
1-11 (odd)	Pages Lane, Muswell Hill, N10		Positive contributors to the Muswell Hill Conservation Area
2 and 4	Park Lane, Tottenham, N17		Does not meet criteria
94-102 (even)	Park Lane, Tottenham, N17		Does not meet criteria
26-40 (even)	Park Road, Crouch End, N8		Does not meet criteria
22	Pellatt Grove, N22		Positive contributors to the Trinity Gardens Conservation Area
117-141 (odd)	Philip Lane, Tottenham, N15		Does not meet criteria
128-174 (even)	Philip Lane, Tottenham, N15		Does not meet criteria
159-161	Philip Lane, Tottenham, N15		Does not meet criteria
278	Philip Lane, Tottenham, N15		Does not meet criteria
Tottenham Bus Garage	Philip Lane, Tottenham, N15	Former tram shed section	Does not meet criteria
84-96 (even)	Priory Road, N8		Positive contributors to the Highgate Conservation Area
41-57 (odd)	Queens Avenue, Muswell Hill, N10		Positive contributors to the Muswell Hill Conservation Area
42-58 (even)	Queens Avenue, Muswell Hill, N10		Positive contributors to the Muswell Hill Conservation Area
1-7 (consecutive)	Queen's Mansions, Queens Avenue, Muswell Hill	Including 224-230 (even) Fortis Green Road	Positive contributors to the Muswell Hill Conservation Area
Prince of Wales public house	Scotland Green, Tottenham, N15	See High Road	Duplicate list entry
671 - 677 (odd)	Seven Sister's Road (west side), Tottenham, N15	High street terrace	Does not meet criteria
725	Seven Sisters Road, Tottenham, N15	including 227 High Road	Duplicate list entry
590	Seven Sister's Road, Tottenham, N15	Former weights and measures office	Does not meet criteria
3	Sheldon Avenue, Highgate, N6	Kenwood House	Positive contributor to the Highgate Conservation Area
7	St Ann's Road, Tottenham, N15		Demolished
112	St James's Lane N10	Manor Farm Cottages	Does not meet criteria
3	Stormont Road, Highgate, N6		Positive contributor to the Highgate Conservation Area
17-20 (consecutive)	Stuart Crescent, N22		Positive contributor to the Trinity Gardens Conservation Area
5-11 (odd)	Summerhill Road, Tottenham, N15		Positive contributor to the Clyde Circus Conservation Area
2-40 (even)	Talbot Road, Tottenham, N15		Positive contributor to the Tottenham Green Conservation Area
2-12 (even)	Tetherdown, Muswell Hill, N10		Positive contributors to the Muswell Hill Conservation Area

Premise number	Street Address	Description	Reason
	The grove, Highgate, N6	Parish Marker	Outside of Borough Boundary
5	Tottenham Lane, N8	The Wishing Well - former railway public house	Does not meet criteria due
Rawlinson Terrace	Tottenham, N17 (See High Road)		
	Tower Terrace (N22)	See Mayes Road	Duplicate listing
Prince of Wales public house	Trinity Road, N22	See Finsbury road N22	Duplicate listing
17 and 19	View Road, Highgate, N6	Highgate Private Hospital	Positive contributor to the Highgate Conservation Area
3	View Road, Highgate, N6		Positive contributor to the Highgate Conservation Area
7	View Road, Highgate, N6		Positive contributor to the Highgate Conservation Area
1A and 1B	West Green Road, Tottenham, n15		Does not meet criteria
247 and 247B	West Green Road, Tottenham, N15		Does not meet criteria
268	West Green Road, Tottenham, N15	Black Boy Public House	Does not meet criteria
290 and 292	West Green Road, Tottenham, N15	Former Essoldo Cinema	Does not meet criteria
492	West Green Road, Tottenham, N15	The Green Gate Public House	Does not meet criteria
25 and 27	Western Road, Fortis Green		Positive contributor to the Muswell Hill Conservation Area
6A	White Hart Lane, Tottenham, N17		Positive contributor to the North Tottenham Conservation Area
1	Whittington Road, N22		Does not meet criteria
Haringey Civic Centre	Wood Green High Rd		Now statutory Listed
14	Wood Lane, Highgate, N6		Positive contributor to the Highgate Conservation Area

