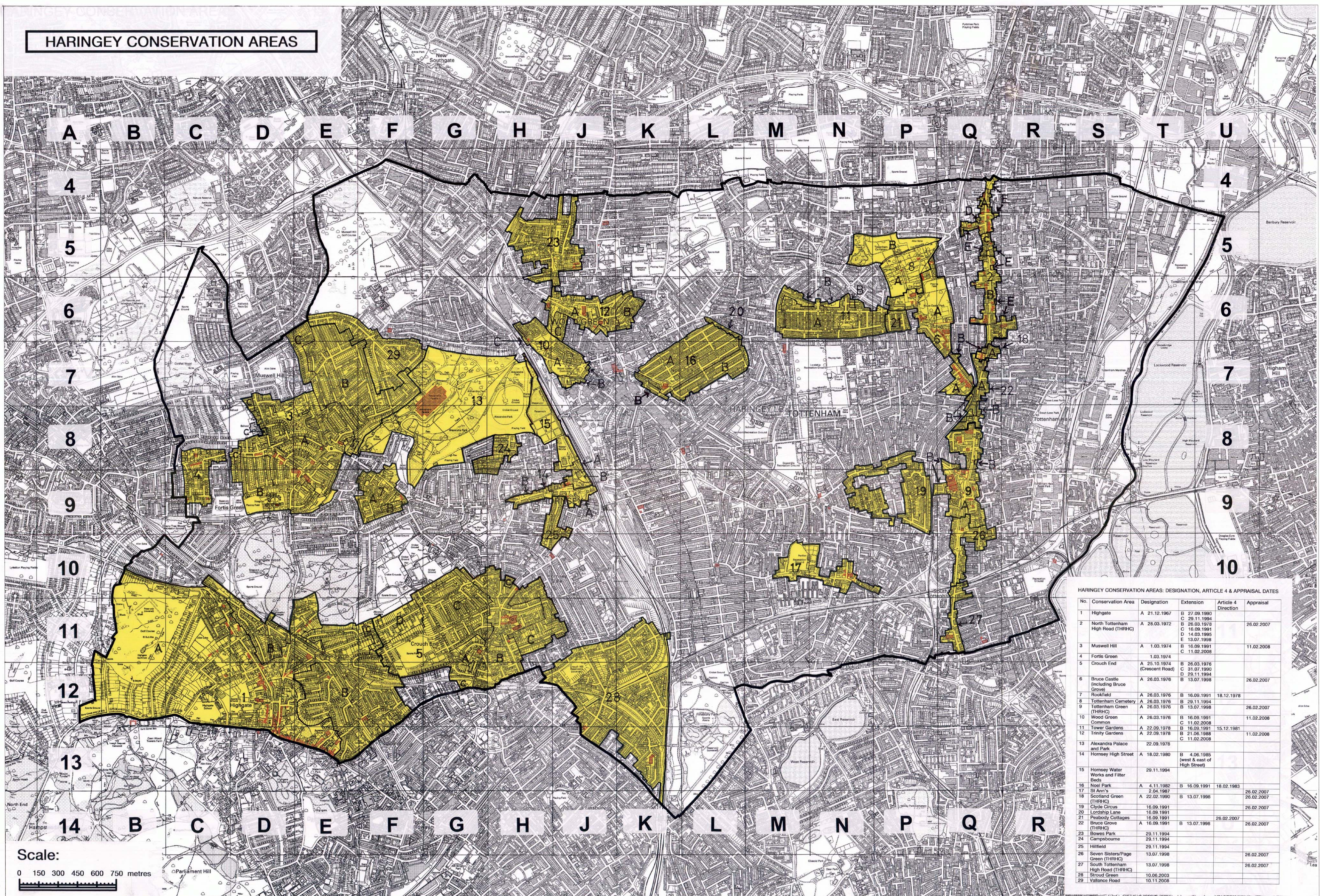


HARINGEY CONSERVATION AREAS



HARINGEY CONSERVATION AREAS: DESIGNATION, ARTICLE 4 & APPRAISAL DATES

No.	Conservation Area	Designation	Extension	Article 4 Direction	Appraisal
1	Highgate	A 21.12.1967	B 27.09.1990 C 29.11.1994		
2	North Tottenham High Road (THRH)	A 28.03.1972	B 26.03.1978 C 16.09.1991 D 14.03.1995 E 13.07.1998		26.02.2007
3	Muswell Hill	A 1.03.1974	B 16.09.1991 C 11.02.2008		11.02.2008
4	Fortis Green	A 1.03.1974			
5	Crouch End	A 25.10.1974 (Crescent Road)	B 26.03.1976 C 31.07.1990 D 29.11.1994 E 13.07.1998		26.02.2007
6	Bruce Castle (including Bruce Grove)	A 28.03.1976			26.02.2007
7	Rookfield	A 26.03.1976	B 16.09.1991	18.12.1978	
8	Tottenham Cemetery	A 28.03.1976	B 29.11.1994		
9	Tottenham Green (THRH)	A 26.03.1976	B 13.07.1998		26.02.2007
10	Wood Green Common	A 26.03.1976	B 16.09.1991 C 11.02.2008		11.02.2008
11	Tower Gardens	A 22.09.1978	B 16.09.1991	15.12.1981	
12	Trinity Gardens	A 22.09.1978	B 21.06.1988 C 11.02.2008		11.02.2008
13	Alexandra Palace and Park	22.09.1978			
14	Hornsey High Street	A 18.02.1980	B 4.06.1985 (west & east of High Street)		
15	Hornsey Water Works and Filter Beds	29.11.1994			
16	Noel Park	A 4.11.1982	B 16.09.1991	18.02.1983	
17	St Ann's	2.04.1987			26.02.2007
18	Scotland Green (THRH)	A 22.02.1990	B 13.07.1998		26.02.2007
19	Clyde Circus	16.09.1991			26.02.2007
20	Lordship Lane	16.09.1991			26.02.2007
21	Peabody Cottages	16.09.1991			26.02.2007
22	Bruce Grove (THRH)	A 16.09.1991	B 13.07.1998		26.02.2007
23	Bowes Park	29.11.1994			
24	Campbourne	29.11.1994			
25	Hillfield	29.11.1994			
26	Seven Sisters/Page Green (THRH)	13.07.1998			26.02.2007
27	South Tottenham High Road (THRH)	13.07.1998			26.02.2007
28	Stroud Green	10.06.2003			
29	Vallance Road	10.11.2008			

Scale:
0 150 300 450 600 750 metres

THE GRID SYSTEM ON THIS MAP CAN BE CROSS REFERENCED TO THE HARINGEY BOROUGH STREET INDEX.
This map is reproduced from Ordnance Survey material with the permission of the Ordnance Survey on behalf of the Controller of Her Majesty's Stationery Office © Crown copyright. L B Haringey LA100019199 (2009) Unauthorised reproduction infringes Crown copyright and may lead to prosecution or civil proceedings.